

**SEW
NEWS**
The Trusted Sewing Source

**GRAND LAKE
DUFFLE BAG**
BY KATRIN VORBECK
SAMPLE BY AMANDA CARESTIO



sewdaily.com

© 2020 Peak Media Properties, LLC.

GRAND LAKE DUFFLE BAG

BY KATRIN VORBECK, SAMPLE BY AMANDA CARESTIO

This elegant weekender bag is a fantastic companion. Small enough to take everywhere, it is also large enough to carry all your weekend necessities. The long zipper opens up wide for easy packing and unpacking. An exterior pocket gives you quick access to your reading materials. Add more pockets or dividers inside or out—this bag is easily customized!

RECOMMENDED FABRICS

Home Decor weight exterior fabric

SUPPLIES

2½ yards of 45"-wide or 2 yards of 60"-wide exterior fabric, preferably home décor weight
2 yards of 45"-wide or 1½ yd of 60"-wide quilting-weight cotton
1⅞ yard of 45"-wide Decovil I or heavyweight fusible interfacing (See "Sources.")
1⅞ yard of 45"-wide lightweight nonwoven fusible interfacing
36" zipper
2 yards of contrasting piping
All-purpose thread
Removable fabric marker



NOTES

- Supplies listed are enough to make one 22"x13"x8" bag.
- Use 5/8" seam allowances unless otherwise noted

INSTRUCTIONS

1. Download, print and tile the pattern. Cut out the pattern pieces.
2. From the exterior fabric, cut two main pieces, two pockets (folding on the designated pocket line), one bottom on the fold, two closures on the fold, four lower sides and two 5¼"x52" strips for the handles.
3. From the lining fabric, cut two main pieces, two pockets (folding on the designated pocket line), one bottom on the fold, two closures on the fold and two lower sides.



4. From the heavyweight interfacing, cut two main pieces, one bottom on the fold, and two lower sides, removing the $\frac{5}{8}$ " seam allowances from all edges to reduce bulk.
5. From the lightweight interfacing, cut two main pieces, two pockets (folding on the designated pocket line), one bottom on the fold and two closures on the fold.
6. Fuse the interfacing to the corresponding pattern pieces, following the manufacturer's instructions and centering the heavyweight interfacing on the exterior fabric.
7. Transfer all pattern markings.
8. Use $\frac{5}{8}$ " seam allowances unless otherwise noted.
9. With right sides together, fold the handle strips in half lengthwise and sew the long side with a $\frac{1}{2}$ " seam allowance. Press the seam allowances open. Turn handles right side out so the seam is centered on the back. Press.
10. From each end of the handle, measure and mark 12" toward the center. Fold the handle in half lengthwise, enclosing the seamline. Topstitch $\frac{1}{8}$ " along the edge in the center of the handle only between the markings. The ends of the handle will remain flat.
11. Pin or baste the handles to the exterior main pieces, aligning the lower bag edges with the raw handle edges and aligning the inside edge of the handles with the template markings. Sew the handles to the bag, beginning and ending at the lower raw

edge and stitching an X at the 12" mark.

12. With raw edges aligned, baste piping to the upper edge of the exterior pockets. With right sides together, lay the pocket lining on top of the exterior pocket and stitch, catching the piping. Turn right side out and press. Topstitch $\frac{1}{8}$ " from the piped seam.
13. Baste the exterior pockets to the right sides of the bag body, aligning raw edges. Stitch a vertical line down the center of one pocket to divide it into two sections. Set the main body pieces aside.
14. Align and baste the zipper tape to the raw edge of one closure with the right side of the zipper facing the right side of the fabric. Use a zipper foot to sew the zipper to the closure piece. Repeat with the other closure piece.
15. Press the closure pieces away

from the zipper teeth. Topstitch. Trim the zipper ends, if necessary.

16. With right sides together, sew the interfaced lower side pieces to both ends of closure/zipper strip. Trim the seam allowances of the side pieces to reduce bulk and press the seams toward the lower sides. Topstitch.
17. To create the lower side pocket, baste piping to the long edge of one of the non-interfaced lower side pieces. With right sides together, lay the second non-interfaced lower side piece on top. Stitch, enclosing the piping in the seam. Turn and press. Topstitch.
18. Baste the lower side pocket to the side/closure piece, aligning the raw edges.
19. Sew each short end of the bottom to the side/closure piece. Press the seam allowances towards the bottom. Topstitch.

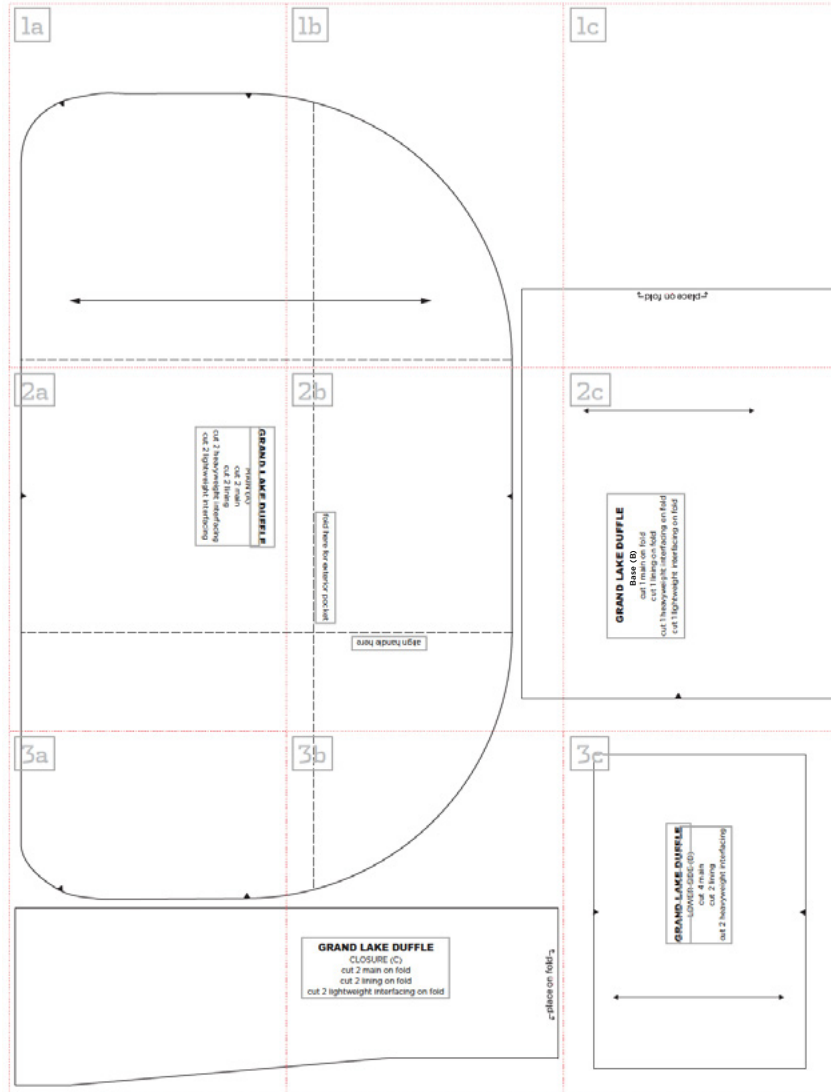


20. With right sides together, baste one of the main body pieces to the completed bottom/side/closure part, aligning notches. Stitch. Clip curved seam allowances. Open the zipper and repeat this step with the second main body piece to finish the exterior bag. Turn the bag right side out through zipper. Press.
21. On each lining closure piece, press $\frac{5}{8}$ " under on the long straight edge.
22. With right sides together, sew the lining closure pieces to the lining lower sides. The pressed seam allowances from the previous step should meet in the center. Press seam allowances towards lower sides; topstitch.
23. With right sides together, sew the lining bottom to the lining closure/ lower sides. Press the seam allowances towards the lining bottom; topstitch.
24. If desired, add pockets to the lining main body.
25. Pin one of the lining main body pieces to the lining closure/side/ bottom, aligning notches. Stitch. Repeat with the other main body piece. Clip the curved seam allowances. Turn the lining right side out and press.
26. Turn the lining wrong side out again and place it into the exterior bag, wrong sides facing.
27. Sew the lining to the exterior bag on both sides of the zipper by hand, or baste the lining in place and repeat the topstitching along the zipper on the exterior bag. **S**

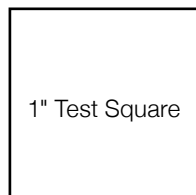


SOURCE
Cloud 9 Fabrics provided the Cactus and Foxes Canvas Duck fabric: cloud9fabrics.com.

GRAND LAKE DUFFLE



Template overview

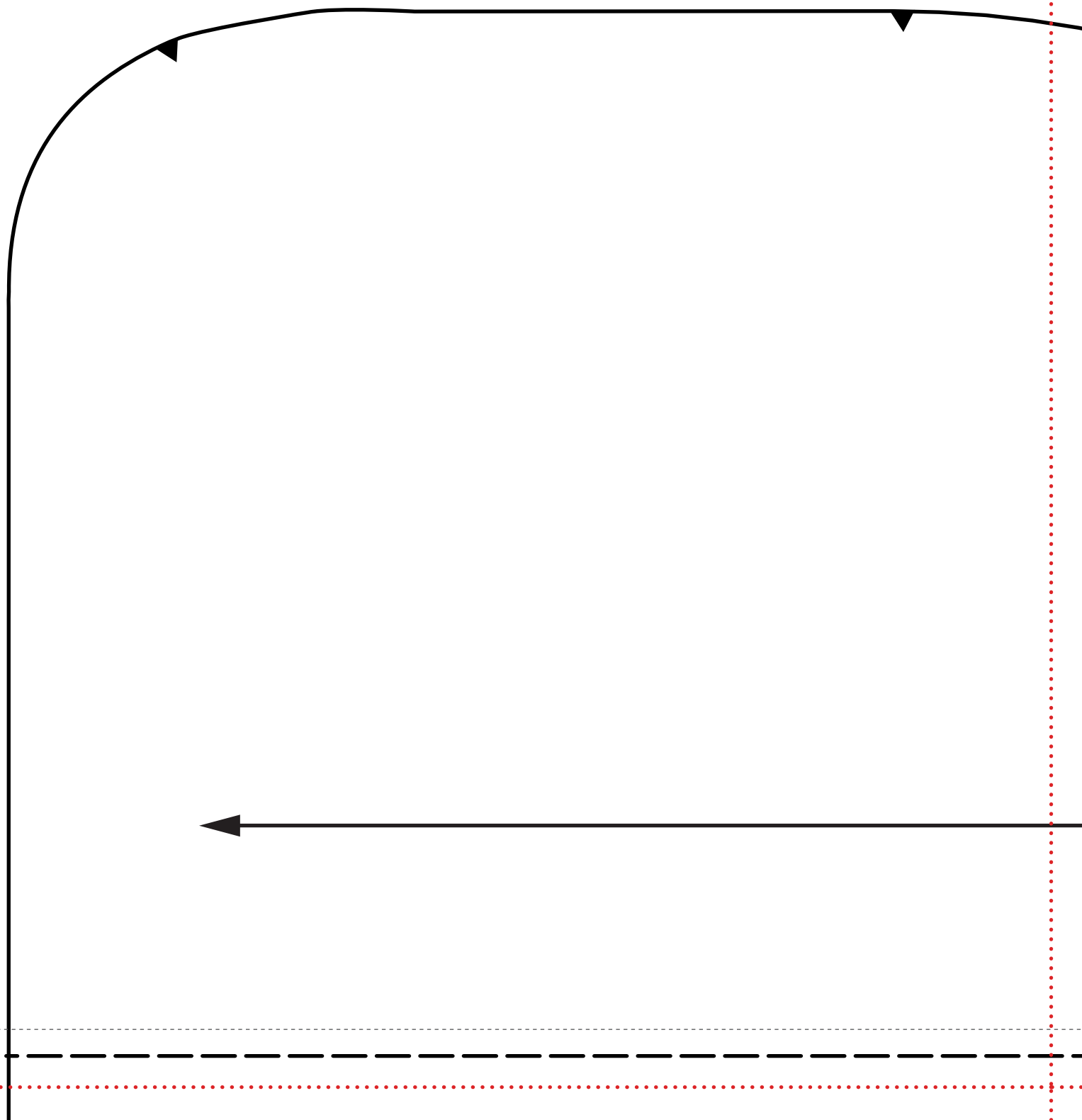


1" Test Square

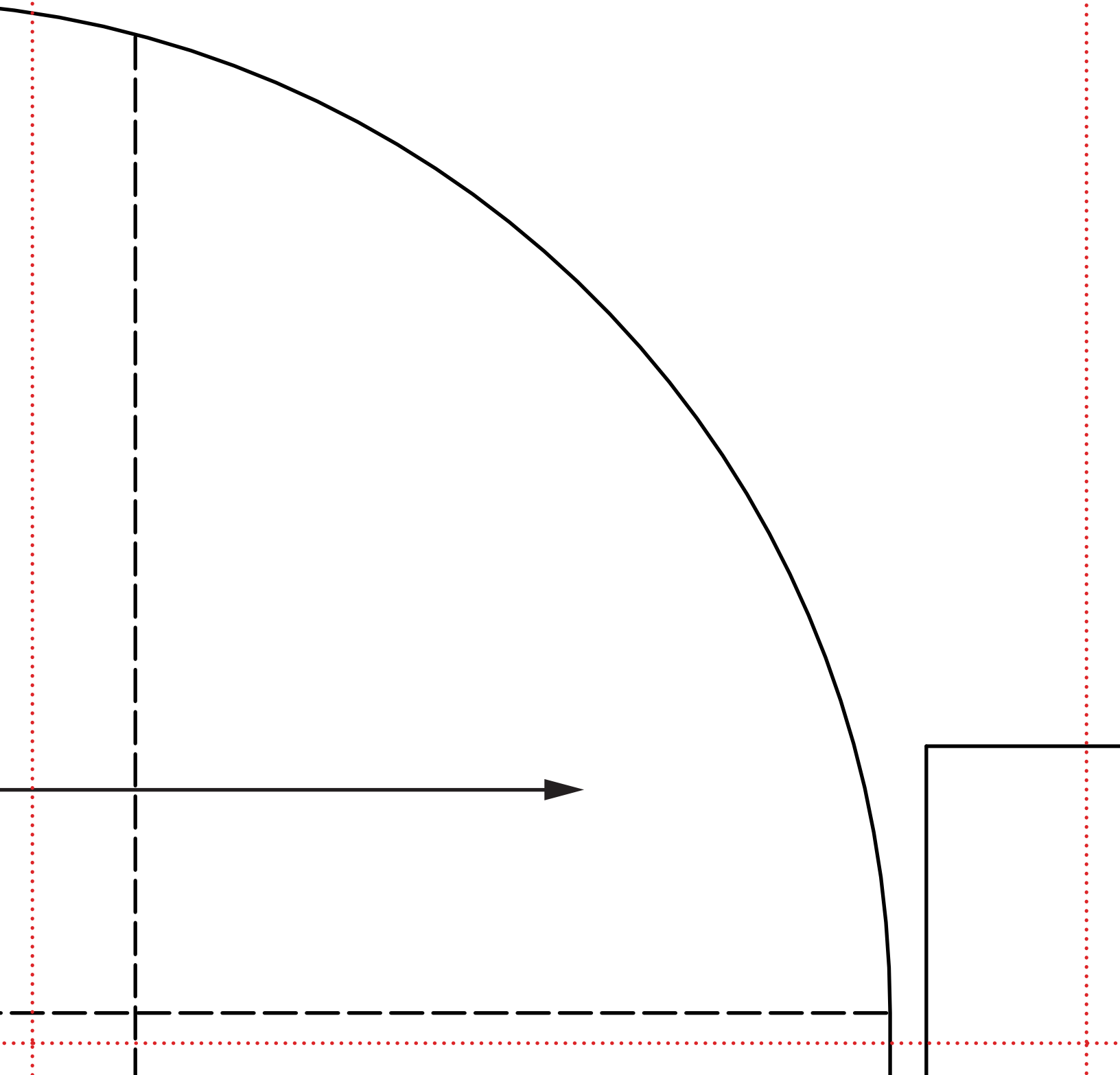
9 pages: 1a–3c

Print this page first at 100%, then measure the 1" test square before printing full pattern.

1a



1b



1c

↑ place on fold ↑

GRAND LAKE DUFFLE

MAIN (A)

cut 2 main

cut 2 lining

cut 2 heavyweight interfacing cut

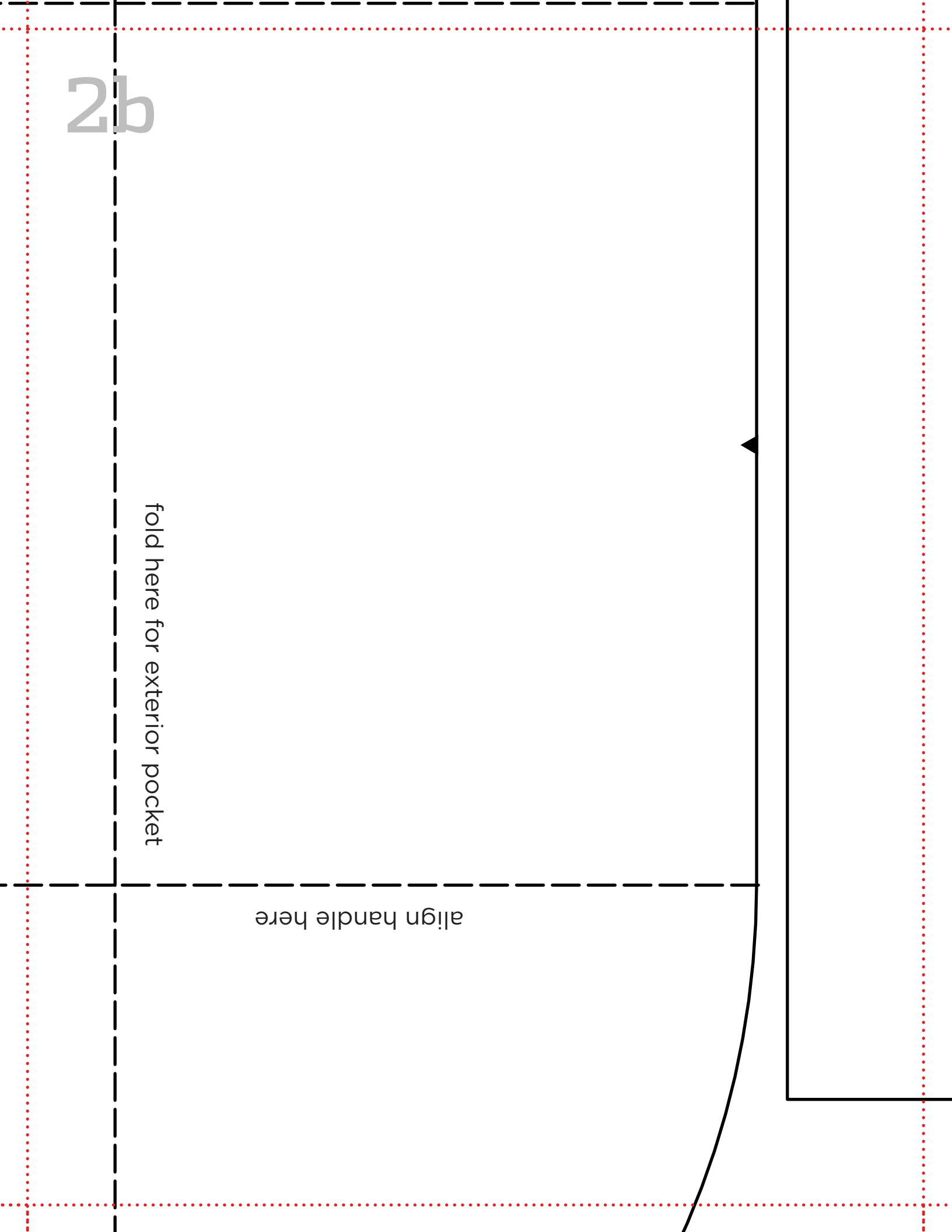
2 lightweight interfacing

2a

2b

fold here for exterior pocket

align handle here



2c



GRAND LAKE DUFFLE

Base (B)

cut 1 main on fold

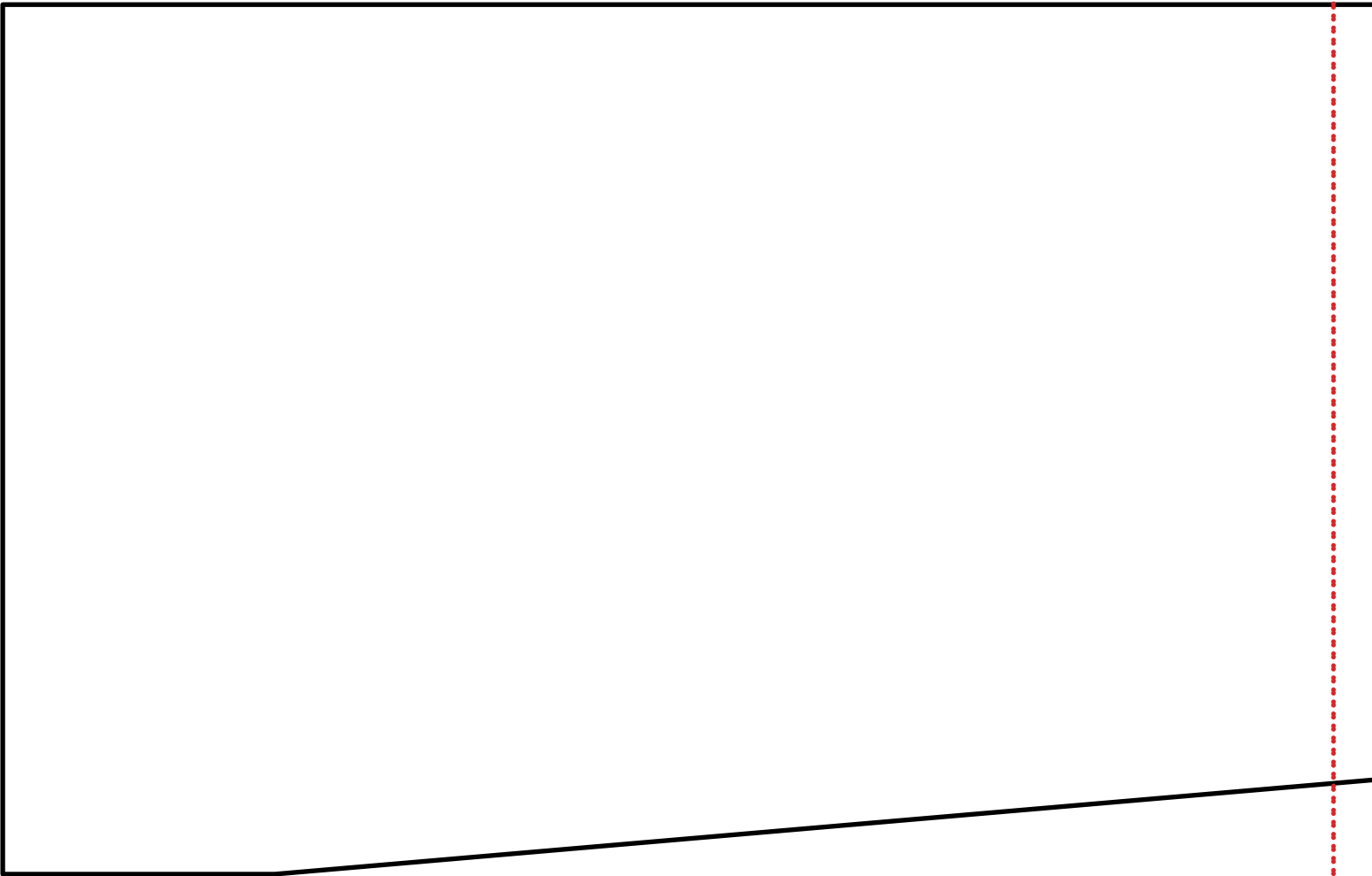
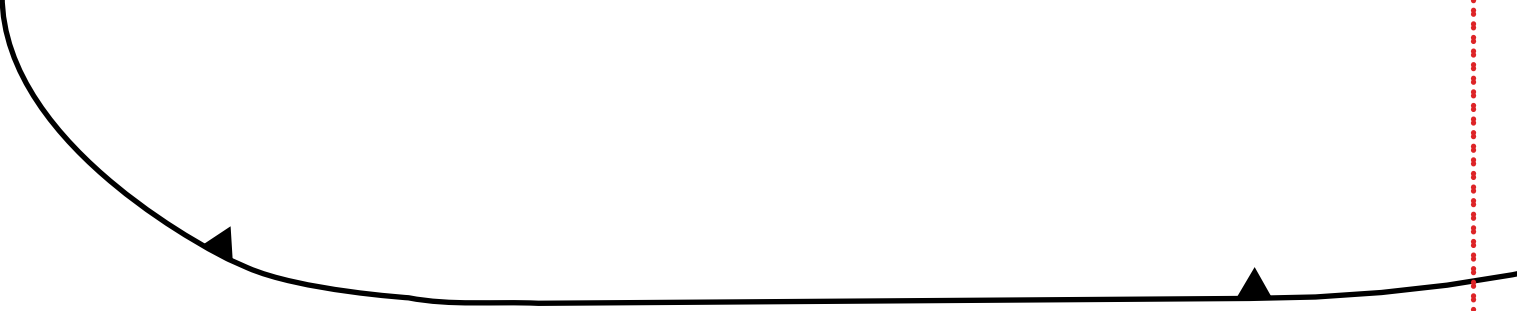
cut 1 lining on fold

cut 1 heavyweight interfacing on fold

cut 1 lightweight interfacing on fold



3a



3b

GRAND LAKE DUFFLE

CLOSURE (C)

cut 2 main on fold

cut 2 lining on fold

cut 2 lightweight interfacing on fold

↵ place on fold ↵

3c

GRAND LAKE DUFFLE

LOWER SIDE (D)

cut 4 main

cut 2 lining

cut 2 heavyweight interfacing

