

pattern insert

PATTERNS + TEMPLATES

FALL 2010
PAGE 1 OF 28



1 **plaid curves table runner** by KEVIN KOSBAB Project photo on p. 56; instructions on p. 110.



2 **butterfly mittens** by ERIN GILDAY Project photo on p. 73; instructions on p. 135.



3 **not-so-big-backpack** by MELISSA FRANTZ Project photo on p. 47; instructions on p. 98.



4 **sashiko furoshiki wrapping cloth** by CAROL ZIOGAS Project photo on p. 69; instructions on p. 127.



5 **neapolitan wrap** by REBEKA LAMBERT Project photo on p. 75; instructions on p. 138.



6 **recycled denim wine tote** by LISA COX Project photo on p. 46; instructions on p. 97.



7 **weekend travel ensemble** by CAROL ZENTGRAF Project photo on p. 43; instructions on p. 91.



8 **moment clock** by LINDA GRAHAM Project photo on p. 71; instructions on p. 130.



9 **nesting baskets** by AYUMI TAKAHASHI Project photo on p. 72; instructions on p. 132.



10 **take-it-to-go lunch bag** by MELISSA FRANTZ Project photo on p. 67; instructions on p. 125.



11 **quirky birdies** by EVA HANUSOVA Project photo on p. 70; instructions on p. 128.



12 **shadow appliqué dandelion pillow** by ANGELA FLOWERS Project photo on p. 68; instructions on p. 126.



13 **moroccan medallion dog bed** by KEVIN KOSBAB Project photo on p. 51; instructions on p. 104.

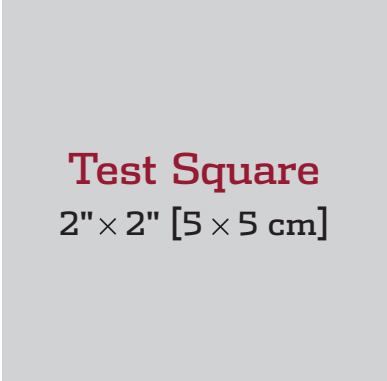
pattern guide

GETTING STARTED

Basic techniques and terms you'll need to know for the pattern you have downloaded.

ASSEMBLING FULL-SIZE PATTERN PRINTOUT

1 | When preparing to print the PDF, make sure that you are printing it at 100% and that there is no scaling. Check the settings for page scaling (should be "None") and check the preview to make sure that you will be printing at full size. Make sure that the box labeled "Auto-Rotate and Center" is unchecked (instructions apply specifically to Adobe Reader; if using another PDF reader, check for similar settings).



2 | To ensure that the pattern has printed at the correct scale, check the size of the TEST SQUARE. The Test Square should be 2" x 2" (5 x 5 cm).

3 | To begin assembling the pattern, cut off or fold the dotted margin around each page.

4 | The pages are numbered in rows, so the first row of pages is numbered 1a, 1b, 1c, etc. Line up the rows and match the dotted lines together so they overlap. Tape the pages together. Use the illustrated guide to match each piece. Once the pattern is complete, find your size, pin the pattern to the fabric, and follow the coordinating line to cut out or trace the pattern.

LAYOUT, MARKING & CUTTING GUIDELINES

1 | Find the lines that correspond to your size and trace the pattern pieces, either on tissue paper or directly onto the fabric, using tracing paper and a tracing wheel.

2 | If you are cutting pattern pieces on the fold or cutting two of the same pattern piece, fold the fabric in half, selvedge to selvedge, with right sides together. Note that this technique is not appropriate for some fabrics, so check the project instructions if you are unsure.

3 | Lay the pattern pieces on the fabric as close together as possible. Double-check that all pattern pieces to be cut "on the fold" are placed on the fold.

4 | Make sure all pattern pieces are placed on the fabric with the grainline running parallel to the lengthwise grain unless a crosswise or bias grainline is present.

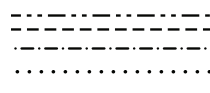
5 | Copy all pattern markings onto the wrong side of the fabric unless otherwise noted.

6 | Read through all cutting instructions listed in the project instructions for directions on how many pattern pieces to cut out of your fabric and interfacing.

7 | Use weights to hold the pattern pieces down and use pins to secure the corners as needed.

8 | Cut the pieces slowly and carefully.

PATTERN SYMBOLS & MARKINGS



↔ place on fold ↔

CUTTING LINES Multisize patterns have different cutting lines for each size.

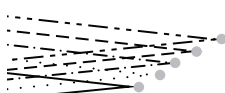
PLACE ON FOLD BRACKET This is a grainline marking with arrows pointing to the edge of the pattern. Place on the fold of the fabric so that your finished piece will be twice the size of the pattern piece, without adding a seam.



GRAINLINE The double-ended arrow should be parallel to the lengthwise grain or fold unless specifically marked as crosswise. Bias grainlines will be diagonal.



NOTCHES Notches are triangle-shaped symbols used for accurately matching seams. Pieces to be joined will have corresponding notches.



DARTS Dashed lines and dots mark darts. The dashed lines show where the stitching will be, and the dot shows the position of the dart point (signaling the point, at the end of the dart, where your stitching should end).



PATTERN DOTS Filled circles indicate that a mark needs to be made (often on the right side of the fabric) for placement of elements such as a pocket or a dart point. Mark by punching through the pattern paper only, then mark on the fabric through the hole.



SLASH MARKS A dashed line (sometimes appearing with pattern dots) indicates an area to be slashed. Further instructions for making the slash will be included in the pattern instructions.

1a *stitch* patterns
P10 pattern insert

1b

1c

1d

1e

2a

2b

2c

2d

2e

3a

3b

3c

3d

3e

4a

4b

4c

4d

4e

5a

5b

5c

5d

5e

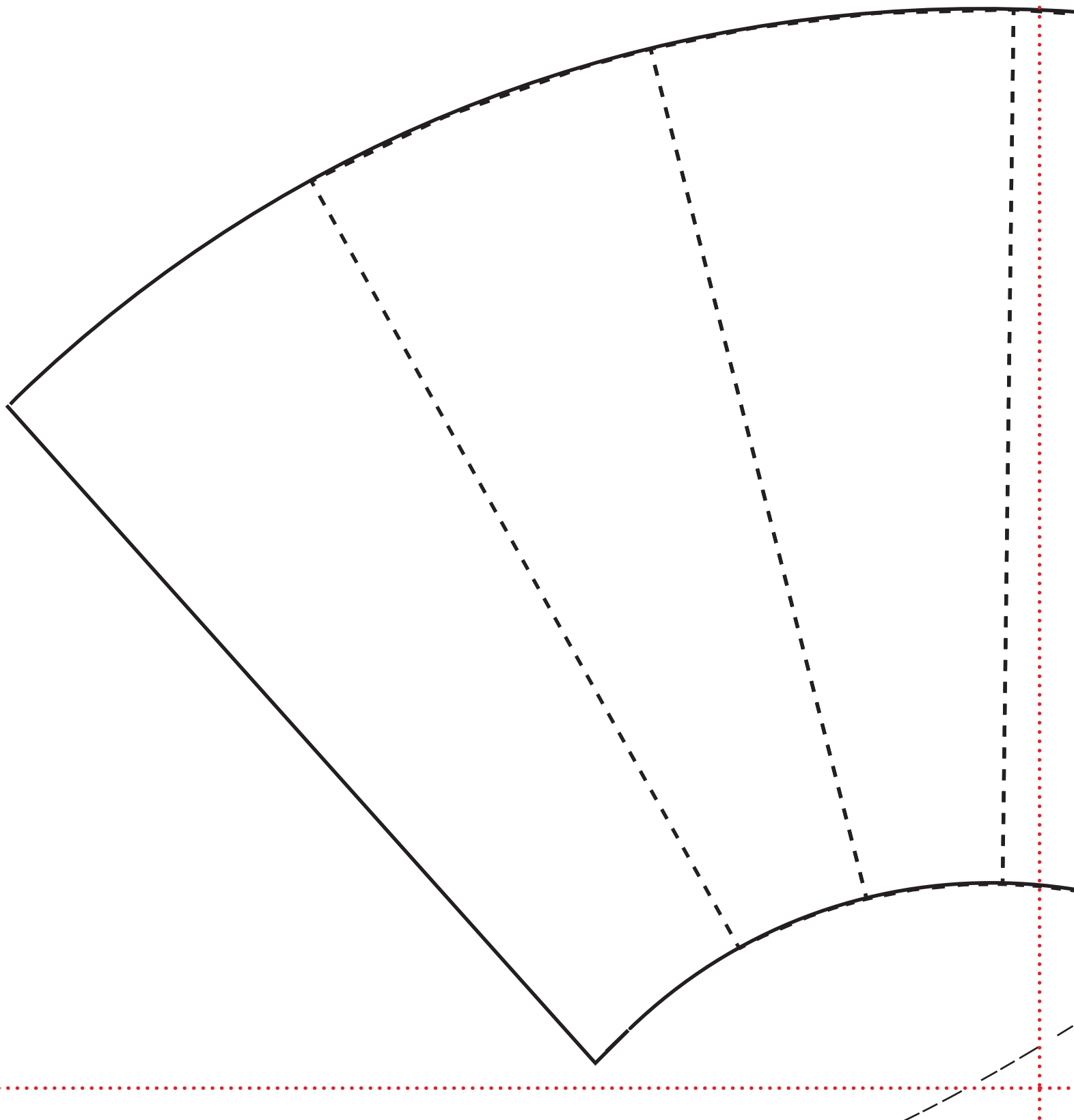
BELLES
MOYEVES
GRAUDES

1a

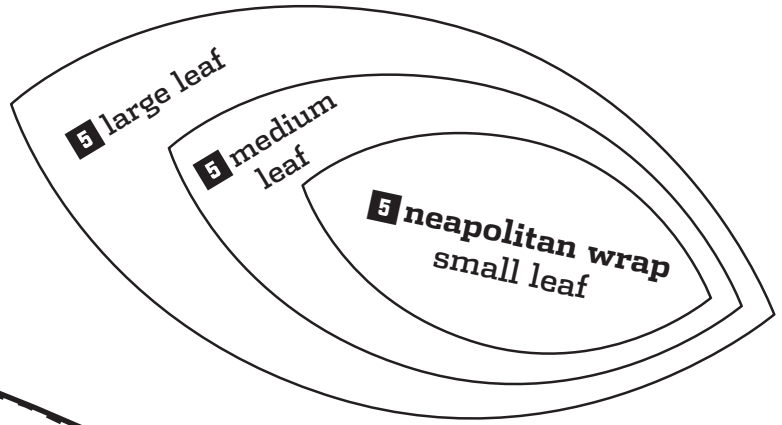
stitch*

F10 pattern insert

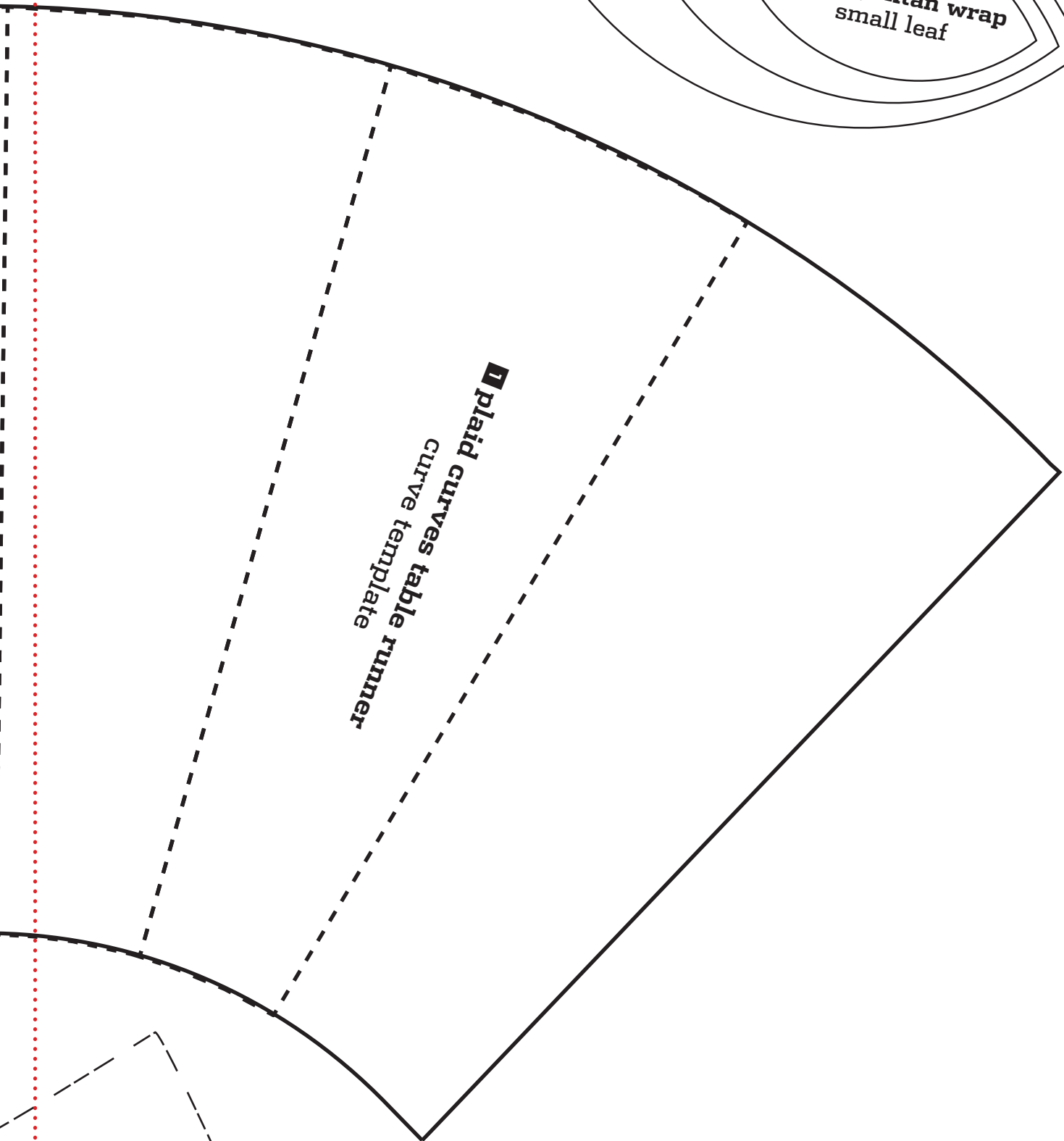
patterns



1b

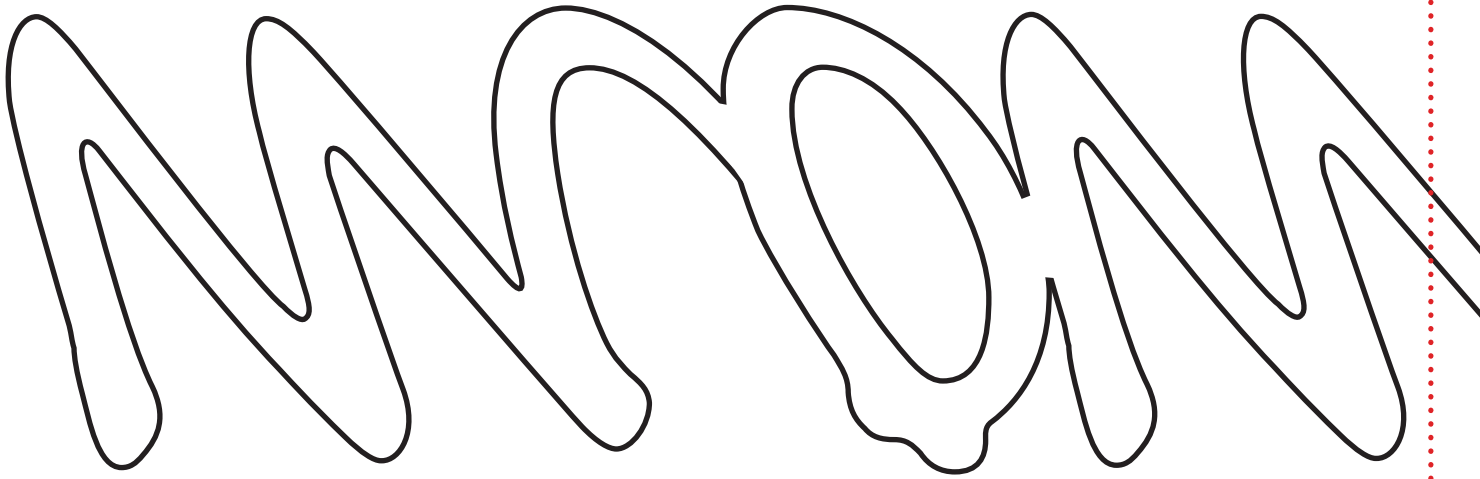


1 plaid curves table runner
curve template



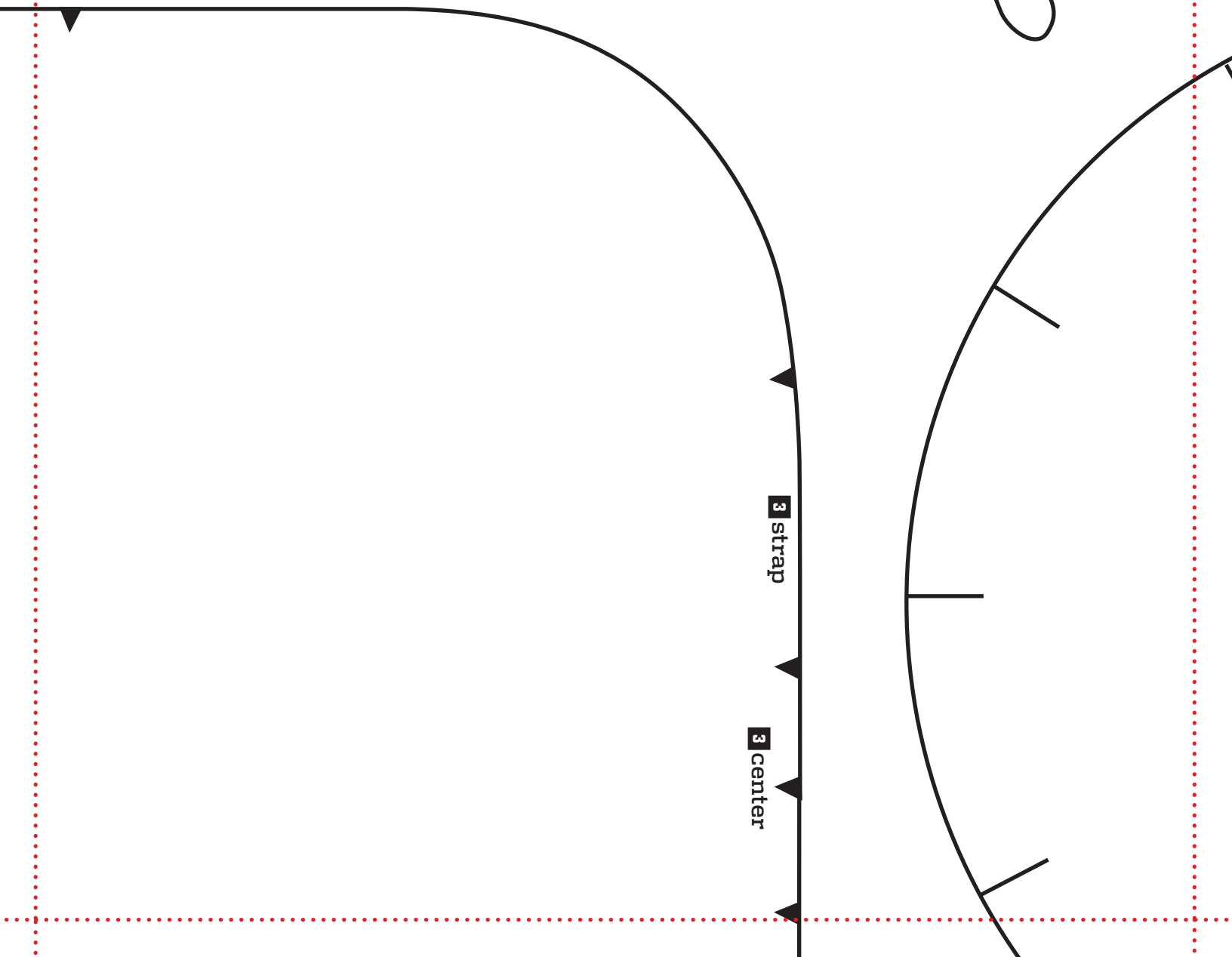
1c

⑧ moment in time
fabric clock
lettering



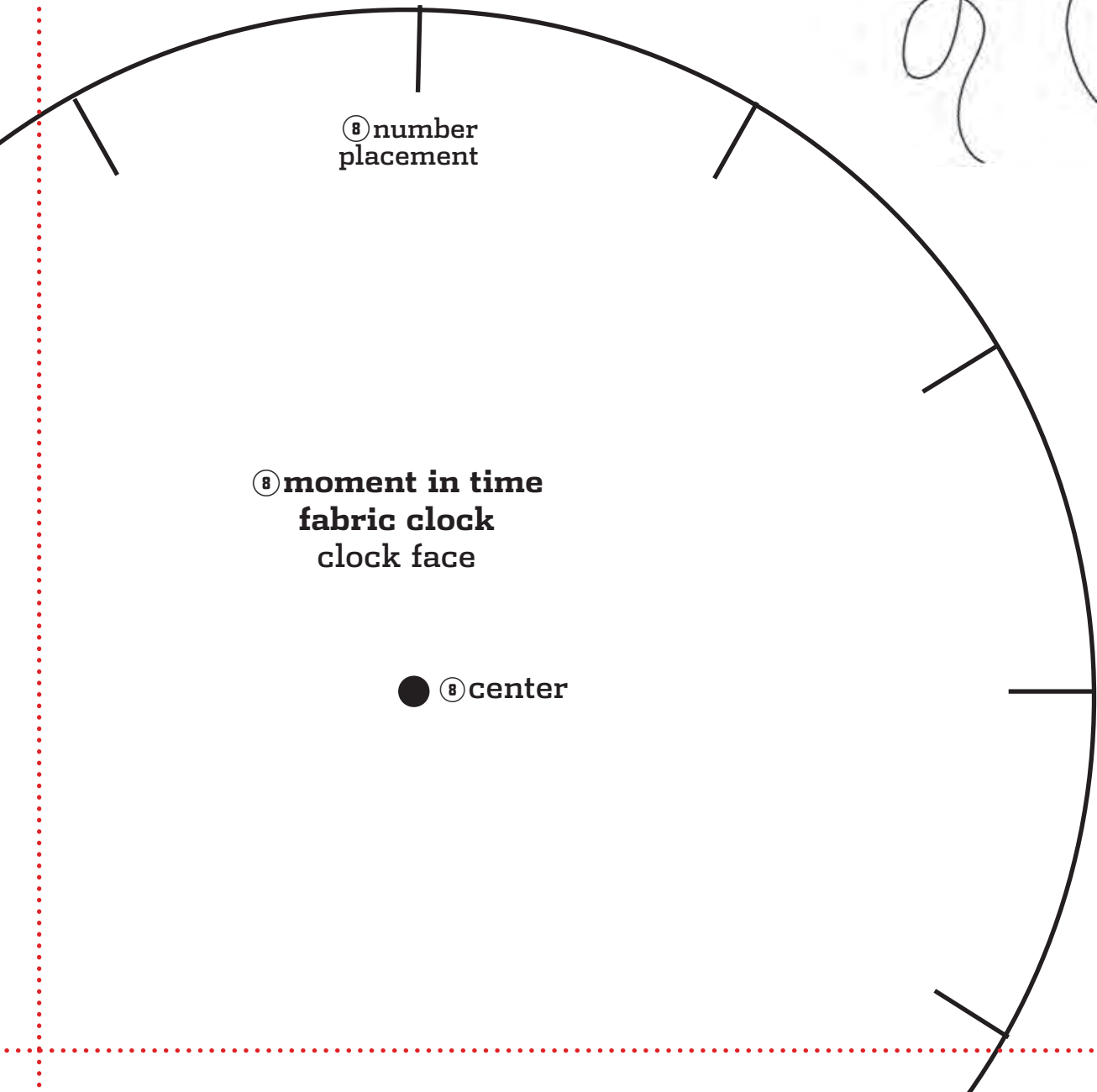
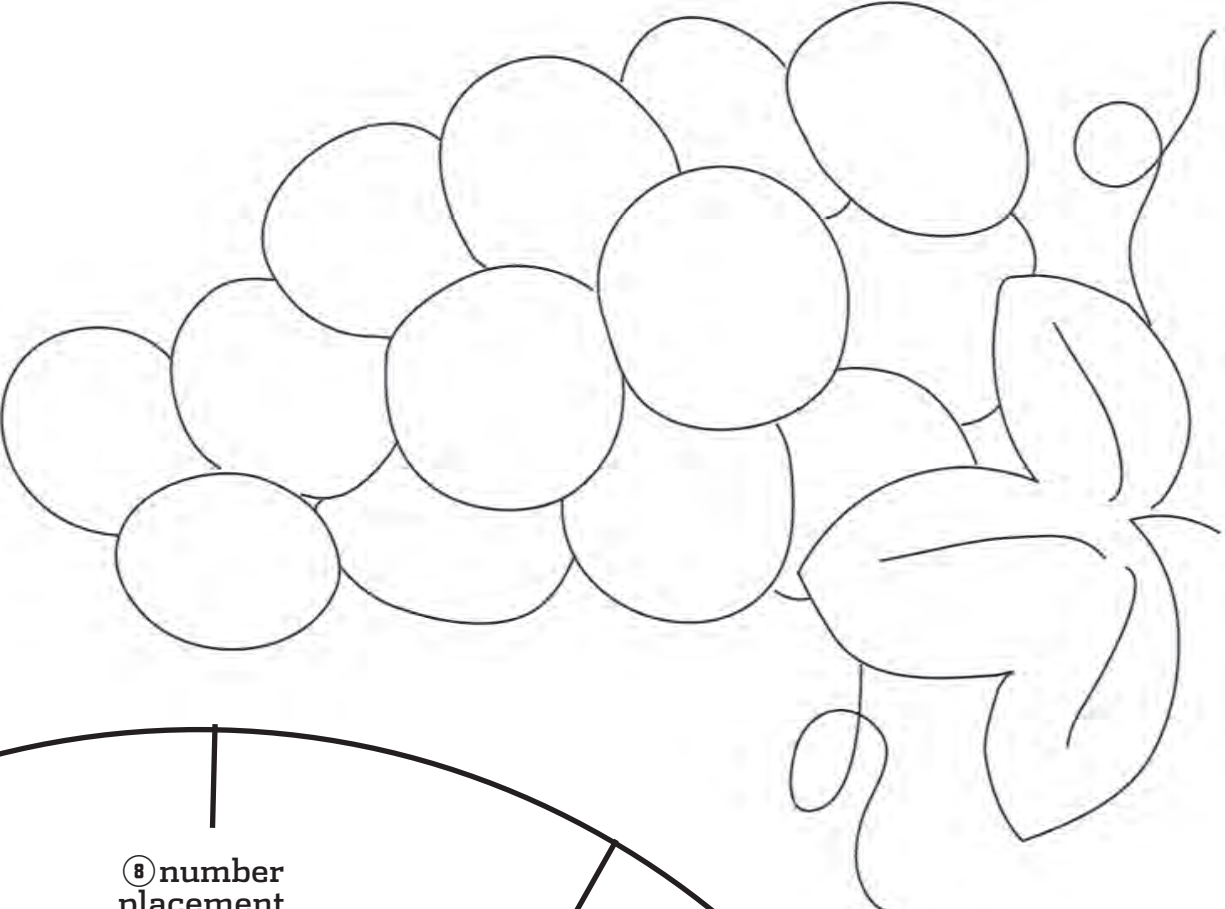
3 webbing

1d



le

8 recycled denim
wine tote
embroidery template

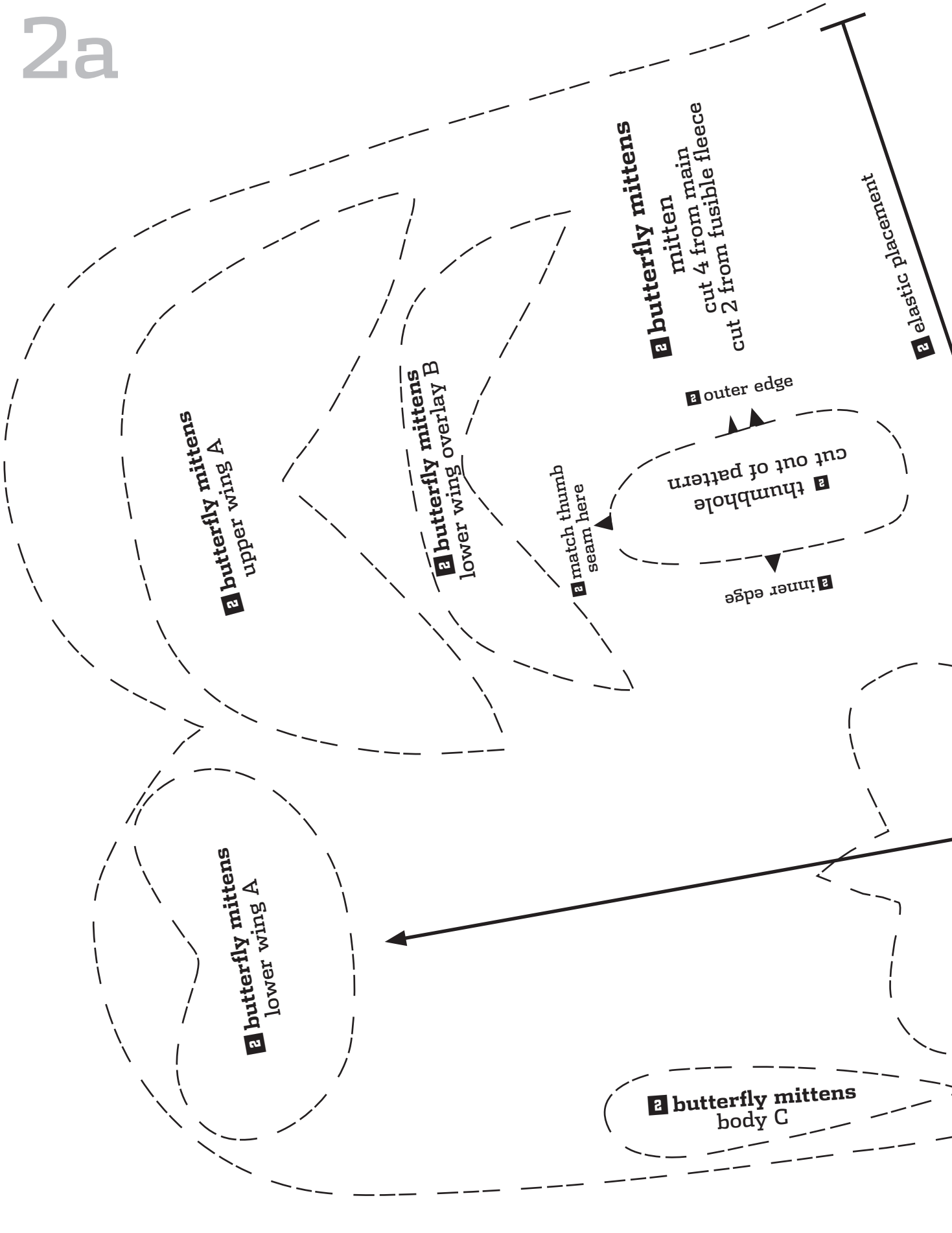


8 number
placement

8 moment in time
fabric clock
clock face

● **8** center

2a



2b

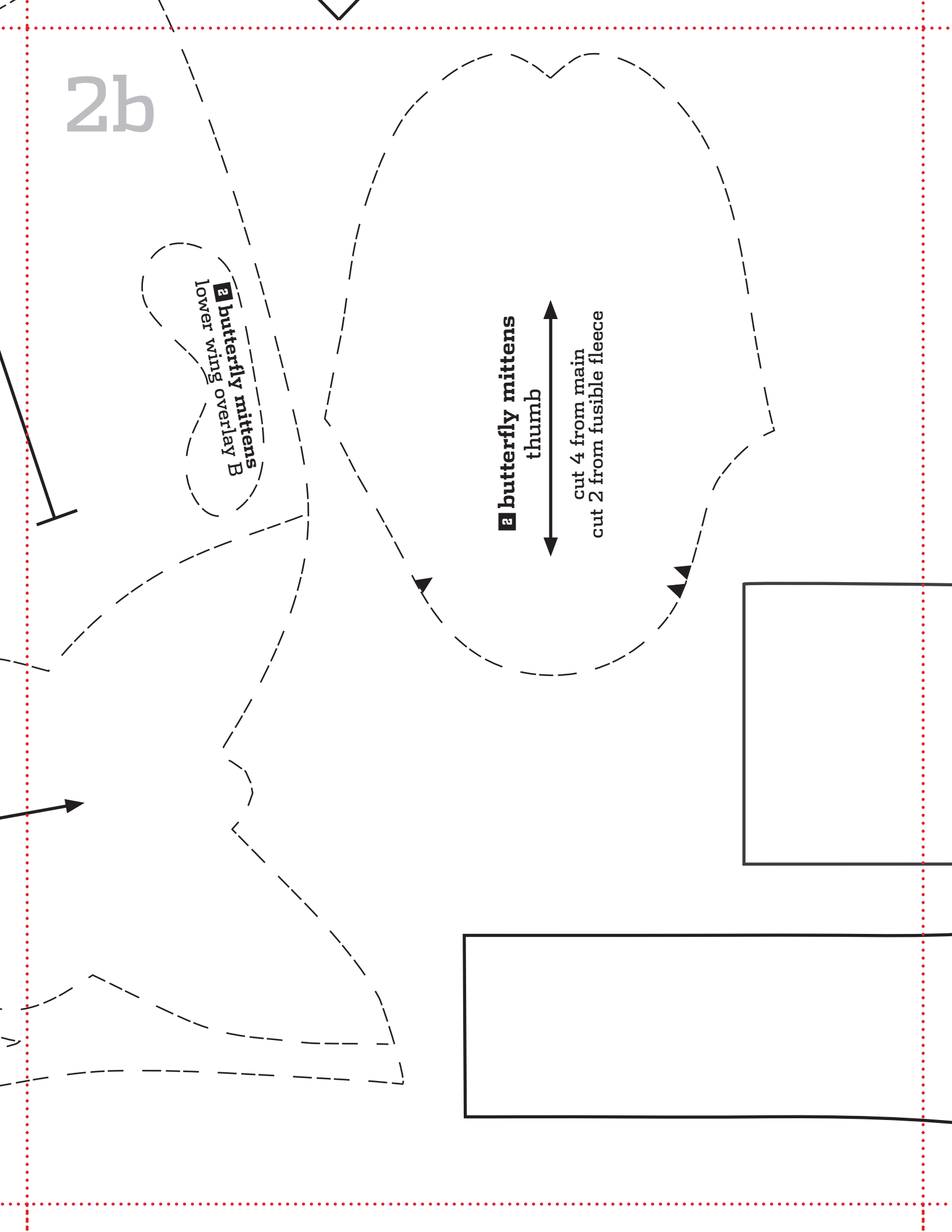
B butterfly mittens
lower wing overlay

A butterfly mittens

thumb

cut 4 from main

cut 2 from fusible fleece



2

3 webbing



3 not-so-big
backpack
zipper gusset
cut 2 from main

3 stitch line
for D rings



2d

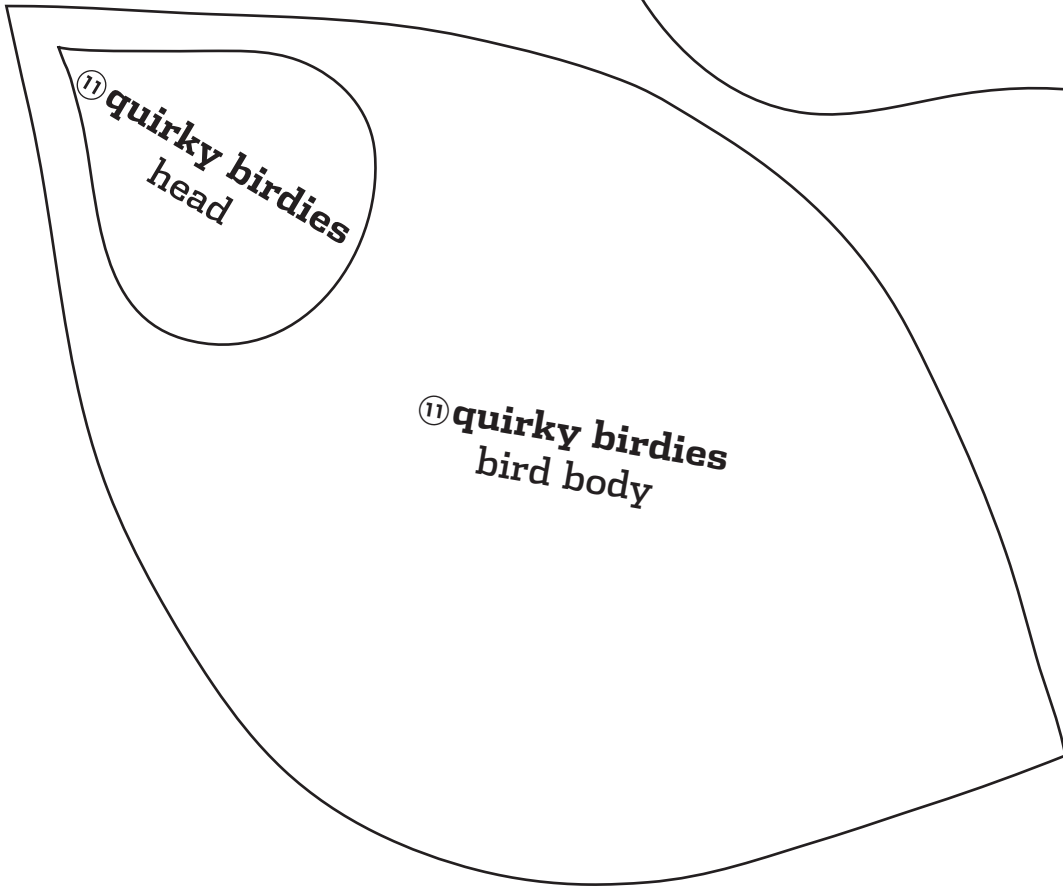
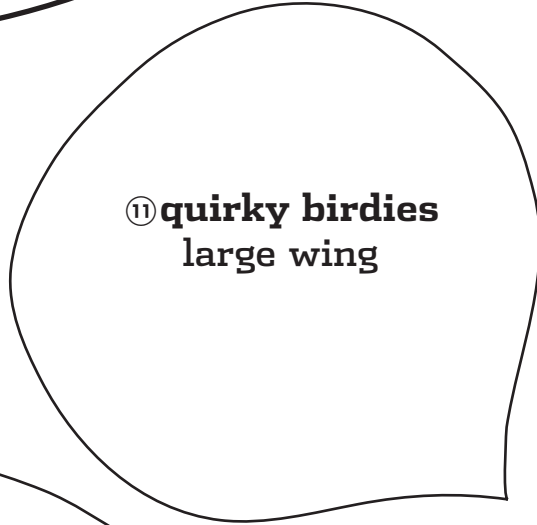
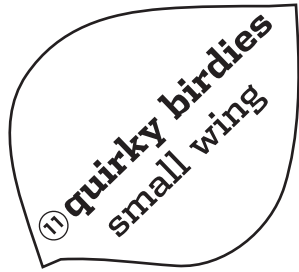
3 strap

3 not-so-big
backpack
backpack body
cut 2 from main
3/8" (1 cm) seam allowance

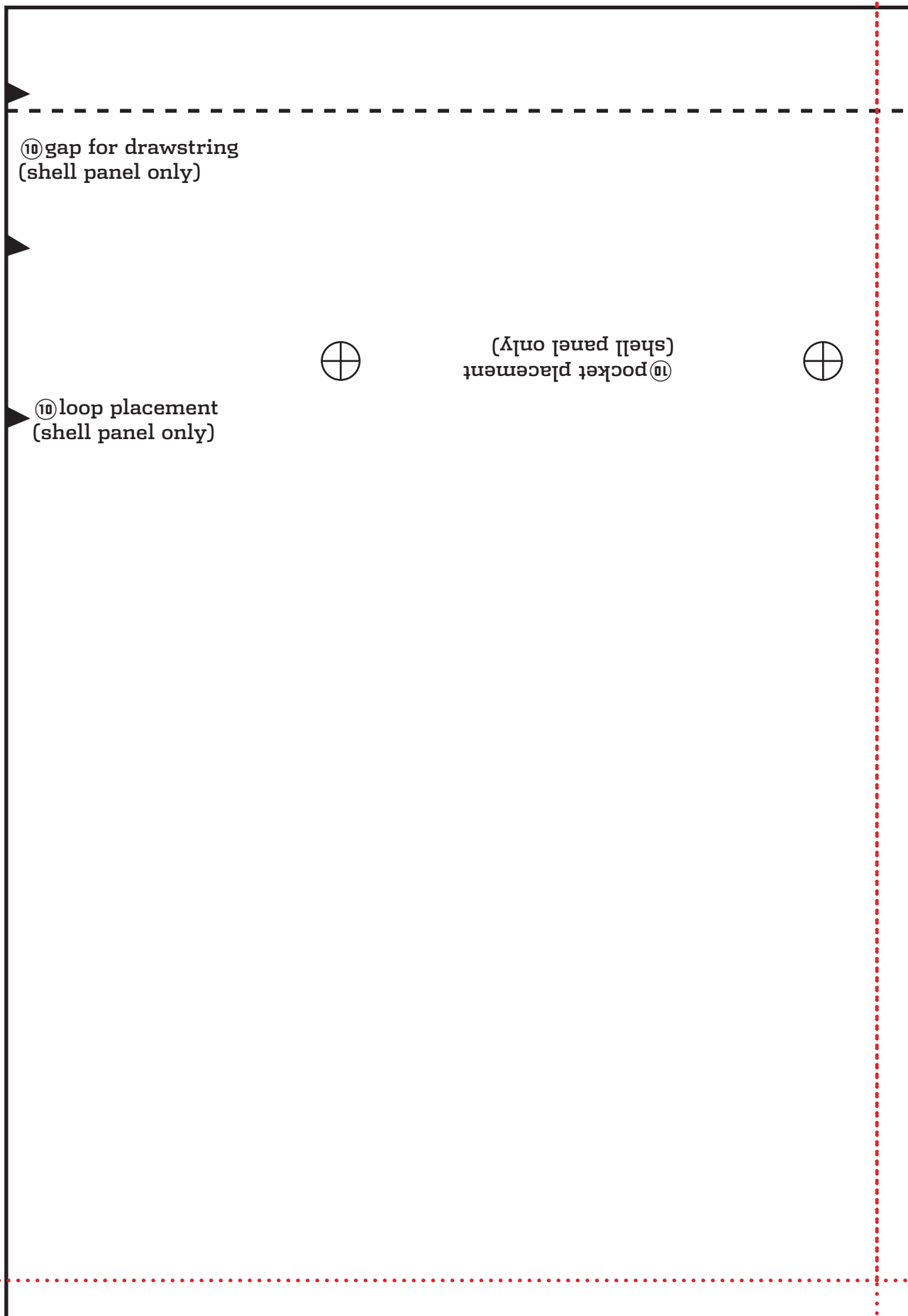
3 zipper edge: 1/4" (6mm) seam allowance this edge

3 not-so-big
backpack
backpack strap
cut 4 from contrast
cut 2 from batting
1/4" (6mm) seam allowance

2e



3a



3b

⑩ cut line for shell panel

⑩ cut line for lining panel and optional interlining

take-it-to-go lunch bag

shell panel: cut 1 from main

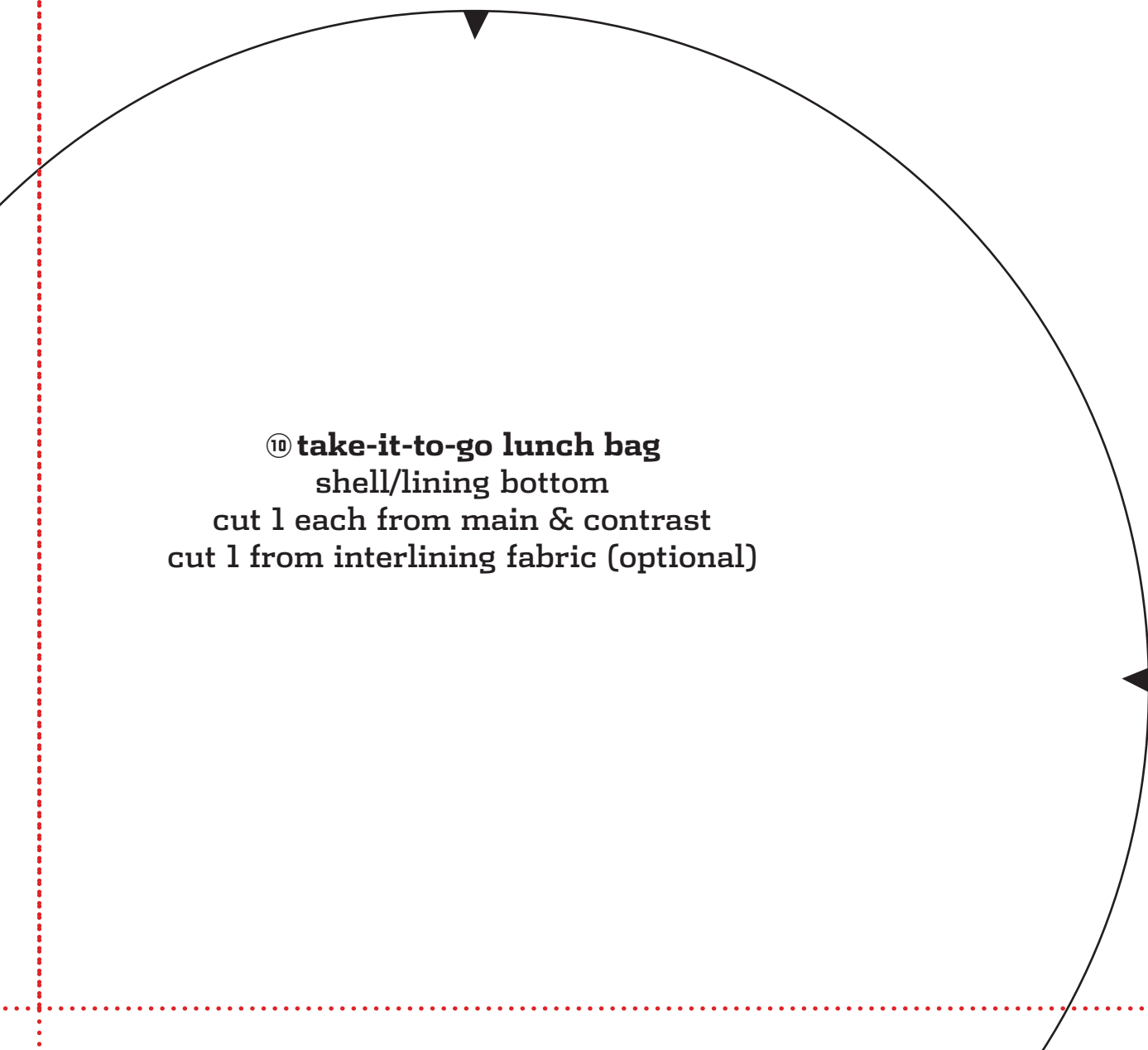
⑩ lining panel: cut 1 from contrast

optional interlining: cut 1 lining panel from interlining fabric



3c

g



⑩ **take-it-to-go lunch bag**
shell/lining bottom
cut 1 each from main & contrast
cut 1 from interlining fabric (optional)

3d

7 weekend travel ensemble
duffel bag: end panel
cut 2 each from A, B, & fusible batting



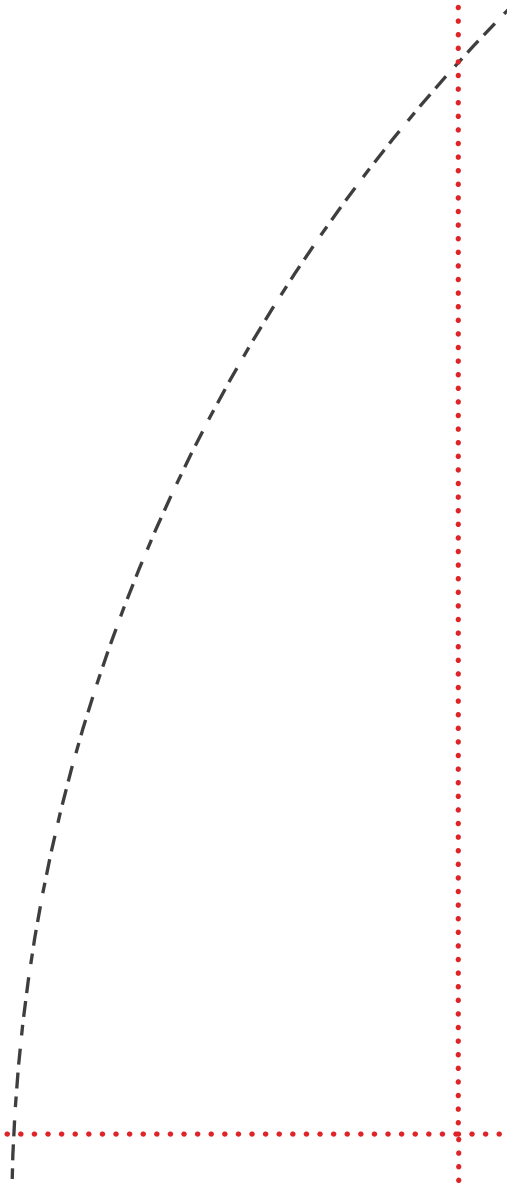
3e

4a

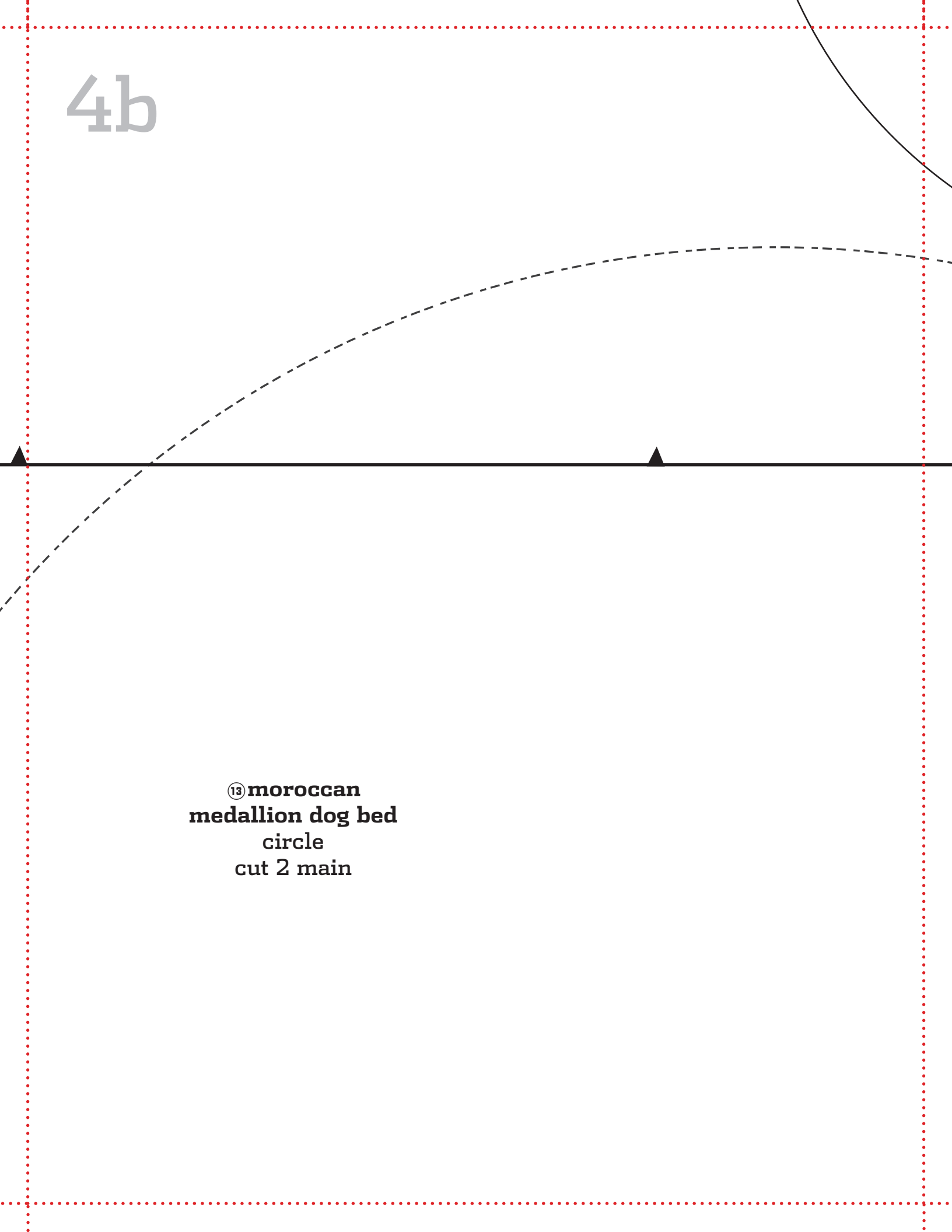
⑩ pocket placement
(shell panel only)



BELLIES

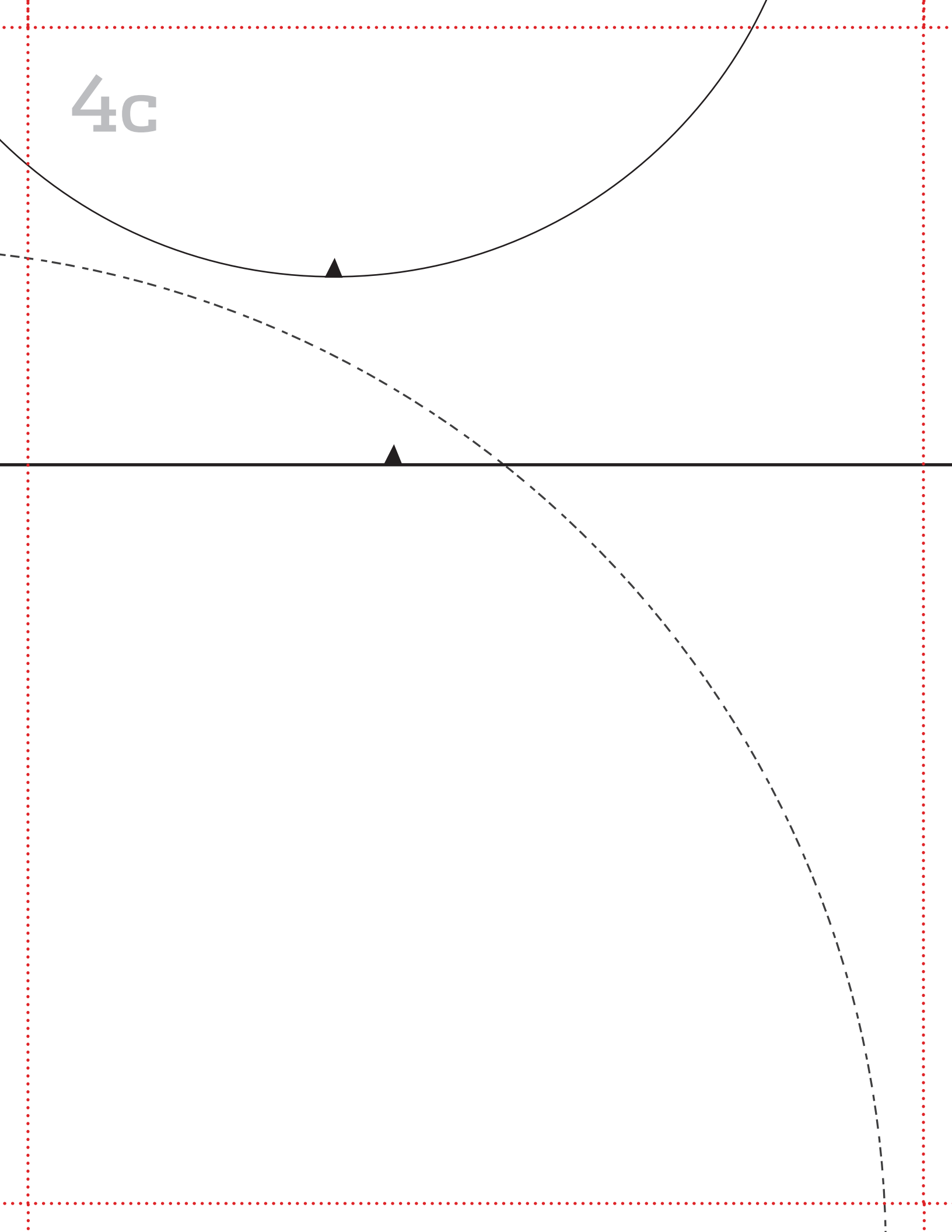


4b

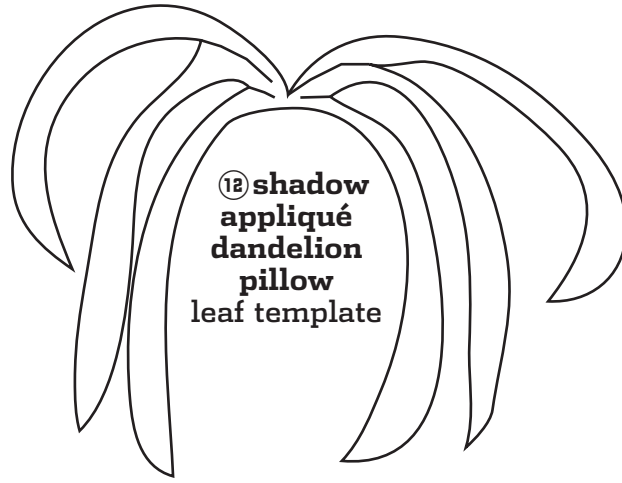


⑬ moroccan
medallion dog bed
circle
cut 2 main

4c



4d



⑫ shadow
appliqué
dandelion
pillow
leaf template

7 weekend travel ensemble
cosmetic bag: end panel
cut 2 each from main and vinyl



7 weekend travel ensemble
duffel bag: pocket
cut 1 from C

7 fold line

4e

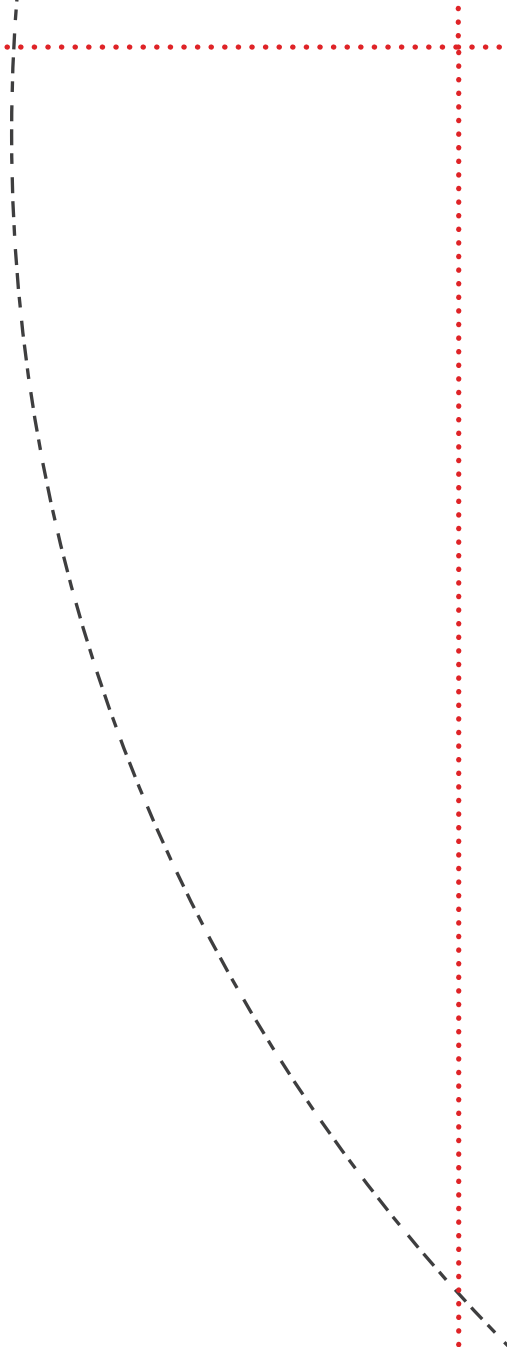


5a

⑨ nesting buckets
lettering templates

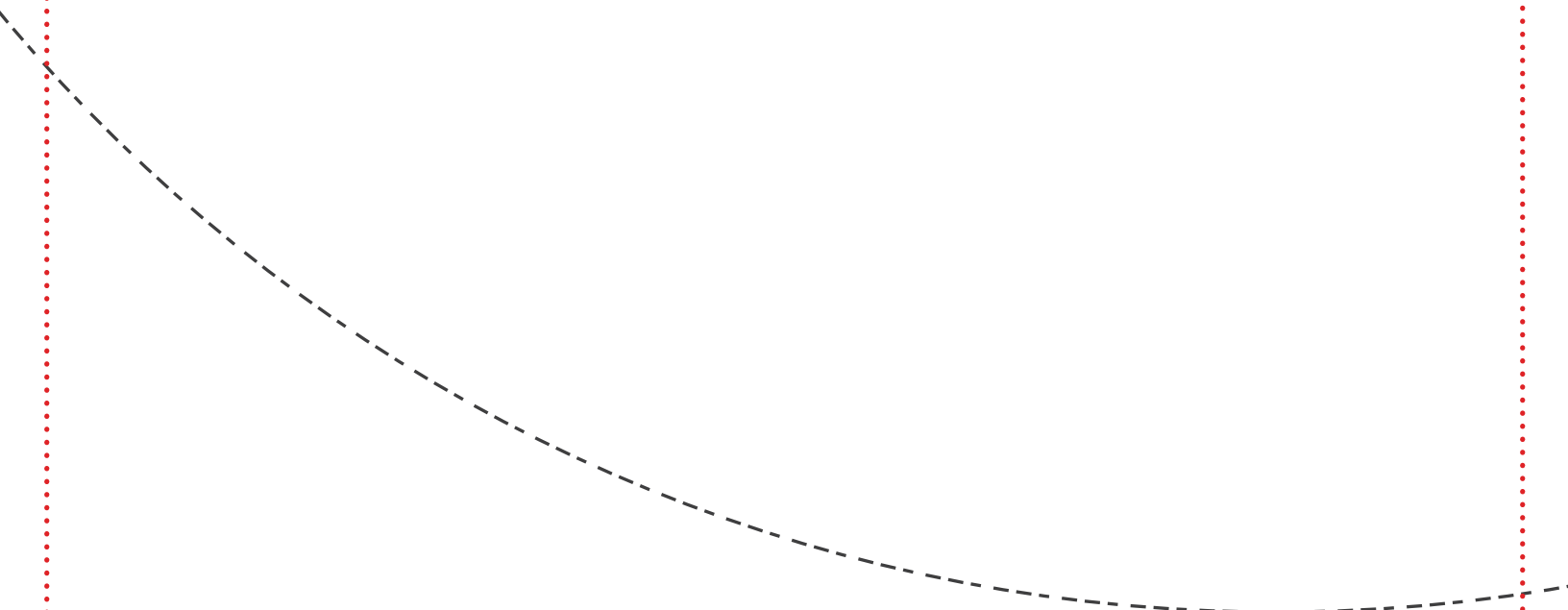
SENDER
REAR
G

SENDER
REAR
M

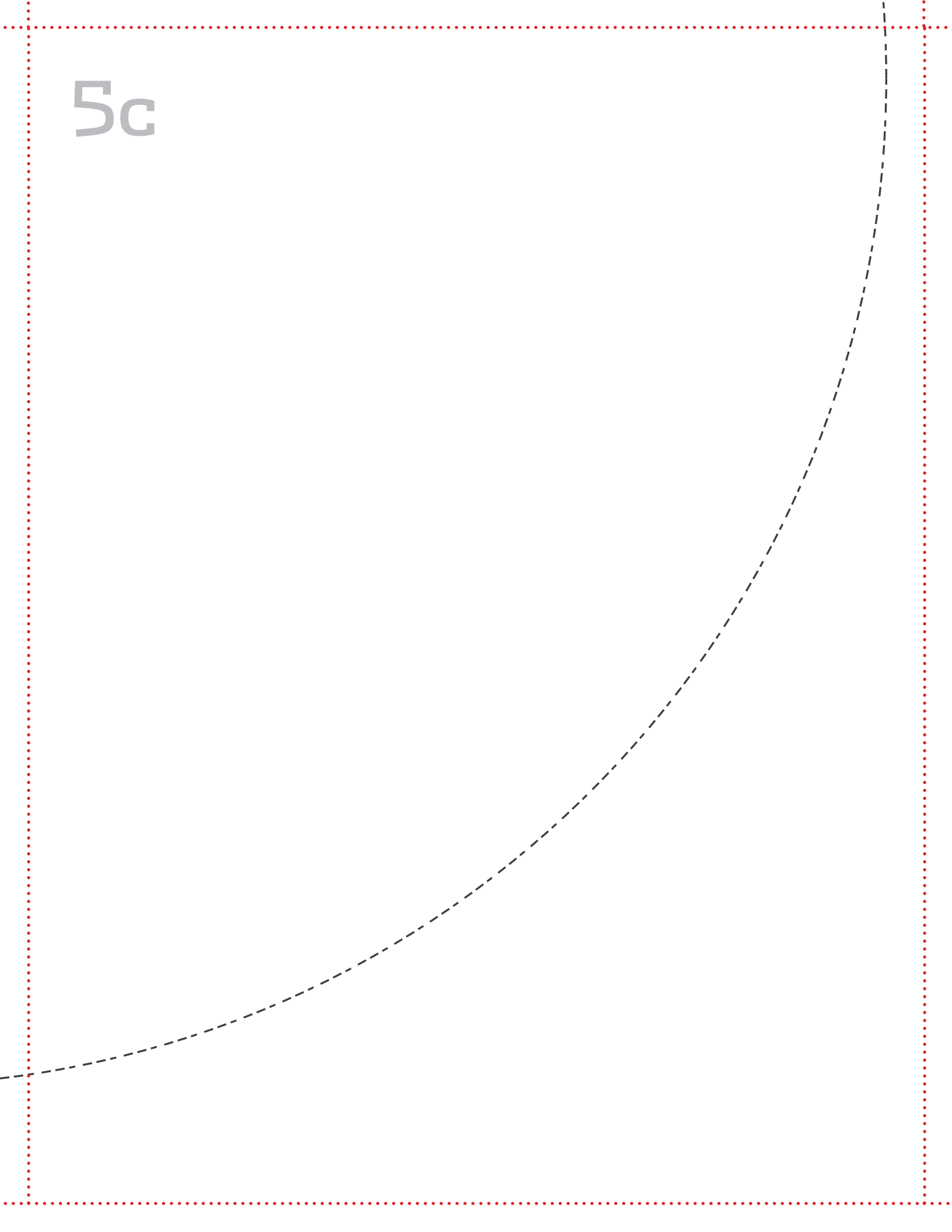


5b

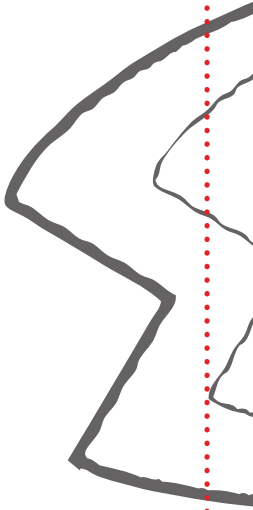
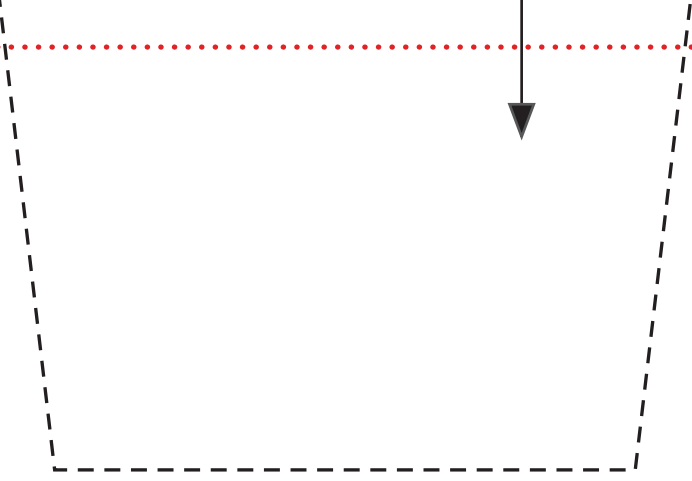
● (13) center



5c



5d



5e

1 sashiko furoshiki
wrapping cloth
flower template

