

SLASH MARKS Long lines indicate an area to make a slash. Further instructions for making the slash will be included in the pattern instructions.



patchwork lace top

In love with all the pretty lace options at the fabric store? Well, why stop at just one? Fearlessly mix and match different laces to make this bias-cut flirt-fest of a top. Finish it off with a simple drawstring waist and velvet tie.

DESIGNED BY *Erin Gilday*

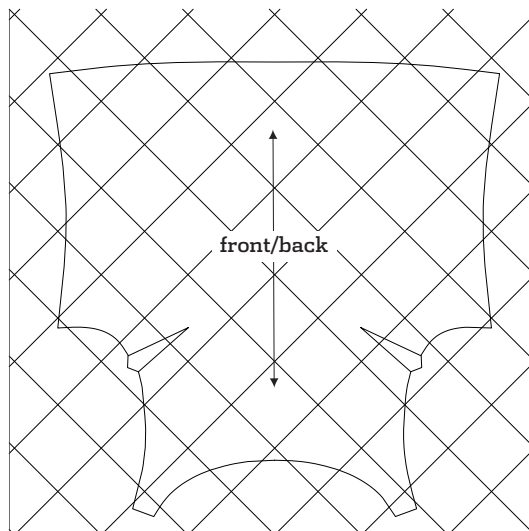
[Photo on page 58; instructions on page 110 of *Stitch* magazine Spring 2010]



CUTTING LAYOUT

lace patchwork panel

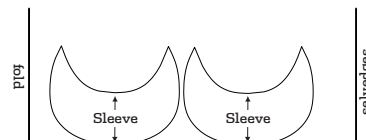
XS, S, M, L, XL



CUTTING LAYOUT

nonstretch lace or eyelet

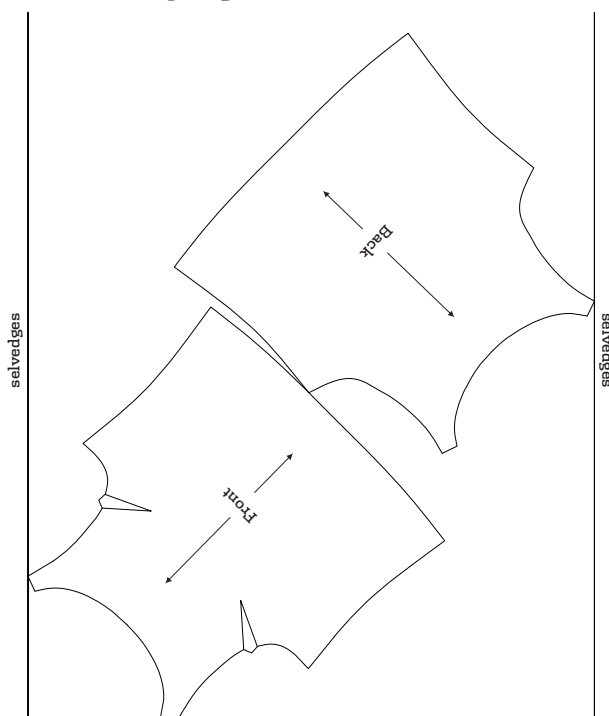
XS, S, M, L, XL



CUTTING LAYOUT

45" (114.5 cm)

alternate lace yardage XS, S, M, L, XL

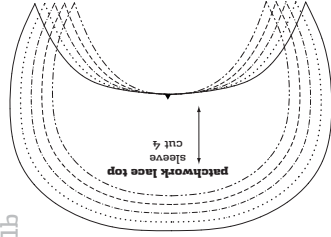


1a

***stitch**
patchwork lace top

patterns
XL
L
M
S
XS

1b



1c

1d

1e

1f

2a

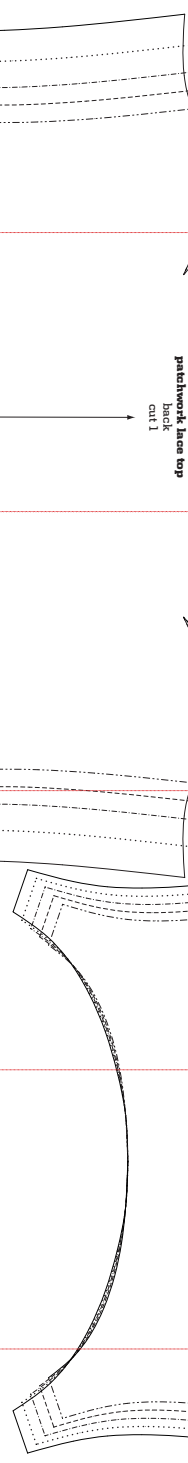
2b

2c

2d

2e

2f



3a

3b

3c

3d

3e

patchwork lace top
front
cut 1

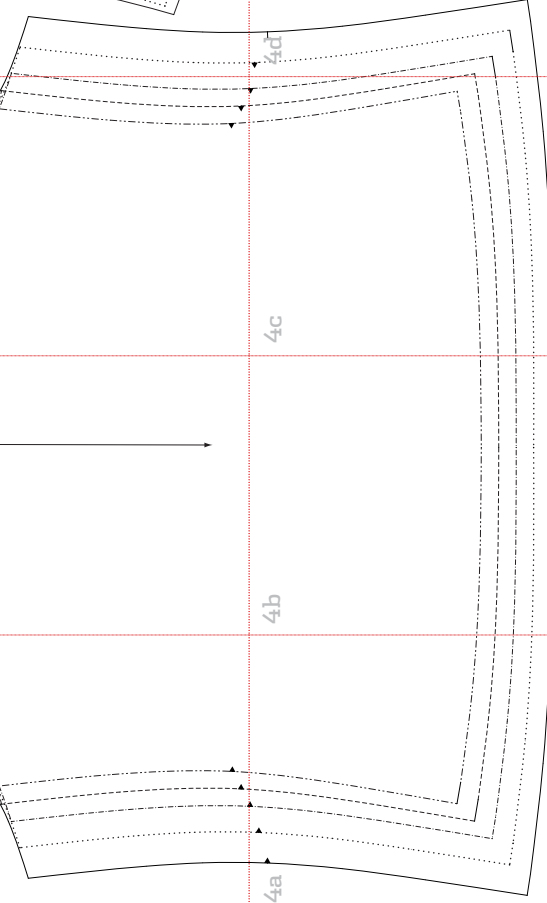


4a

4b

4c

4d



1a

stitch
patchwork lace top

XL _____

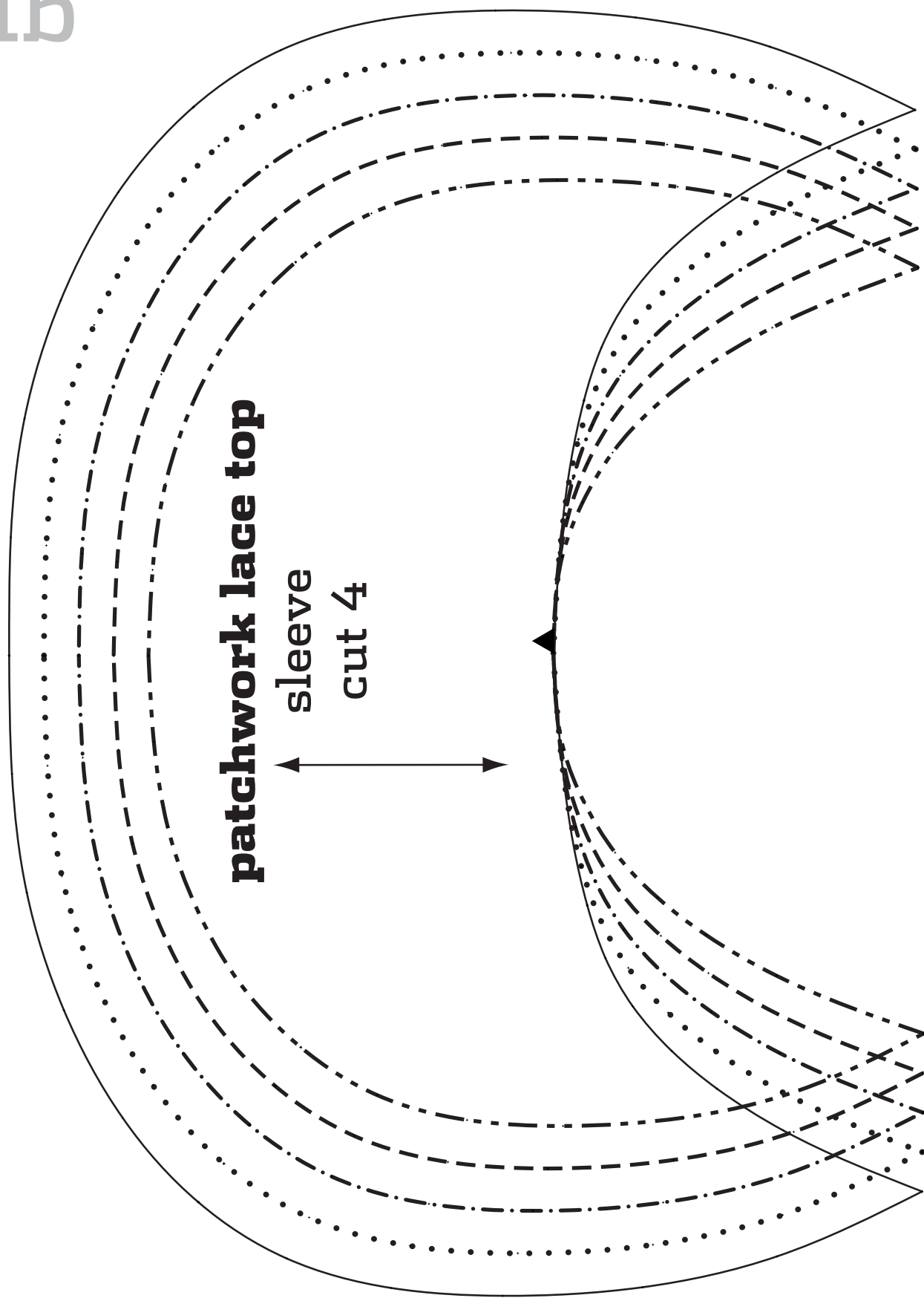
I

M

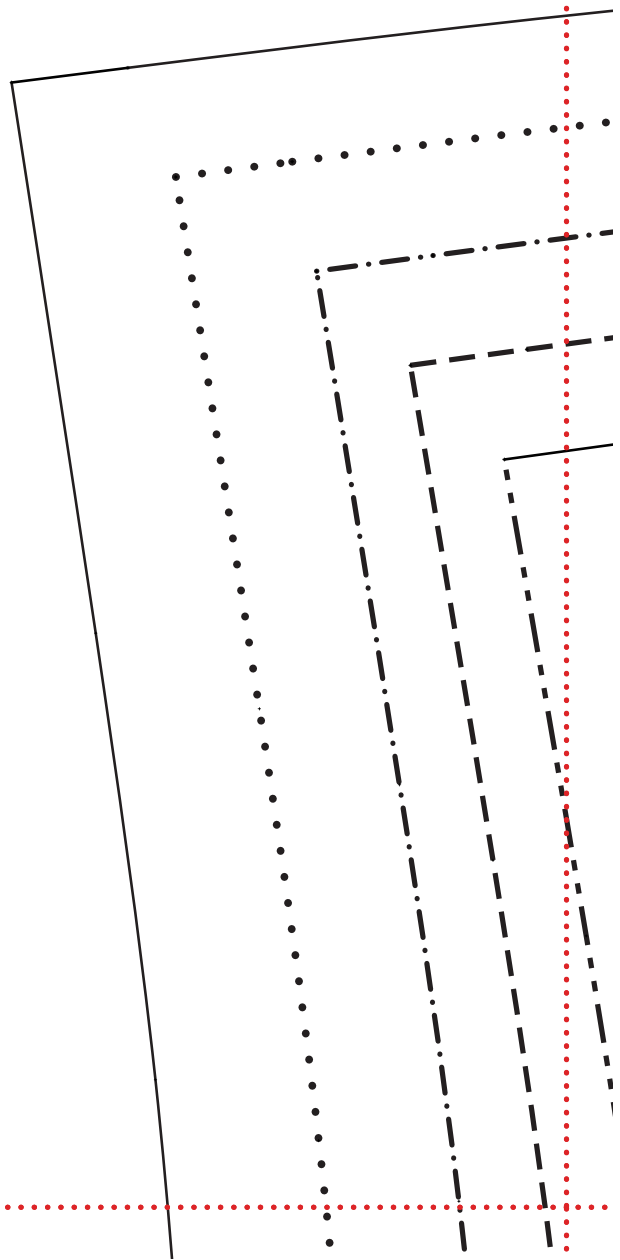
S -----

XS - - - - -

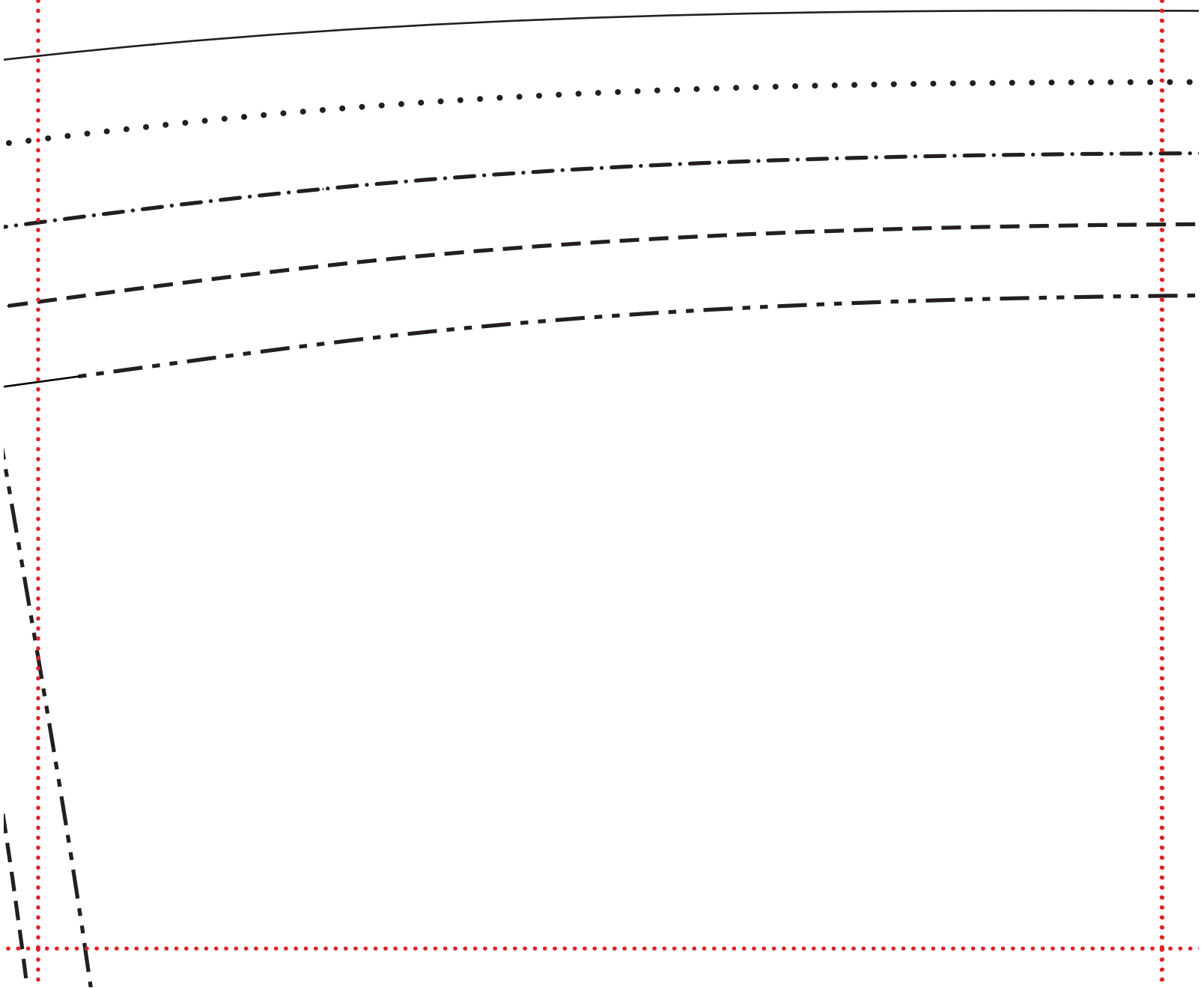
1b



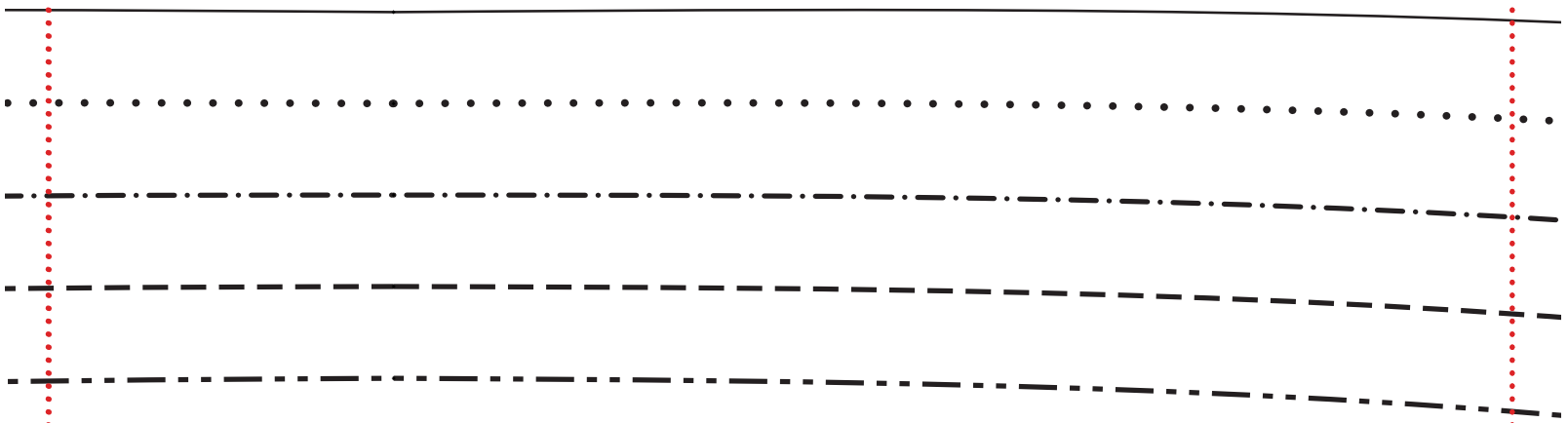
1c



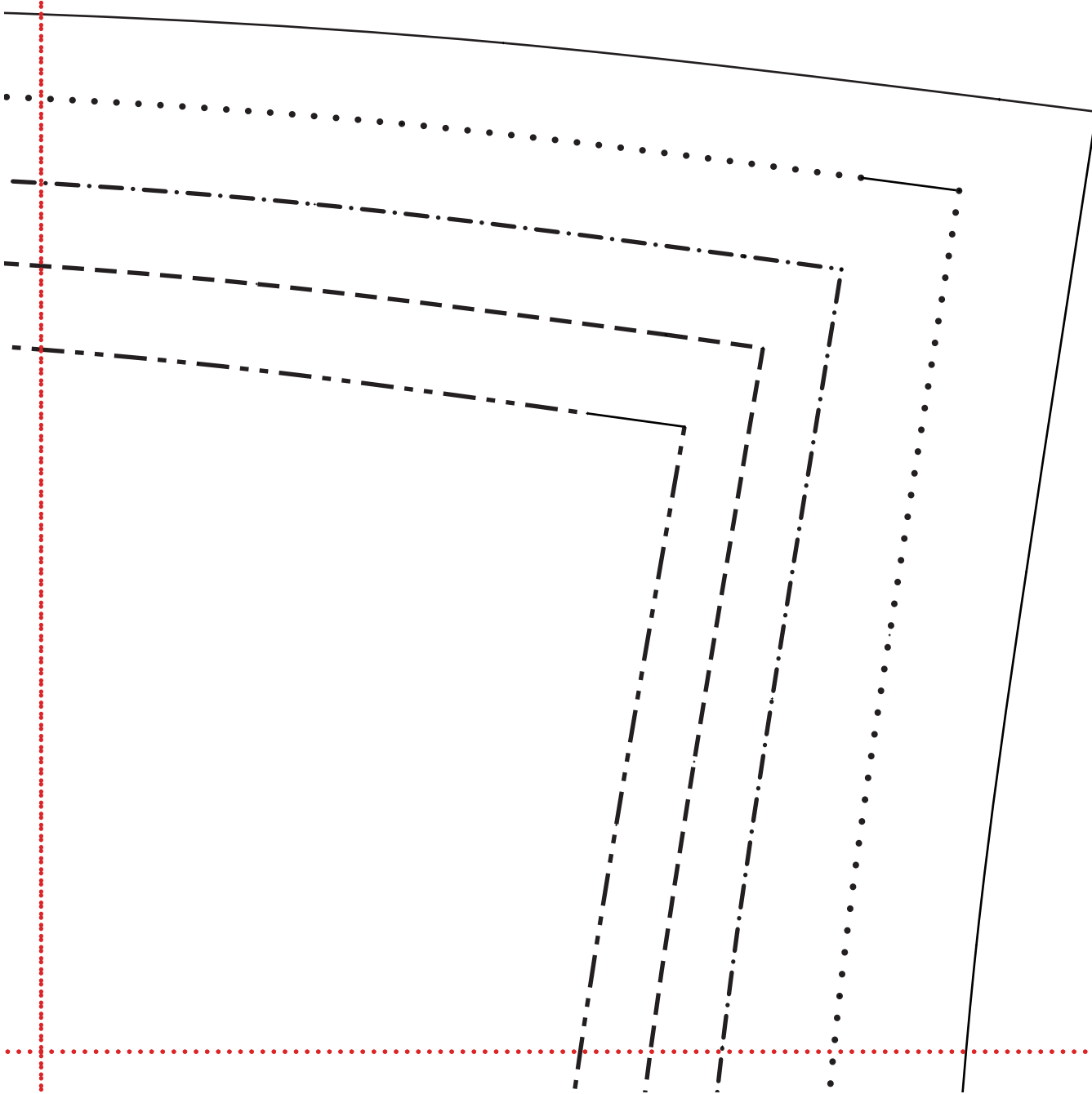
1d



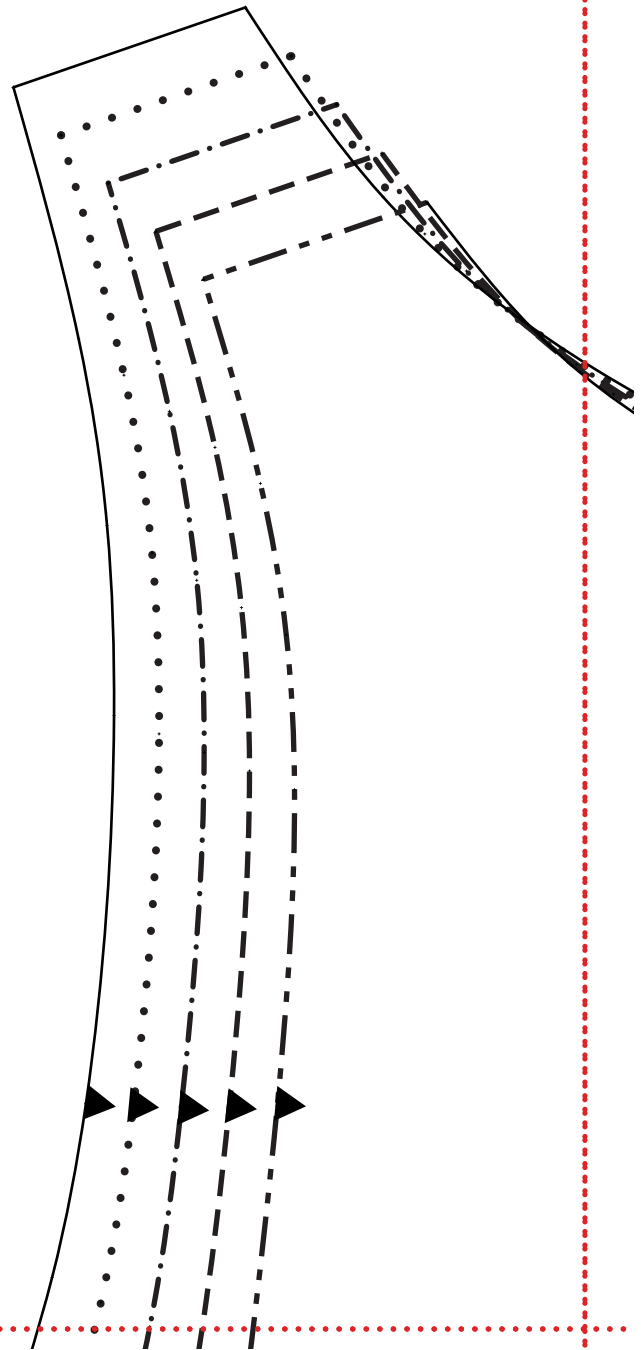
1e



1f



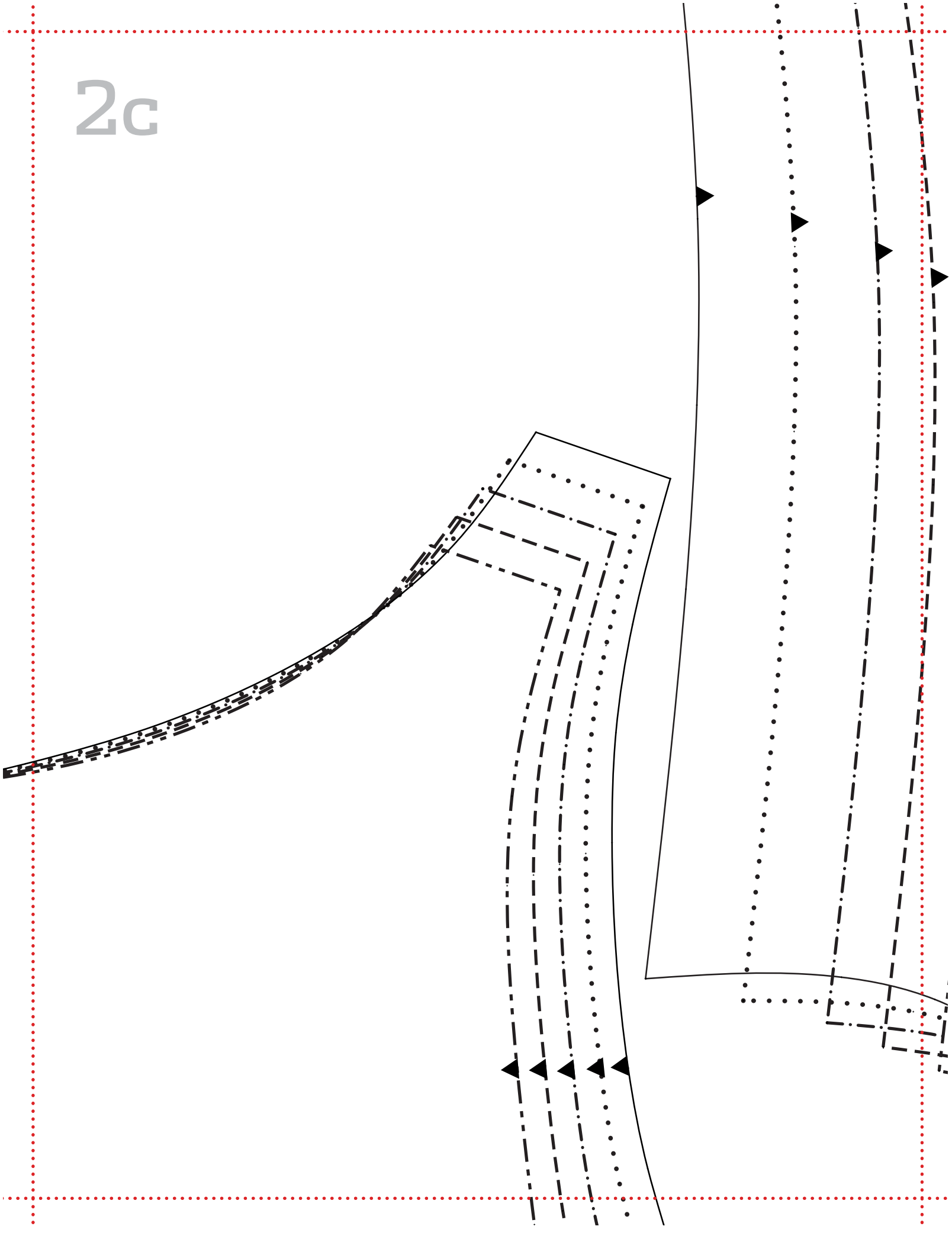
2a

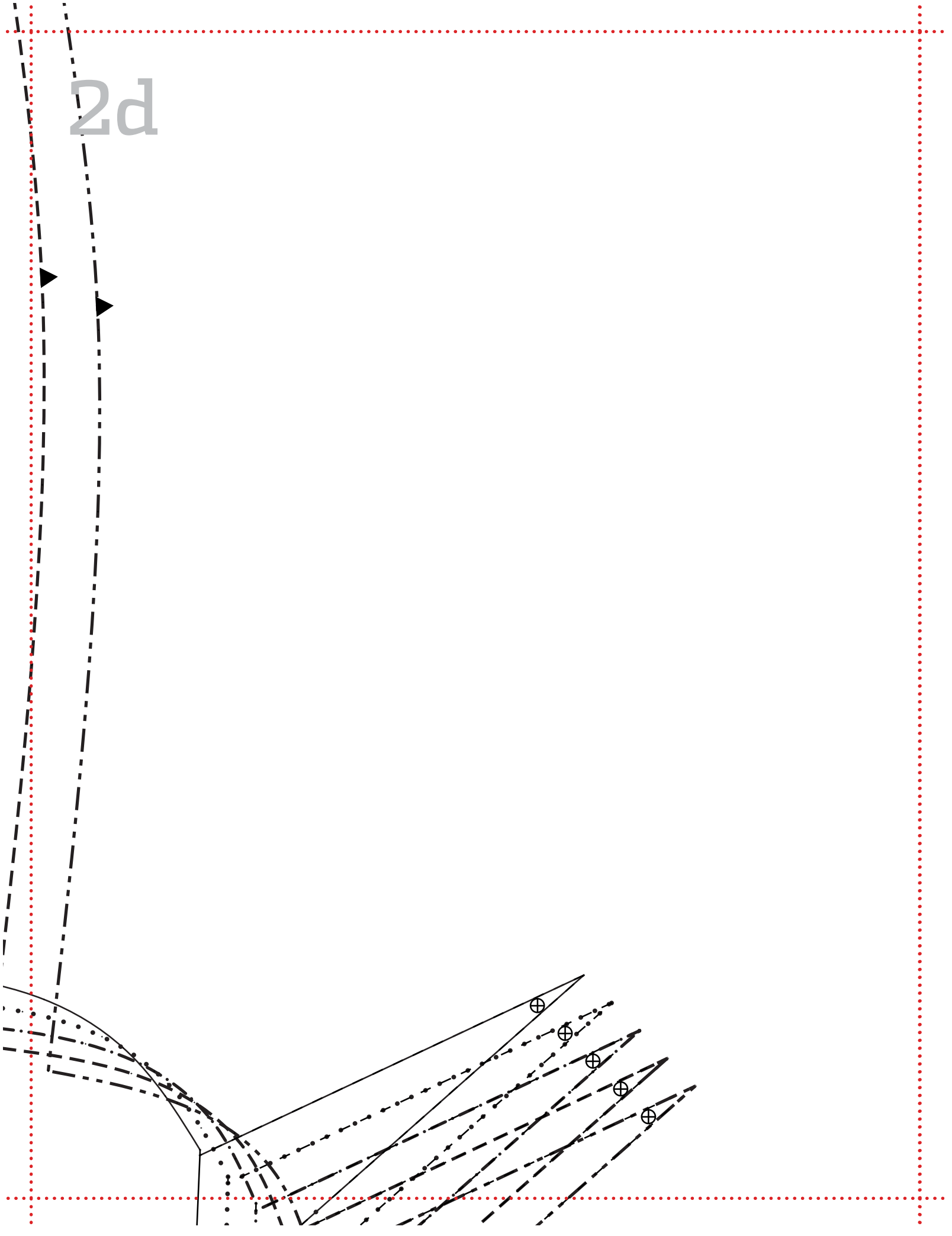


2b



2c

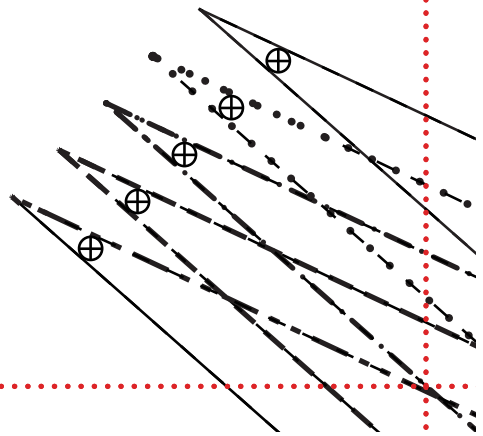




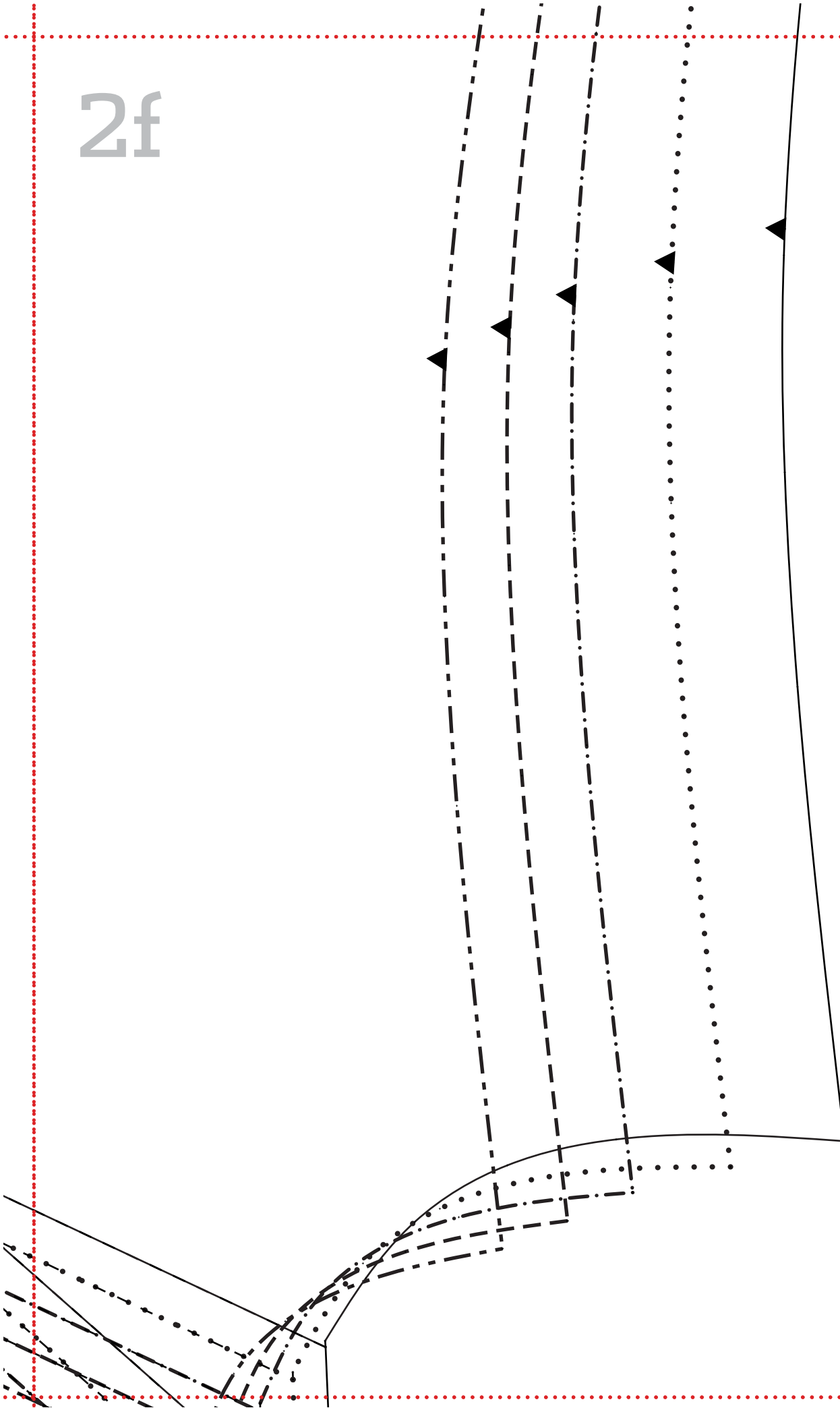
2e



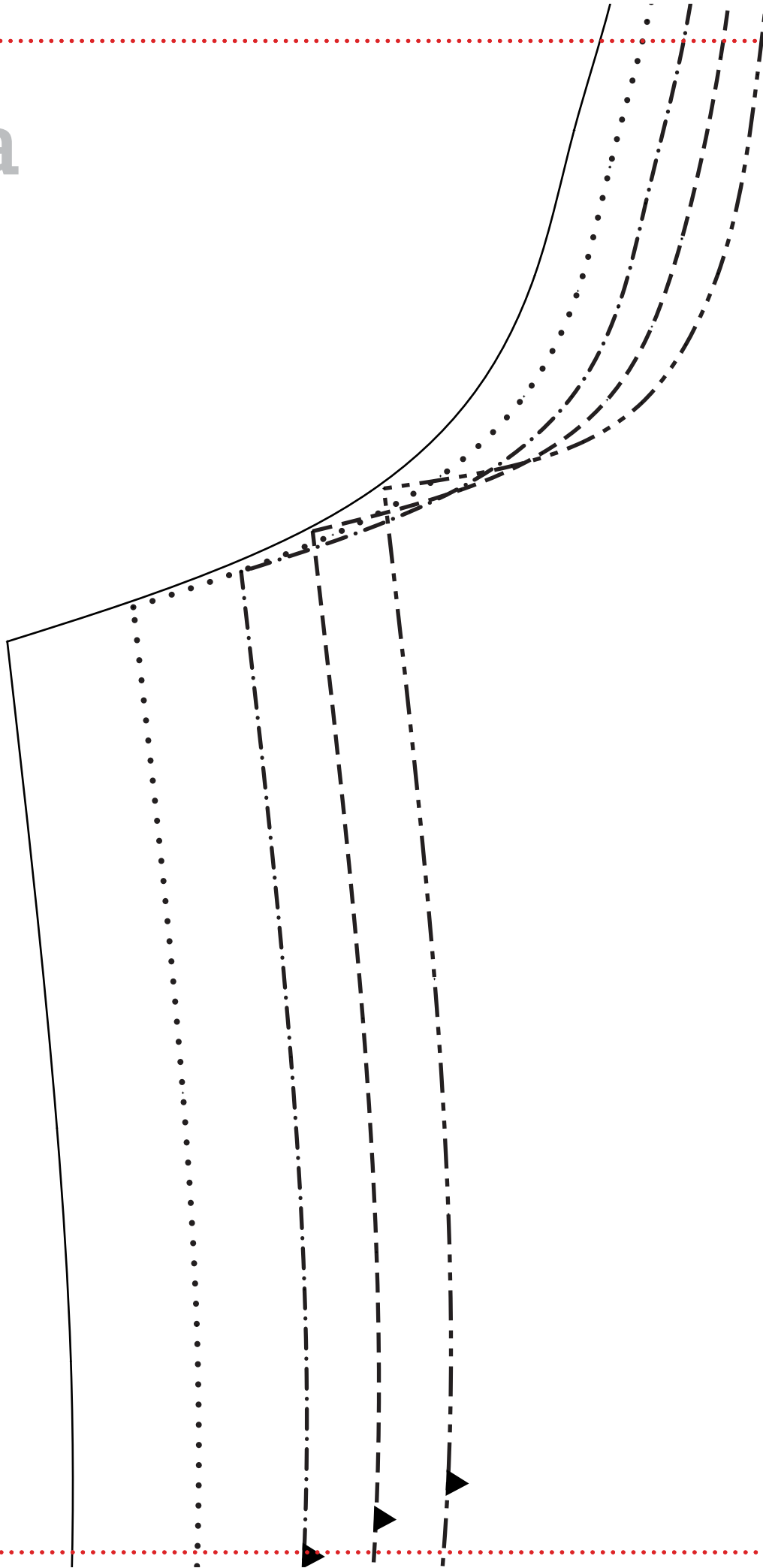
patchwork lace top
back
cut 1



2f



3a



3b

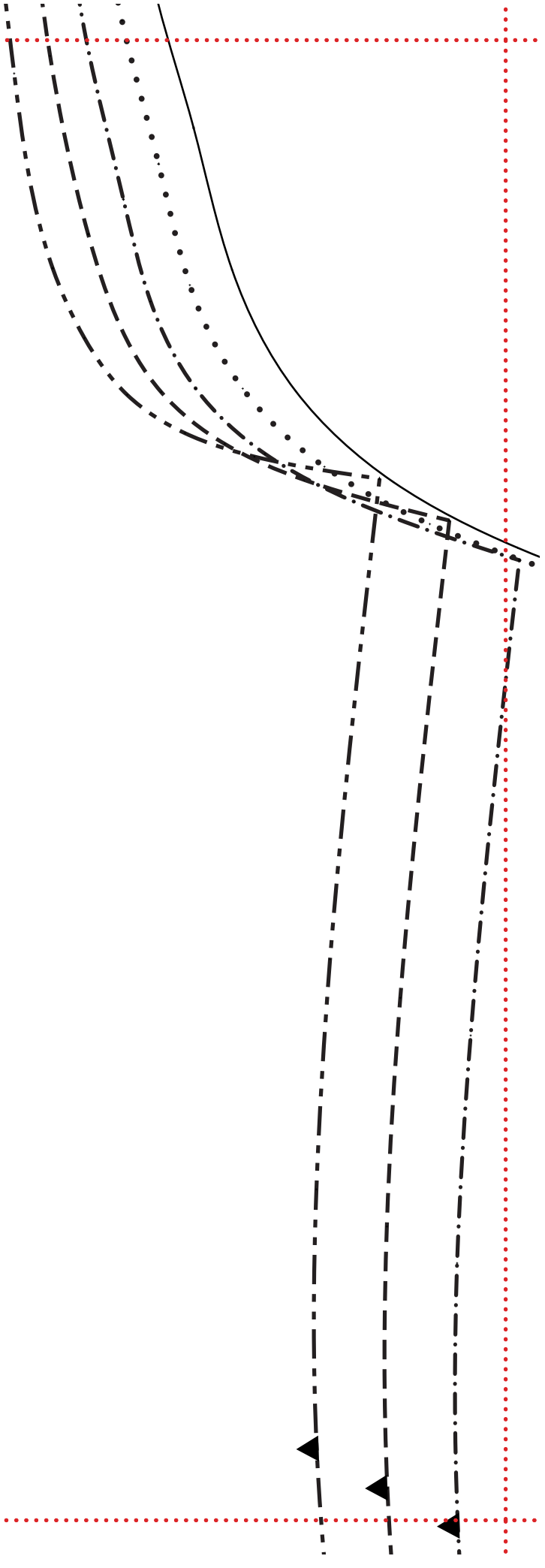
patchwork lace top

front

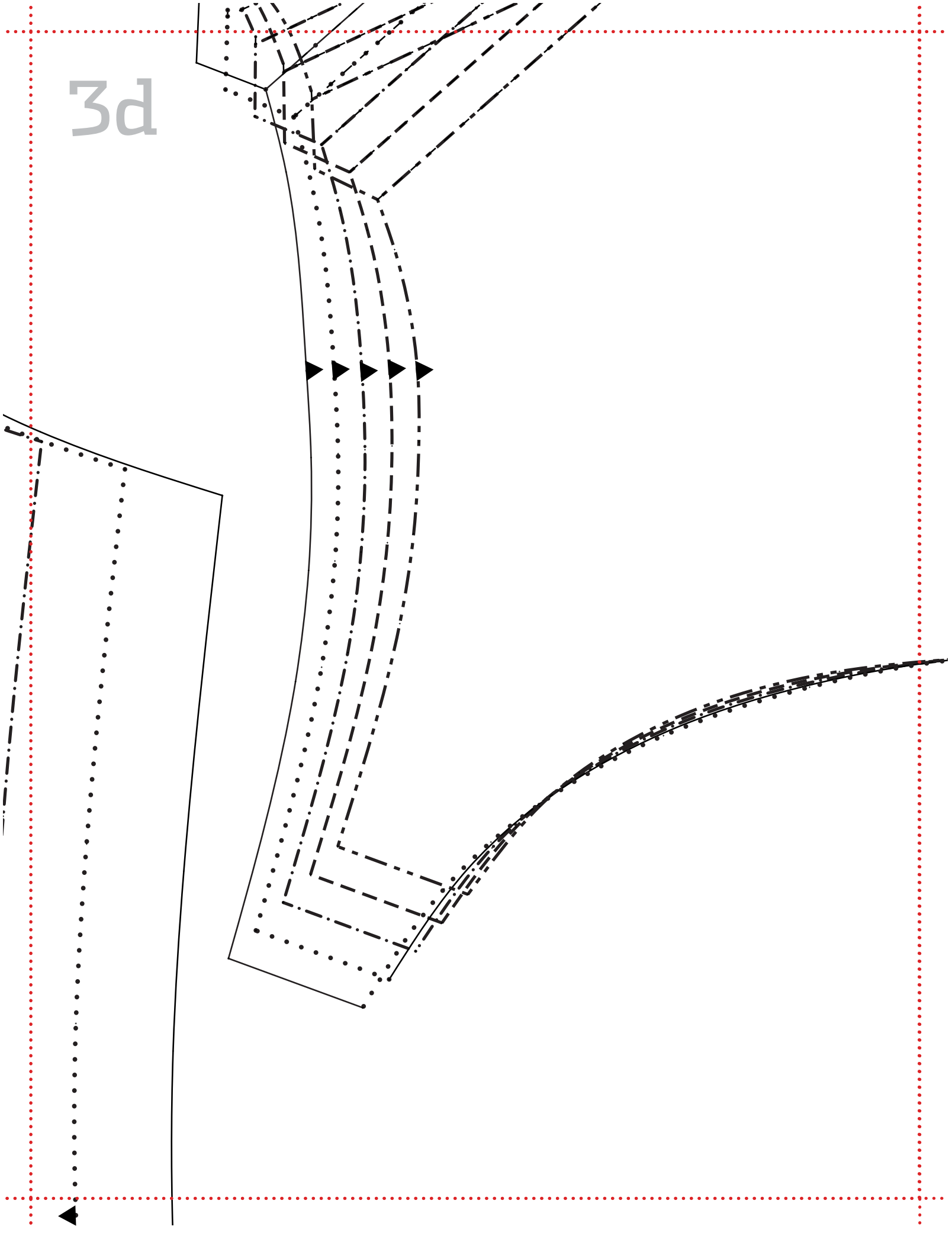
cut 1



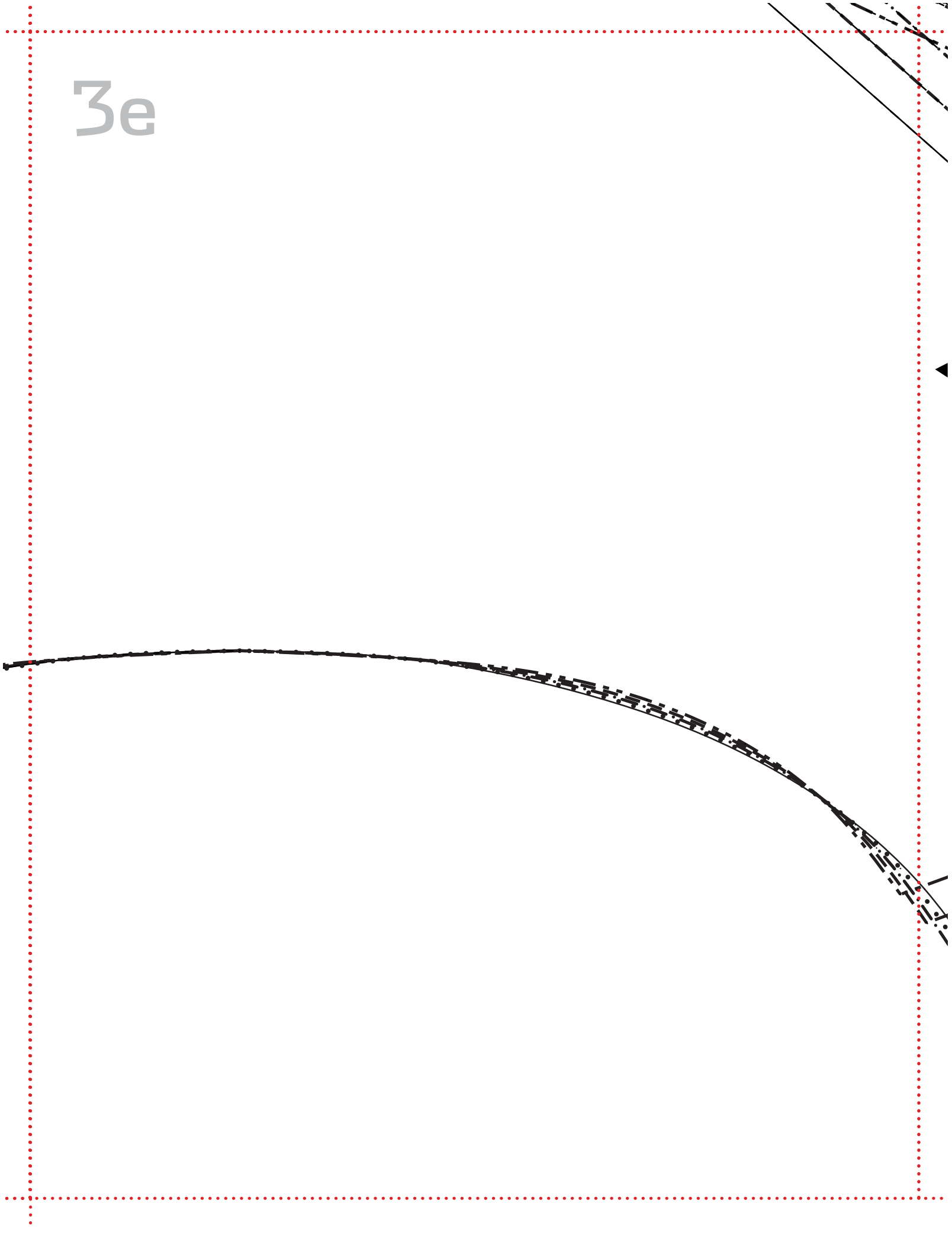
3c

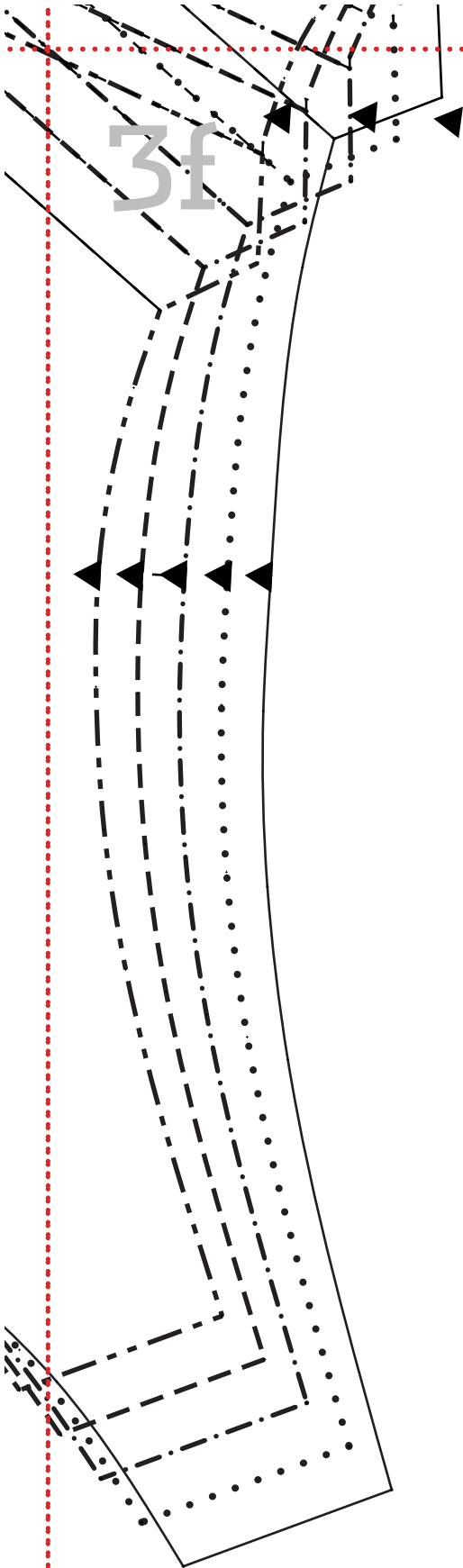


3d

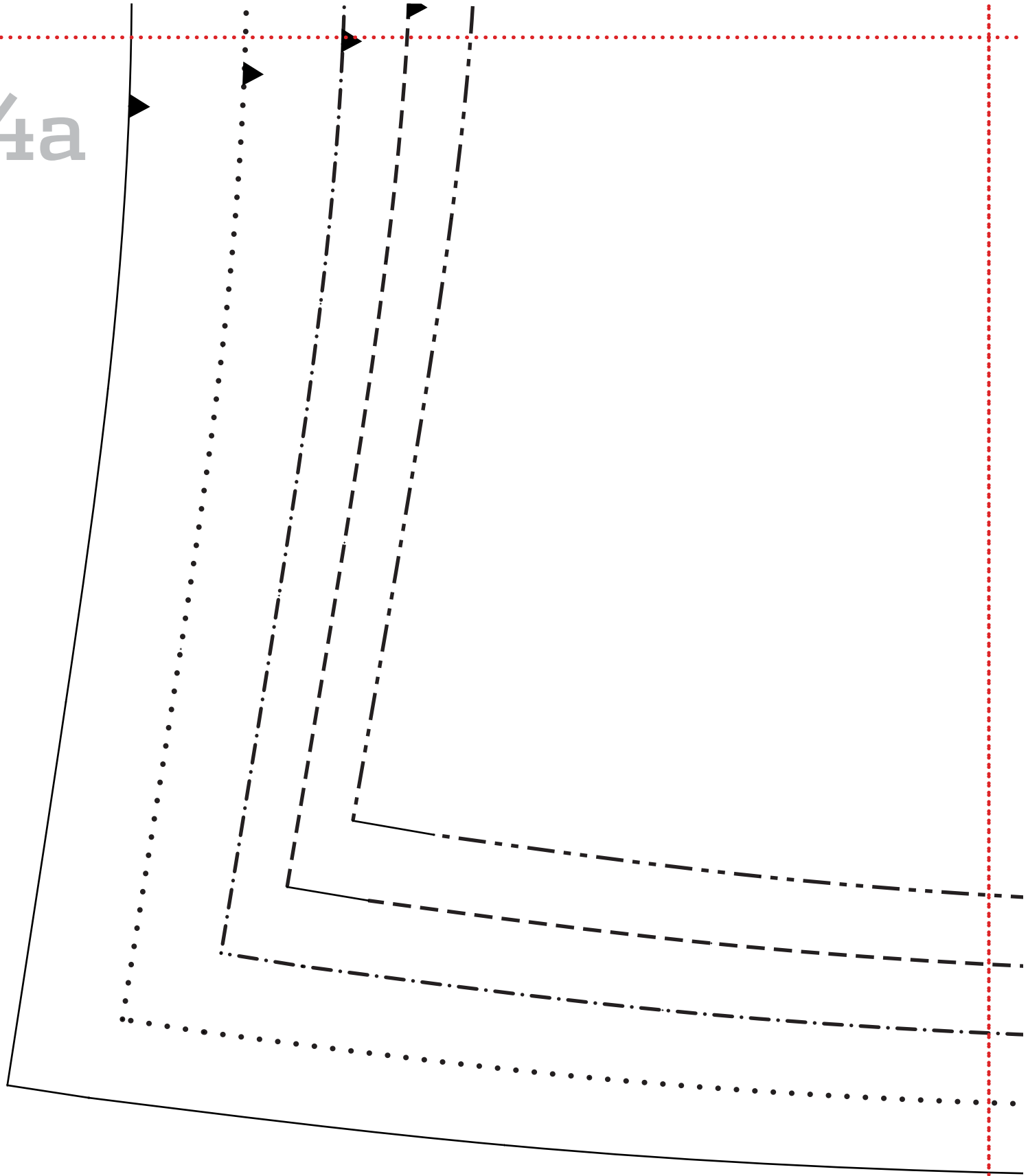


3e

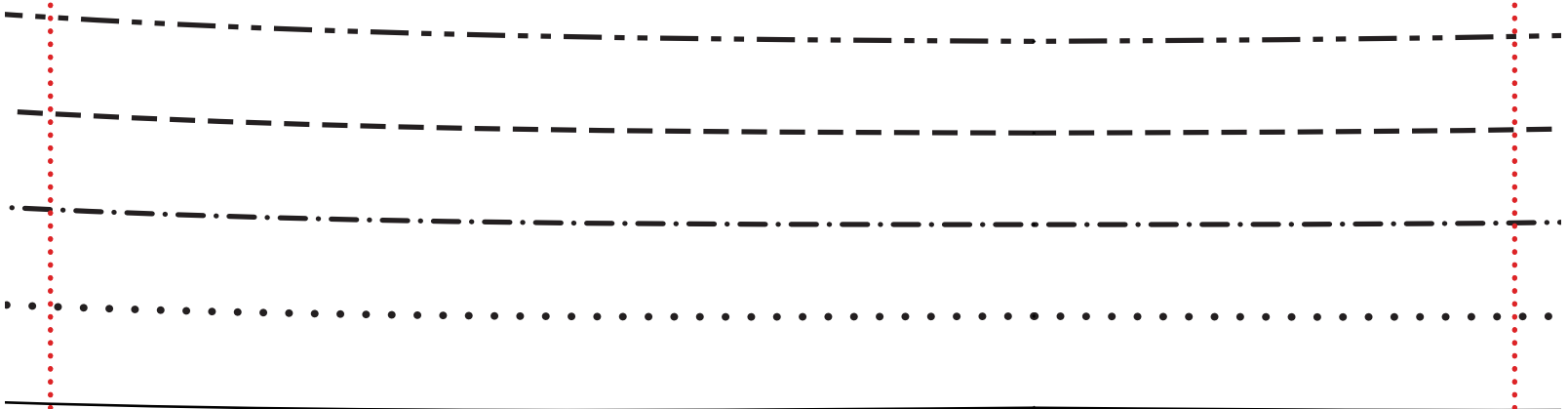




4a



4b



4c

