

reversible coasters

YOU WILL NEED:

(makes four coasters)

- ¼ yard or a fat quarter of fabric A
- ¼ yard or a fat quarter of fabric B
- ruler
- fabric-marking pen
- contrasting all-purpose thread
- hand-sewing needle



CLASS UP YOUR NEXT GATHERING with an elegant set of reversible coasters. Contrasting thread and a built-in decorative stitch are all you need to add just the right touch of subtle embellishment. The coasters are the perfect addition to a party, whether you're entertaining a crowd or just a few friends.

instructions

Use ½" seam allowances unless otherwise noted.

1. From fabric A cut four 5½" squares.
2. From fabric B cut four 5½" squares.
3. Right sides facing, stitch one fabric A and one fabric B square together, leaving an opening along one edge for turning (**A**).
4. Clip the corners and turn the coaster right side out.
5. Press the coaster, turning in the opening edges. Slipstitch the opening closed.
6. Using a ruler and a fabric-marking pen, draw a line ½" from one edge. Draw two more lines, spacing each ½" apart.

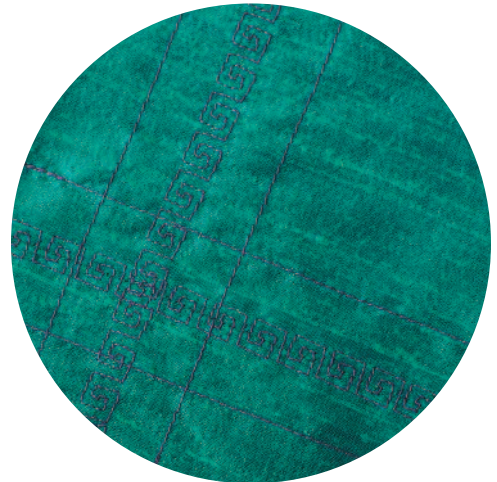
7. Select a decorative stitch on the sewing machine. Stitch along the center line.

8. Straight stitch along the two outer lines (**B**).

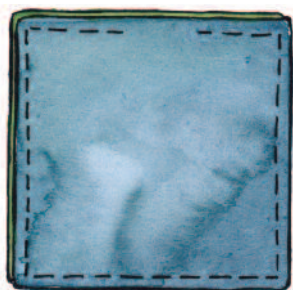
9. Using a ruler and a fabric-marking pen, draw a line ½" from one edge and perpendicular to the stitched lines. Draw two more lines, spacing each ½" apart.

10. Stitch along the lines as directed in steps #7 and #8 (**C**).

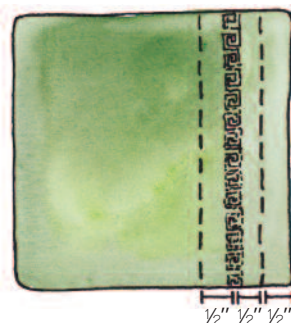
11. Repeat to make three more coasters. •



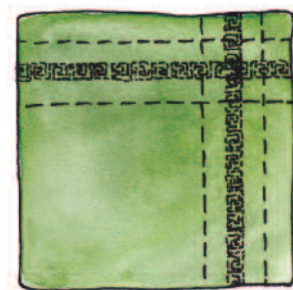
A Stitch around square, leaving opening for turning.



B Add decorative and straight stitching.



C Stitch perpendicular to first lines.







SEWING CIRCLE

Bright fabrics and circle appliques create a completely different, more casual coaster. Stitching the circles helps you perfect your pivoting technique. To make this project easier, use triangle or square appliques.

instructions

YOU WILL NEED:

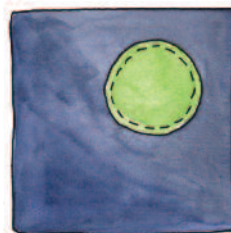
(makes four coasters)

- $\frac{1}{3}$ yard of fabric A
- scraps of four other fabrics
- all-purpose thread matched to fabric A

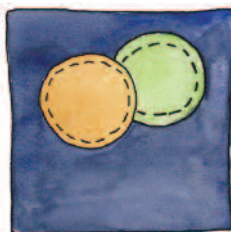
Use $\frac{1}{2}$ " seam allowances unless otherwise noted.

1. From fabric A cut eight $5\frac{1}{2}$ " squares.
2. Cut four 2"-diameter circles from each of the four fabric scraps.
3. Position one of each colored circle over a fabric A square, slightly overlapping the circles. Use a fabric-marking pen to trace around each circle. Remove the circles.
4. Position one circle on the fabric A square right side. Straight stitch around the circle (1).
5. Position a second circle over the coaster, slightly overlapping the first. Stitch (2).
6. Repeat to stitch the two remaining circles (3).
7. Repeat to stitch circles on three more fabric A squares.
8. Right sides facing, stitch a plain square and a stitched square together, leaving an opening for turning.
9. Clip the corners. Turn the coaster right side out.
10. Press the coaster, turning in the opening edges. Slipstitch the opening closed.
11. Repeat to stitch three more coasters.

1



2



3

