



Stitch Call for Submissions – Winter 2013

Stitch Magazine, a quarterly Special Interest Publication from Interweave, is seeking submissions for the Winter 2013 issue arriving on newsstands in August 2013: <http://www.sewdaily.com/blogs/stitchissues/pages/stitch-submissions.aspx>

Submissions can be sent by email or snail mail. **Submissions should include:**

- A brief description of the project idea explaining the basic construction and key design elements.
- Project sketch or photo of actual work.
- Swatches of the fabric samples you propose.
- Your name, address, email, website, and phone number, and a short bio listing your credentials (such as previous project design and/or writing experience).

Please e-mail submissions to: <mailto:stitchsubmissions@interweave.com> or mail them to:

Interweave Stitch
ATTN: Submissions
490 Boston Post Road, Suite 15
Sudbury, MA 01776

****IMPORTANT DATES****

Submission Deadline is **March 1, 2013**. You will be notified if your project has been accepted by **March 22, 2013**. Project payments will be negotiated upon acceptance. Accepted final projects with complete instructions (including any related size-graded patterns, templates and technique illustration roughs) are due in the Stitch office by **April 19, 2013**. All projects must be your own original design.

PROJECT THEMES

The overall theme for Stitch Winter 2013 is Back to Natural and includes projects, fabrics and techniques inspired by respecting and embracing the natural world through creative expression in our wardrobes and our homes. Winter is usually the season of withdrawal and retreat, but what better time to dream up styles and projects that express your love of the natural world through sewing. Think outside the box and send us designs that are fun and unexpected, with unique details and clever construction. **Please submit your project ideas according to the project themes below.** You can submit ideas for more than one theme or several ideas under the same theme. If you have a great idea but you're not sure which theme it falls under, submit it anyway! Use the color palettes attached as a guide for choosing fabrics and notions. Make sure fabric choices are appropriate for the season.

Tweeds and Plaids– Inspired by the fabrics that embrace and echo wintry landscapes, these projects play with the time-honored patterns and woolen fabrics. Tweeds and plaids are the true fabrics of winter. Create projects that wrap our bodies and homes in warmth. Think wearables for both adults and children, as well as home décor items.

Sustainable Fashion – From upcycled projects to transformative, shape-shifter clothing and home dec items (garments or items that can be worn or used more than one way), give objects new life or extend the wearability

of a garment to move the focus in wardrobe and home from acquisitive to sustainable and multi-use. Projects can include home and fashion accessories, as well as gift, and children's items.

Goddess Style – Dream up fantastic and romantic projects that reflect and express the goddess in you. From earth mother-inspired skirts to flowing garb, to regal hats, to home dec items befitting the goddess lifestyle, projects can include wearables and home accessories, and gifts.

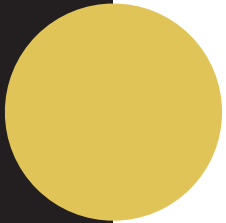
Hands On Nature– Use embellishment, embroidery and applique to reflect the shapes, silhouettes and patterns of the natural world. Apply texture and surface design to create a world within a world. Projects can include wearables, home accessories, gifts and children's items.

Arctic Reflections – What are the colors of winter in the wild? Gather inspiration for your wintry projects and cold-weather gear from cool arctic whites, frosty blues, and earthy, icy tones. Projects can include accessory, wearable, gift, and home décor items.

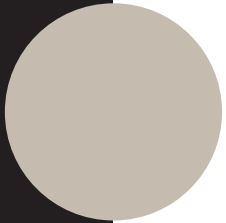
LIME SURPRISE



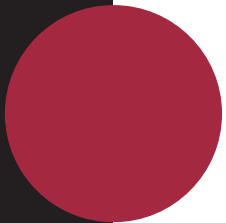
LEMON DUST



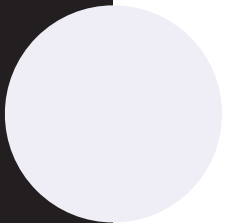
GRAY



MULBERRY



MIST

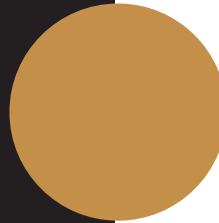


LIME SURPRISE

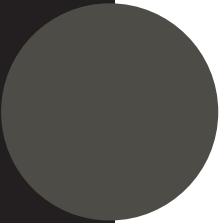
FOREST



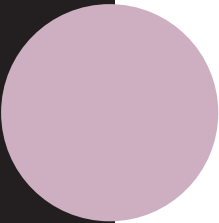
MUSTARD



CHARCOAL



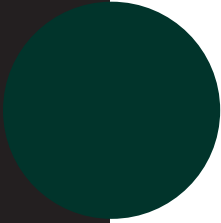
LAVENDAR



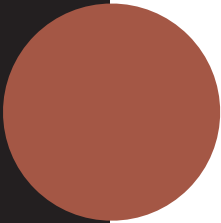
RETRO BLUE



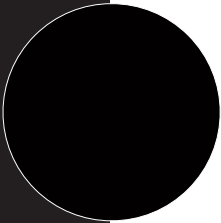
SPRUCE



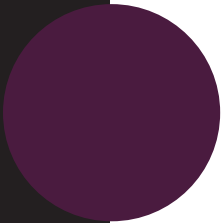
CINNAMON



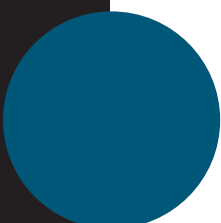
COAL



GRAPE



MYSTERY



FOREST

MUSTARD

CHARCOAL

LAVENDAR

RETRO BLUE

SPRUCE

CINNAMON

COAL

GRAPE

MYSTERY

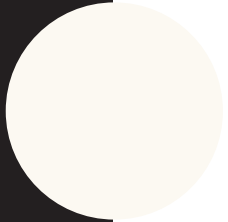


PICKY
SUNNY
BURGUNDY
VANILLA
COAL

ENAMEL
SPROUT
ELECTRIC
RIPE
MYSTERY

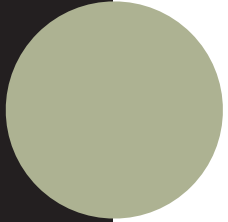
BLUE FISH
RAIN
PEACH CRUSH
STORMY
NIGHT SHADOW

DOVE



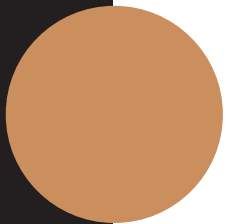
DOVE

WINTER MINT



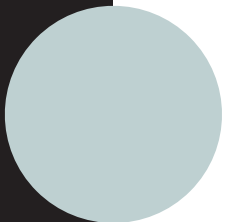
WINTER MINT

SAND



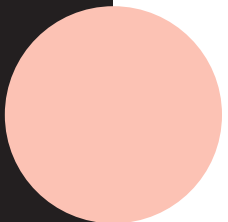
SAND

SKY



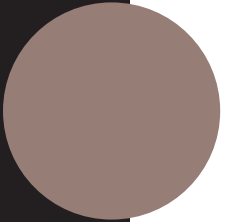
SKY

ROSE BLUSH



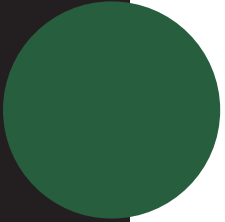
ROSE BLUSH

WET SAND



WET SAND

MAPLE



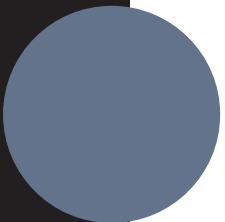
MAPLE

SUNSET



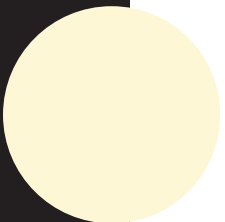
SUNSET

DEMIN



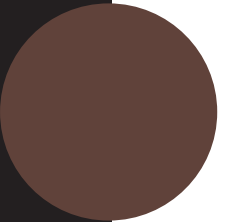
DEMIN

VANILLA ICE



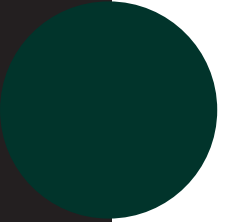
VANILLA ICE

BARK



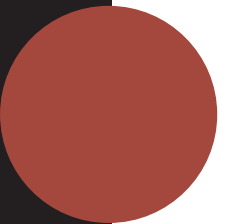
BARK

SPRUCE



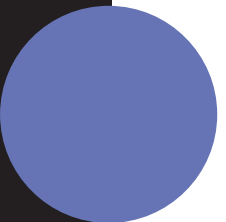
SPRUCE

TERRA COTA



TERRA COTA

LILAC



LILAC

HOLLY



HOLLY

