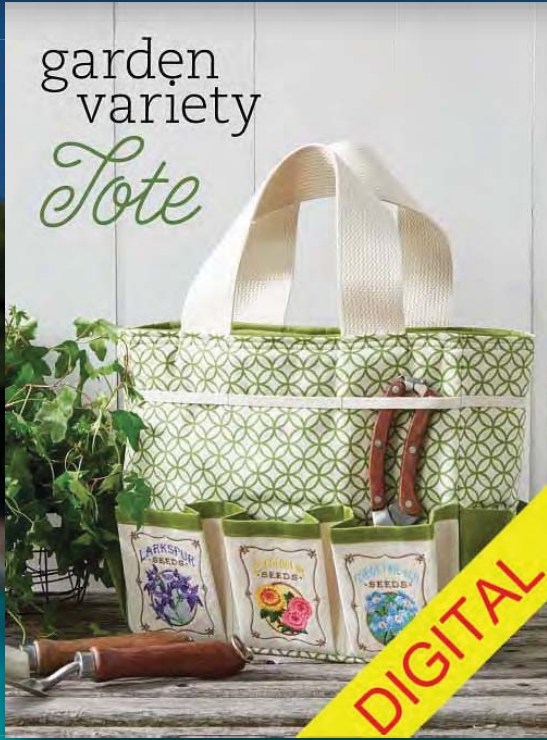


SUMMER FUN TOTES & BAGS



garden variety

Tote

BY JESSICA GIARDINO

Keep track of all your tools in an oversized gardening tote that has plenty of storage, inside and out. Delightful seed packet embroidery designs liven up the pockets while you're digging in the dirt.



MATERIALS

Supplies listed are enough to make one 5"x11"x12" tote.

- + 1¼ yards of Fabric A & Fabric B (See "Fabric Notes.")
- + 1/3 yard of Fabric C (See "Fabric Notes.")
- + 1¼ yards of 45"-wide fusible fleece
- + 1 yard of 1½"-wide cotton webbing
- + 1¼ yards of ¼"-wide coordinating elastic
- + Heavyweight cut-away stabilizer (Amount determined by hoop size.)
- + Thread: all-purpose & embroidery
- + Six 3"x4" (or smaller) gardening-themed embroidery designs (See "Designs.")
- + Removable fabric marker
- + Temporary spray adhesive

PREPARE

- Download and print out the Garden Variety Tote pattern from cmemag.com/freebies.

- From Fabric A, cut two wide bag sides, two wide side-lining pockets, one bag base and two narrow bag sides.
- From Fabric B, cut two wide bag sides, two narrow bag sides, two narrow pockets, two pleated pocket liners and one bag base.
- From Fabric C, cut two rectangles that measure at least as wide and long as the pleated pocket pattern piece; this piece is trimmed later. The rectangle size accommodates hooping the pockets.
- From the heavyweight cut-away stabilizer, cut six rectangles to fit the intended hoop.
- From the fusible fleece, cut four wide bag sides, two bag bases, one wide side-lining pocket and four narrow bag sides. Cut the wide side-lining pocket in half lengthwise. Trim roughly ½" from the width and length of each fusible fleece pattern piece to reduce bulk in the seam allowances. Fuse each piece to the corresponding fabric piece.
- Fold one Fabric-A lining pocket in half lengthwise with wrong sides facing; press. Sandwich one fusible-fleece half pocket between the Fabric-A wrong sides; fuse. Repeat to fuse the remaining Fabric-A lining pocket.
- Cut the webbing in half widthwise.

FABRIC NOTES



The featured project showcases three fabrics. When purchasing yardage, consider how many fabrics you desire and where to use them. For the featured bag, note each fabric on the applicable pattern piece.

- Fabric A: This outdoor fabric is used on the bag exterior wide and narrow sides and the interior pockets. To allow for fussy cutting and/or print matching, and depending on the print scale, extra fabric may be needed.
- Fabric B: This green outdoor fabric is used for the exterior narrow pockets, pleated pocket liner and interior wide and narrow sides.
- Fabric C: Used on the pleated pocket, this canvas holds dense designs better than open-weave outdoor fabrics though it shrinks easily when washed, so extra fabric may be needed.



EMBROIDER

- Place the pleated pocket pattern piece over one Fabric-C rectangle. Using a removable fabric marker, transfer the design placement marks.
- Attach a stabilizer rectangle to each canvas wrong side using temporary spray adhesive, centering the stabilizer behind each design placement mark.
- Determine the desired design order for the pockets. Load the first design onto the embroidery machine.
- Hoop the fabric and stabilizer, centering one design placement crossmark in the hoop. Roll the remaining fabric and clip near the hoop edge to prevent it from hindering the stitchout.
- Embroider the first design, trimming jump threads with each color change.



- Remove the hoop from the machine and the fabric from the hoop.
- Repeat to embroider six designs onto the two pleated pockets.

CONSTRUCT

Use $\frac{1}{2}$ " seam allowances unless otherwise noted.

- Topstitch $\frac{1}{2}$ " from the fold on both wide side-lining pockets.
- Place one Fabric-B wide bag side right side up on a work surface. Place the wide side-lining pocket over the bag side, aligning the lower edges; pin.
- Using a removable fabric marker, mark the pocket lengthwise center. Stitch along the mark, backstitching at the upper and lower edges. Stitch $\frac{1}{4}$ " from the lower and side edges, securing the pocket to the bag side. Repeat to complete the remaining Fabric-B wide bag side and lining pocket.
- Align one Fabric-B narrow end right sides together with one Fabric-B wide bag side, pin and then stitch **(A)**. Repeat to pin and stitch the remaining Fabric-B narrow end and Fabric-B wide bag side.
- Pin one Fabric-B narrow raw edge to one Fabric-B wide raw edge; stitch. Repeat to stitch the remaining Fabric-B bag lining sides.
- Align one Fabric-B base long edge with one Fabric-B wide bag-side long edge; pin with right sides together. Stitch, leaving $\frac{1}{2}$ " free on each Fabric-B base end **(B)**.
- Repeat to stitch the Fabric-B base to the remaining Fabric-B wide bag-side lower edge **(C)**.



A



B



C



Tip

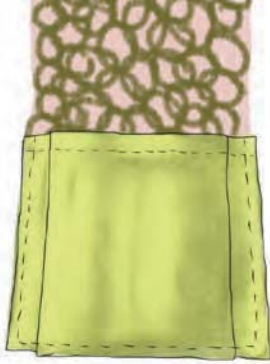
When working with canvas, don't let it sit in the hoop for too long to avoid hoop burn.

D



- Pin the two narrow base sides to the narrow bag ends; stitch.
- Press the lining upper raw edge $\frac{1}{2}$ " to the wrong side.
- Fold both Fabric-B narrow pockets in half along the foldline indicated on the pattern piece. Topstitch $\frac{1}{2}$ " from the fold along both pockets.
- Transfer the markings for the pleats using removable fabric marker. Fold the pocket along the pleat lines; clip in place **(D)**. The pleats are folded properly if they're as wide as the Fabric-A narrow bag side. Press the pleats in place.

E



- Place one Fabric-B pocket over one Fabric-A narrow-bag side. Align the lower edge and sides; pin, and then stitch $\frac{1}{4}$ " from the edges to secure the pocket to the bag side **(E)**. Repeat to attach the remaining pocket to the remaining narrow-bag side. Set the bag sides aside.

F



- Place one embroidered Fabric-C rectangle on a flat work surface. Place the pleated pocket pattern piece over the fabric, aligning the design placement marks.
- Cut the rectangle to size following the pattern. Repeat to trim the remaining embroidered Fabric-C rectangle.
- Pin one pleated pocket to one Fabric-B pleated pocket liner with right sides together, aligning the upper edges. Stitch the upper

edge. Repeat to stitch the remaining pleated pocket and liner.

- Press the seam allowances toward the liner, and then press the liner over the seam allowance, encasing the Fabric-C raw edge so the liner and pocket lower edges align.
- Transfer the pleat marks to the pocket right side. Fold the fabric along the pleats, clipping the pleats in place. The pleated pocket length should align with the Fabric-A wide-bag side. Press, and then repeat to pleat the remaining pocket.
- Pin one pleated pocket to one Fabric-A wide bag side. Stitch $\frac{1}{4}$ " from the sides and lower edge, attaching the pocket to the bag side. Stitch between each pocket, securing the pockets in place **(F)**. Repeat to stitch the remaining pocket to the remaining Fabric-A wide bag side.
- Using a removable fabric marker, draw a line 3" below the wide bag-side upper edge. Cut a piece of elastic to fit the bag side, and then pin it along the line.
- Stitch $\frac{1}{4}$ " from the wide bag-side edges, and then stitch across the elastic length above the pocket stitches to secure the elastic to the bag **(G)**. Repeat to attach the elastic to the remaining wide bag side and narrow bag sides.




Tip Proper pressing ensures proper pocket alignment.

- Following the previous lining instructions, stitch the wide bag sides to the narrow bag sides, creating a box. Stitch the bag base to the bag lower edges.
- Fold the upper edges ½" toward the wrong side; press.

FINISH

- Place the lining inside the bag exterior with wrong sides together. Align the side seams and corners.
- Using a removable fabric marker, mark directly above the pocket dividing lines along the bag

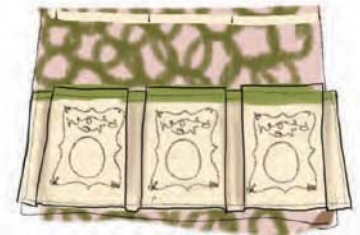
upper edge **(H)**. At each mark, pin 1" of the strap below the bag upper edge, aligning one strap side with the mark and ensuring the strap isn't twisted. Repeat to pin the remaining strap.

- Stitch ½" from the bag upper edge, catching the straps in the stitching. Stitch ¼" from the upper edge for a professional finish. 

DESIGN

Seed packets: Embroidery Library, Flower Seed Packets Design Pack—Small; emblibrary.com.

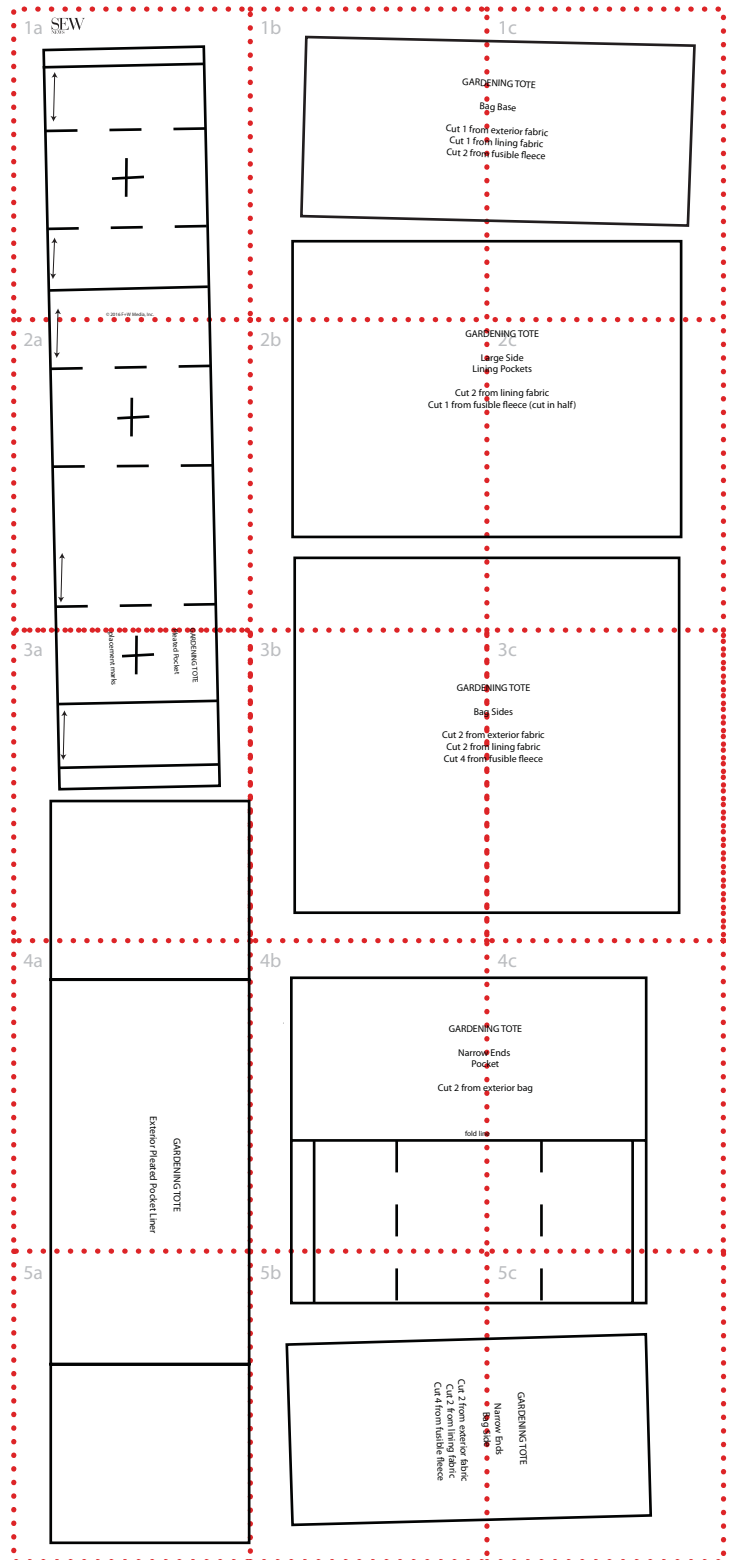
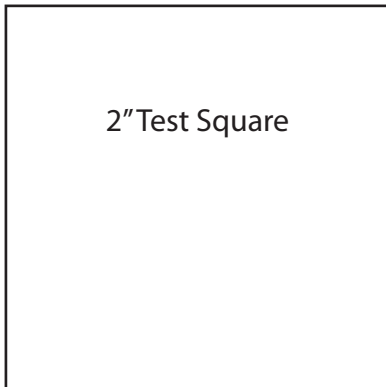
G

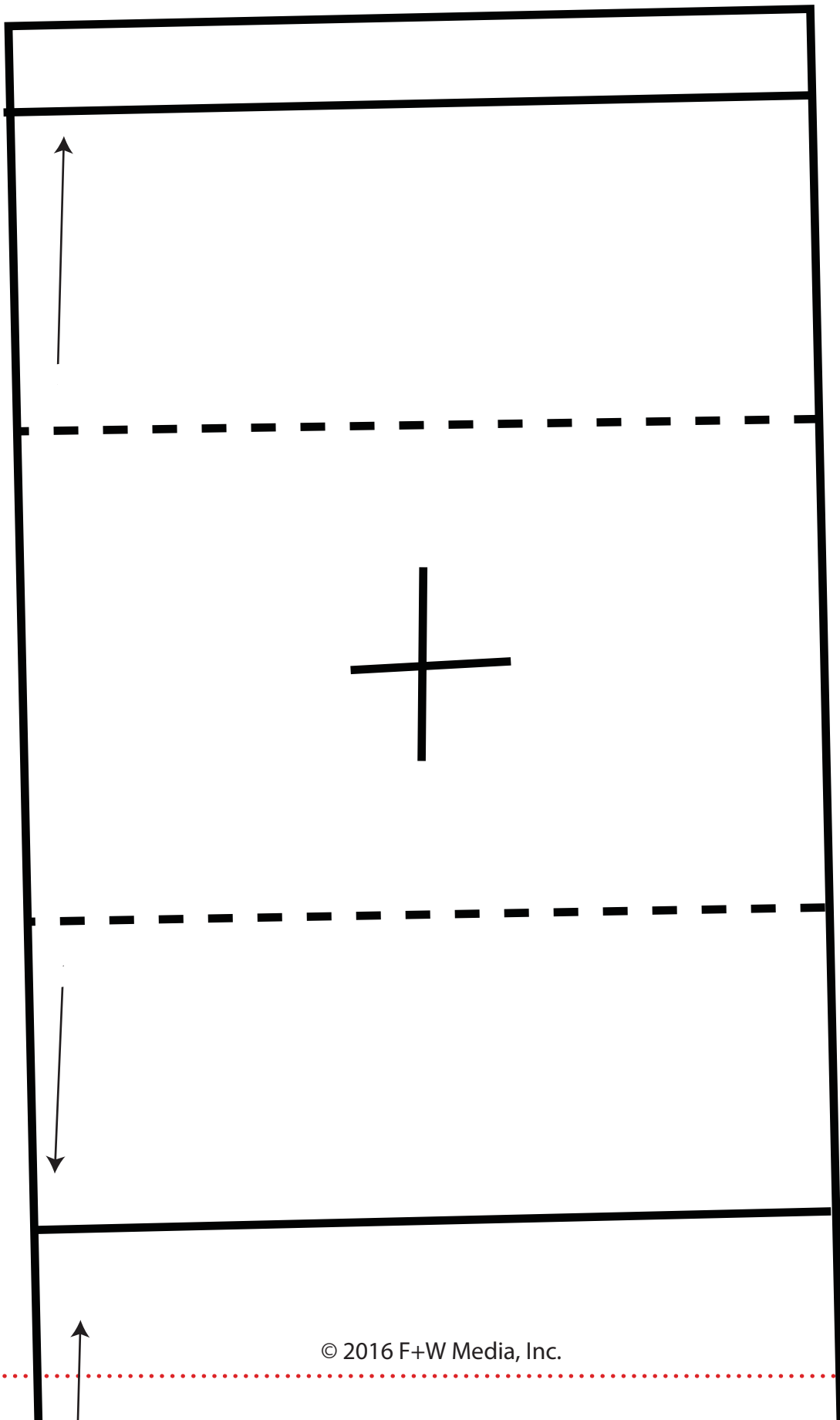


H



Gardening Tote ePattern Layout
Fifteen pages: 1a-1c, 2a-2c, 3a-3c, 4a-4c, 5a-5c.
Print this page first at 100%,
then measure test square before
printing full pattern





1b

GARDEN

Bag

Cut 1 from e

Cut 1 from

Cut 2 from f

1c

DENING TOTE

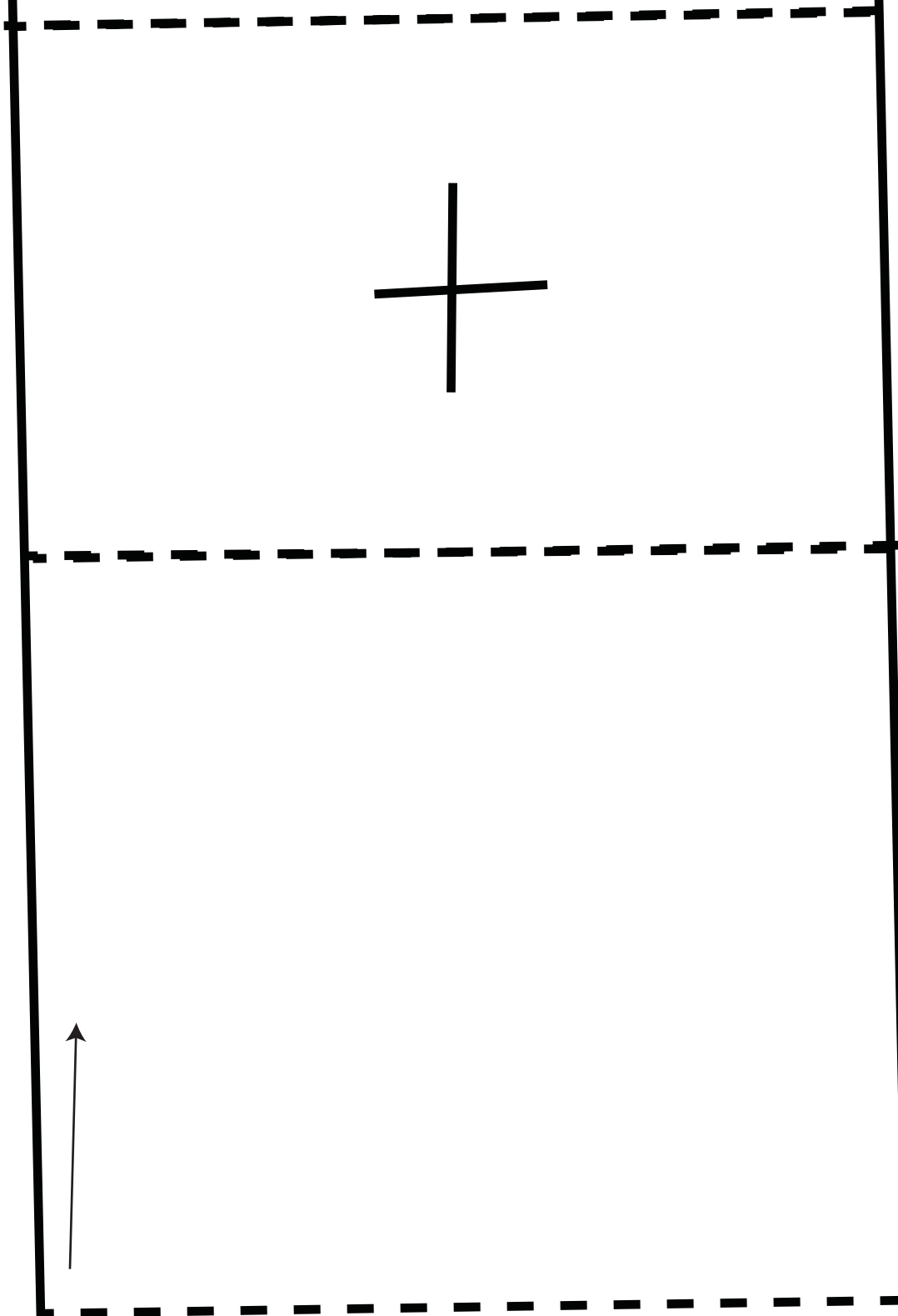
Bag Base

m exterior fabric

m lining fabric

m fusible fleece

2a



pl

ple

GAI

2b

GARDE

Large
Lining

Cut 2 from
Cut 1 from fusibl

GARDENING TOTE

2c

Large Side

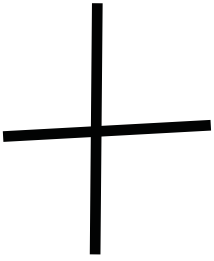
ing Pockets

from lining fabric

ible fleece (cut in half)

GARDENING TOTE

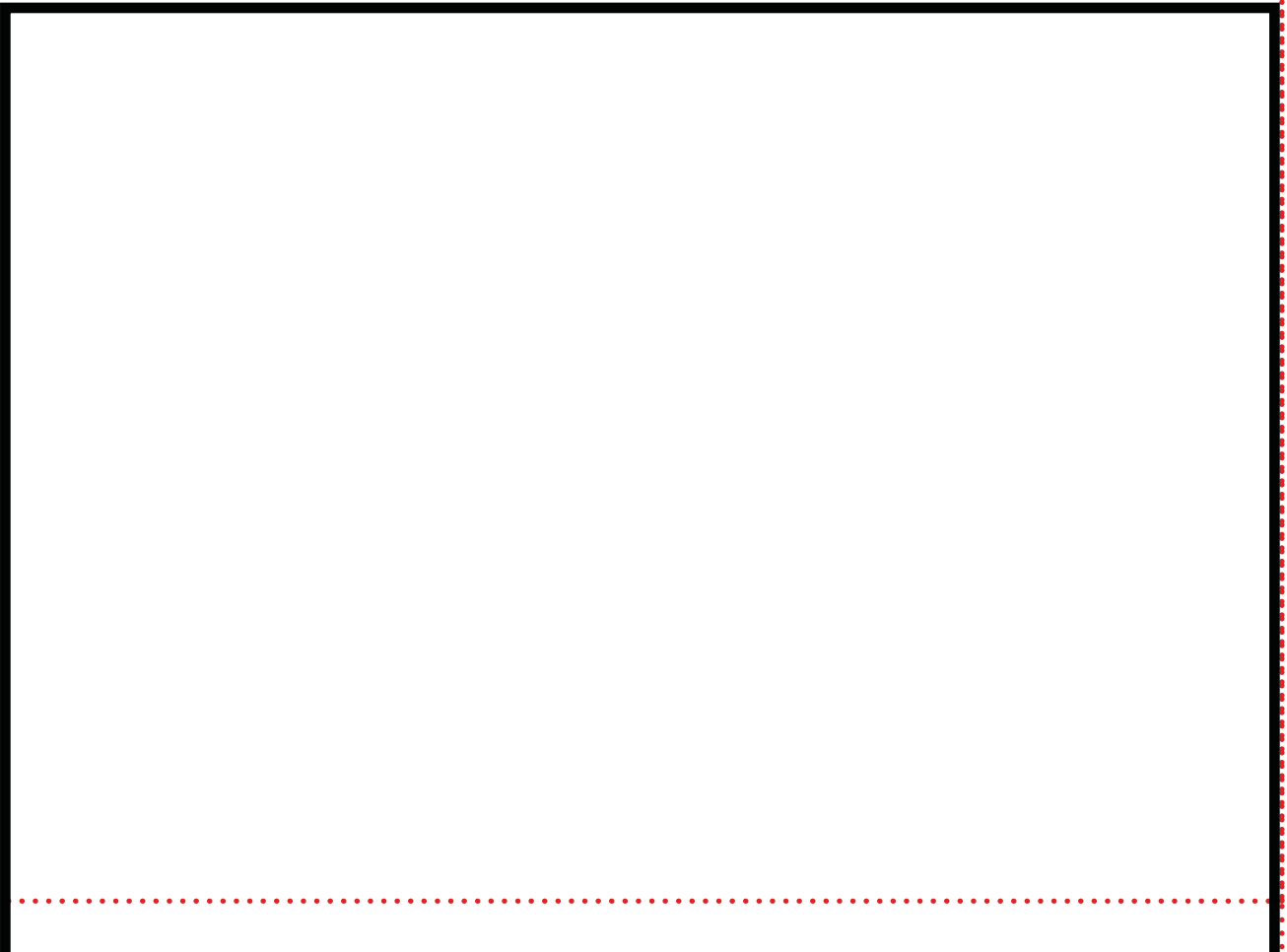
Pleated Pocket



placement marks



3a



3b

GARDEN

Bag S

Cut 2 from ex

Cut 2 from li

Cut 4 from fu

3c

ENING TOTE

ag Sides

m exterior fabric

m lining fabric

m fusible fleece

4a

GARDENING TOTE

Exterior Pleated Pocket Liner

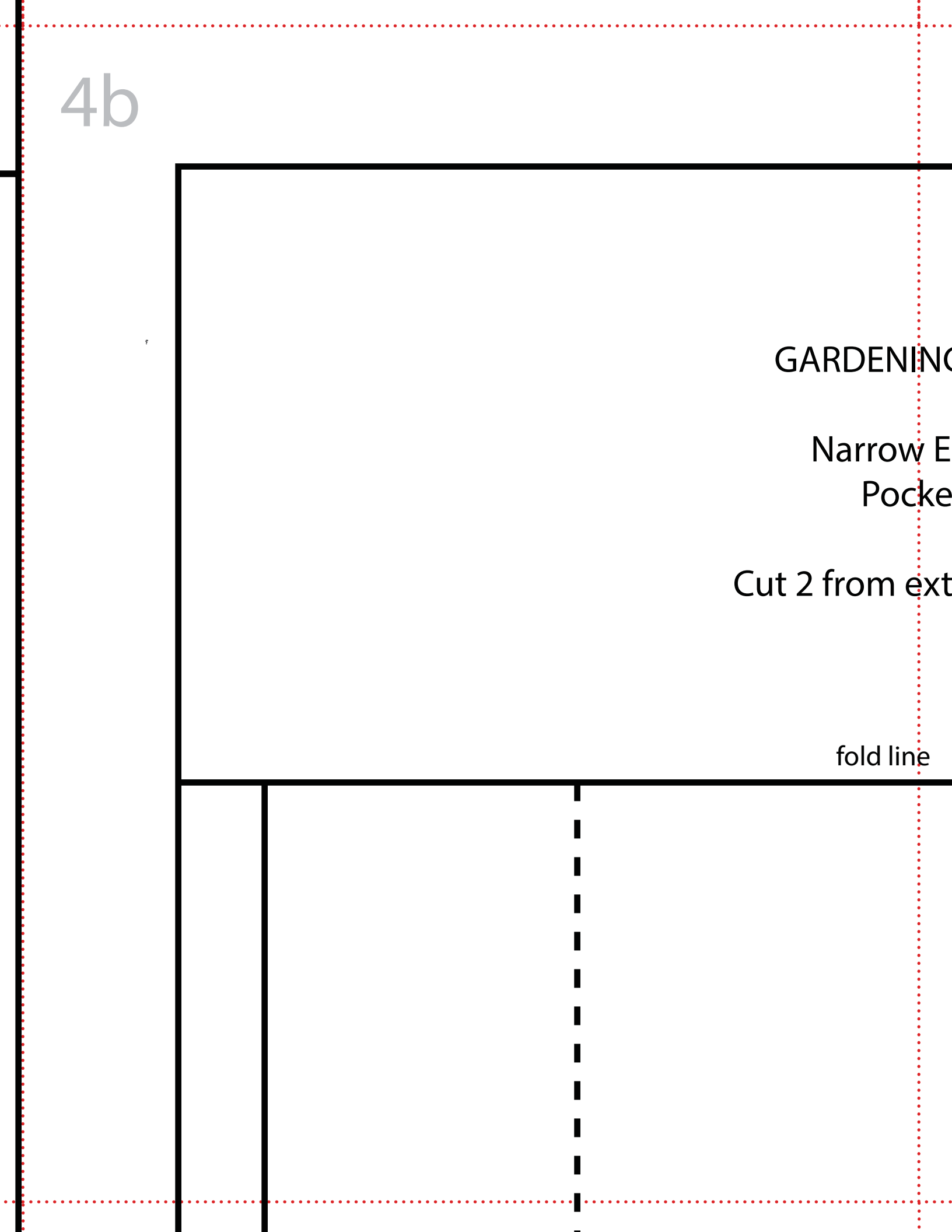
4b

GARDENING

Narrow E
Pocke

Cut 2 from ext

fold line



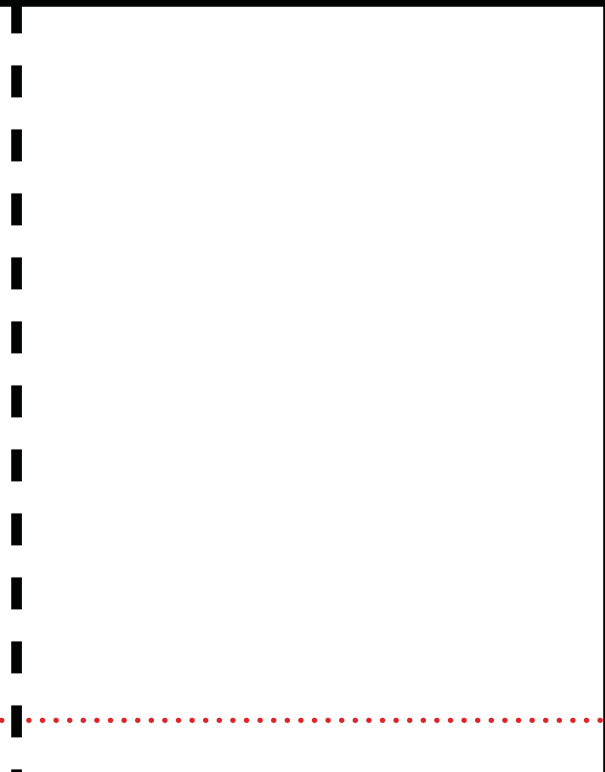
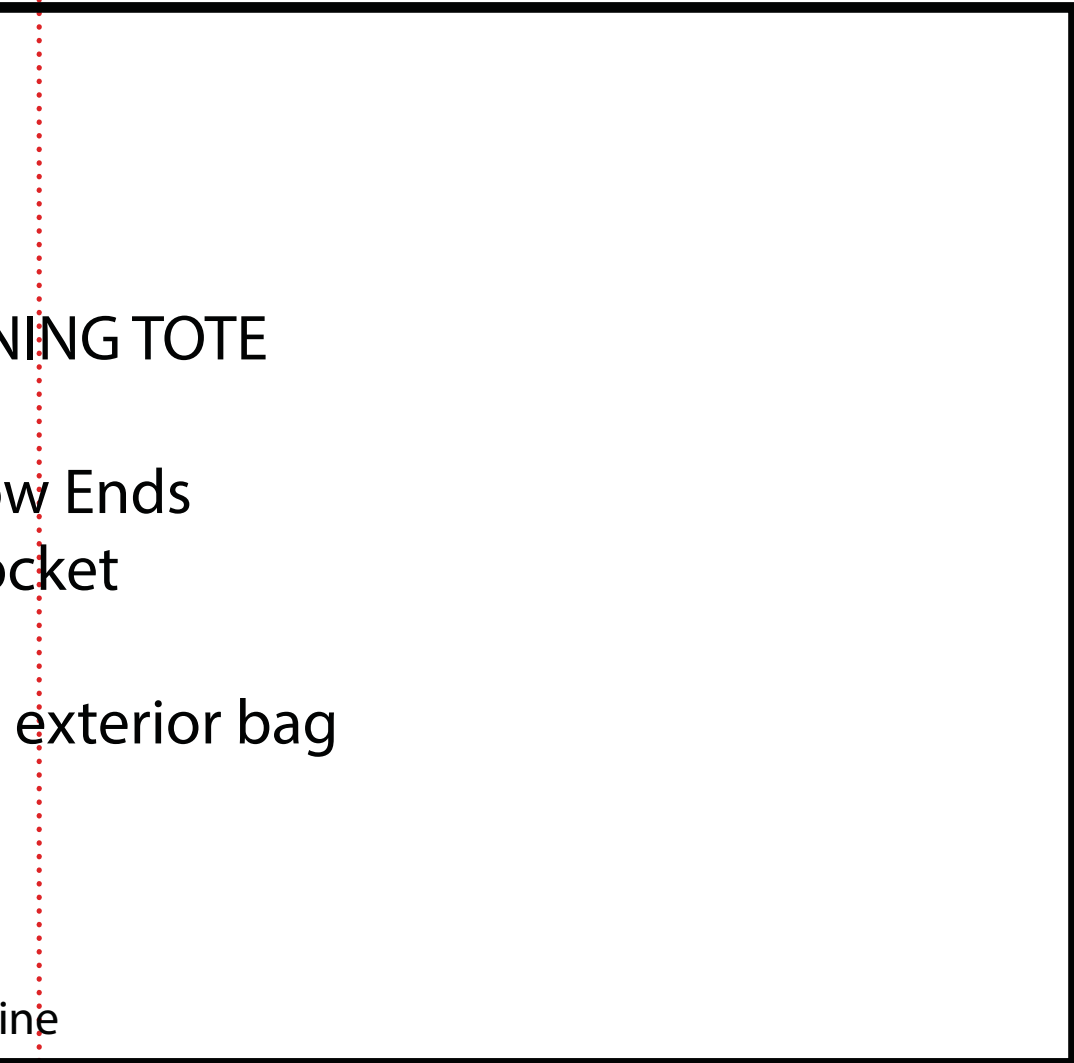
4c

NING TOTE

w Ends
ocket

exterior bag

ine



5a

Bag Side

Cut 2 from exterior fabric
Cut 2 from lining fabric
Cut 4 from fusible fleece

5b

5c

GARDENING TOTE

Narrow Ends

Bag Side

SEW

NEWS

The Trusted Sewing Source
ESTABLISHED IN 1980

MARITIME TOTE PATTERN



sewnews.com

| shopsewitall.com

Maritime

TOTE

A simple seamed tote with knotted rope handles makes this bag the perfect choice for a nautical outing.

BY JENNIFER DAVEY



**FIND THE
MARITIME TOTE
PATTERN** at
shopsewitall.com
after the
expiration date.

SUPPLIES

- ½ yard of natural canvas
- ¼ yard each of red & blue canvas
- ⅓ yard of cotton lining
- 2 yards of ½"-diameter cotton or hemp rope
- Eight size 24 (5/8") heavy-duty snap fasteners
- Fabric glue (See "Source.")
- Denim sewing machine needle
- Removable fabric marker
- Snap fastener setting tool
- Hammer

PREPARE

Download the Maritime Tote pattern from sewnews.com/web_extras for free until May 31, 2016. Print and cut out the pattern pieces.

CUT

From the natural canvas, cut four tote tops, on the fold.

From the blue canvas, cut one tote base and two exterior strips.

From the red canvas, cut two exterior strips.

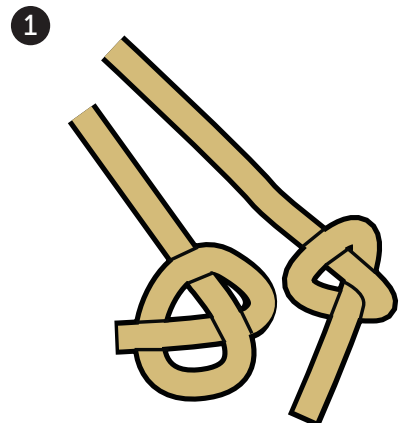
From the lining fabric, cut one tote base and two lining strips.



Cut the rope in half and tie a knot at each end, leaving a short tail. Apply fabric glue to the ends. Set aside to dry (1).

CONSTRUCT

With right sides together, stitch one natural tote top and one red exterior strip together along the natural lower edge and red upper edge. Stitch a blue exterior strip to the red lower edge; designate this piece as the tote front. Repeat to stitch the tote back.





Stitch the lining strip upper edge to one natural tote top lower edge with right sides together. Press the seams down. Topstitch the lining $\frac{1}{8}$ " from the seam. Repeat to stitch the lining back.

With right sides together, stitch the tote front to the tote back along the side seams.

Stitch the lining front and back right sides together along the side seams. Press open the seams.

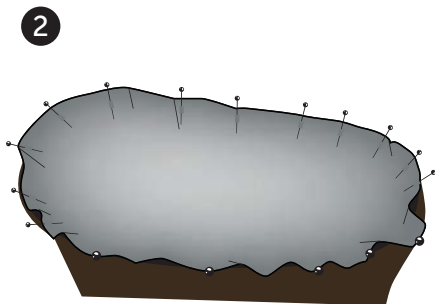
With right sides together, pin the tote base to the tote front and back, aligning the base notches with the side seams (2); stitch. Repeat to stitch the lining base, leaving a 4" opening along the front edge.

With right sides together, place the lining inside the tote, matching the side seams and curves. Stitch the upper edge using a $\frac{1}{4}$ " seam. Clip the curves and corners. Turn the tote right side out through opening. Press open the seam.

Set the snaps in place as marked on the pattern using the snap setting tool and hammer.

Position the rope handles and snap the tote top closed to secure the handles. 5

SOURCE
Thermoweb provided the Fabric Fuse Liquid Adhesive: thermowebonline.com



POCKET TALK

Follow these steps to create a hidden in-seam zipper pocket along the tote front.

CUT

From the lining fabric, cut two 4"x5" rectangles.

CONSTRUCT

Press open the zipper as directed on the zipper packaging.

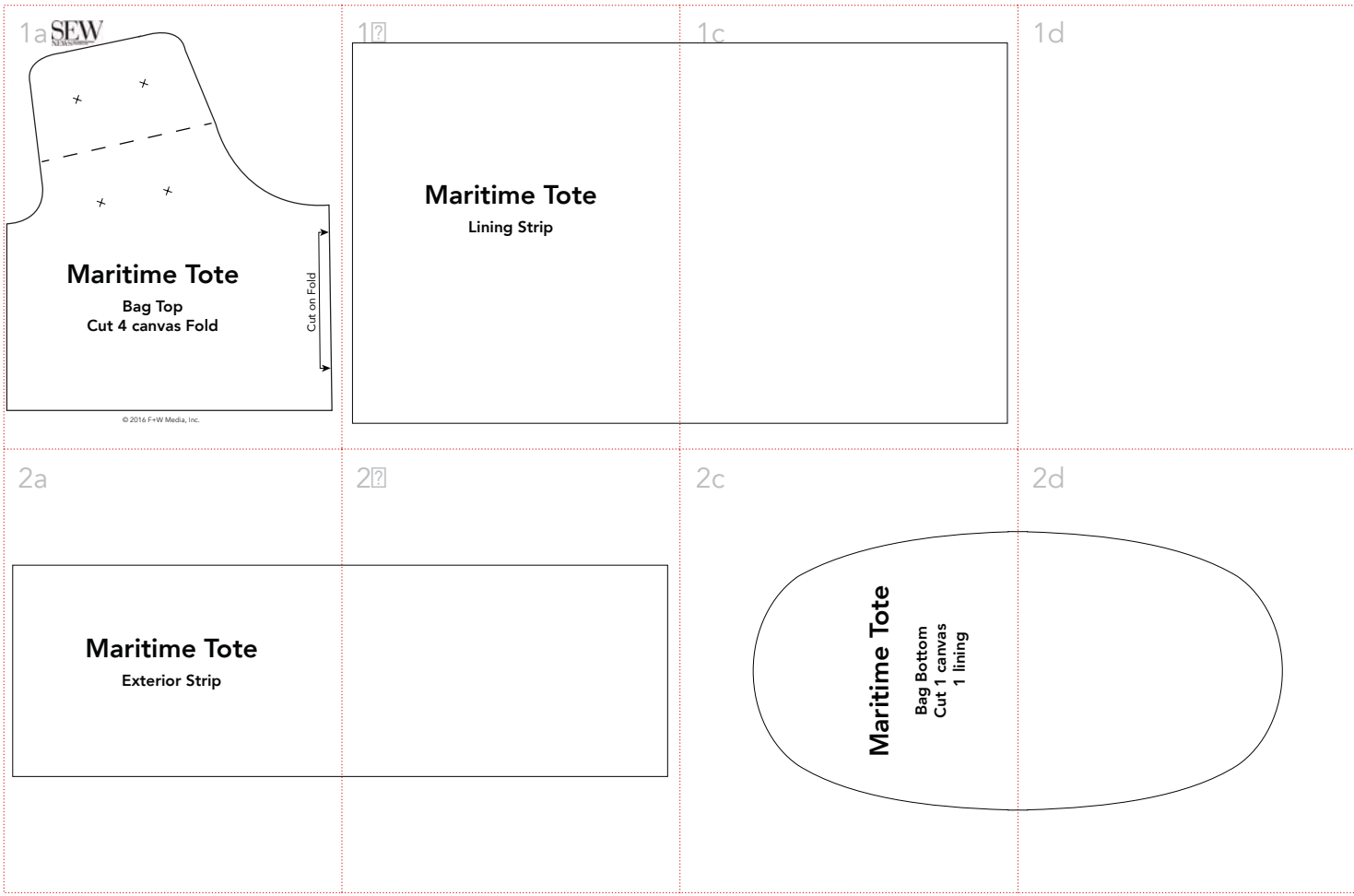
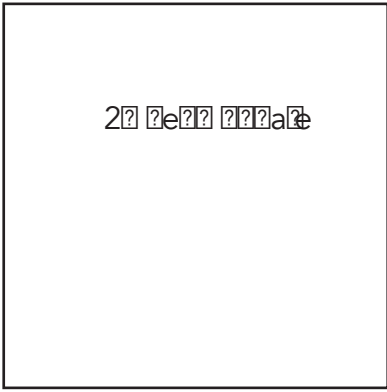
Using the invisible zipper foot, stitch the zipper to the natural tote top, beginning 3" from the left side edge. Repeat to stitch the opposite zipper tape to the red canvas piece. Trim off the excess zipper.

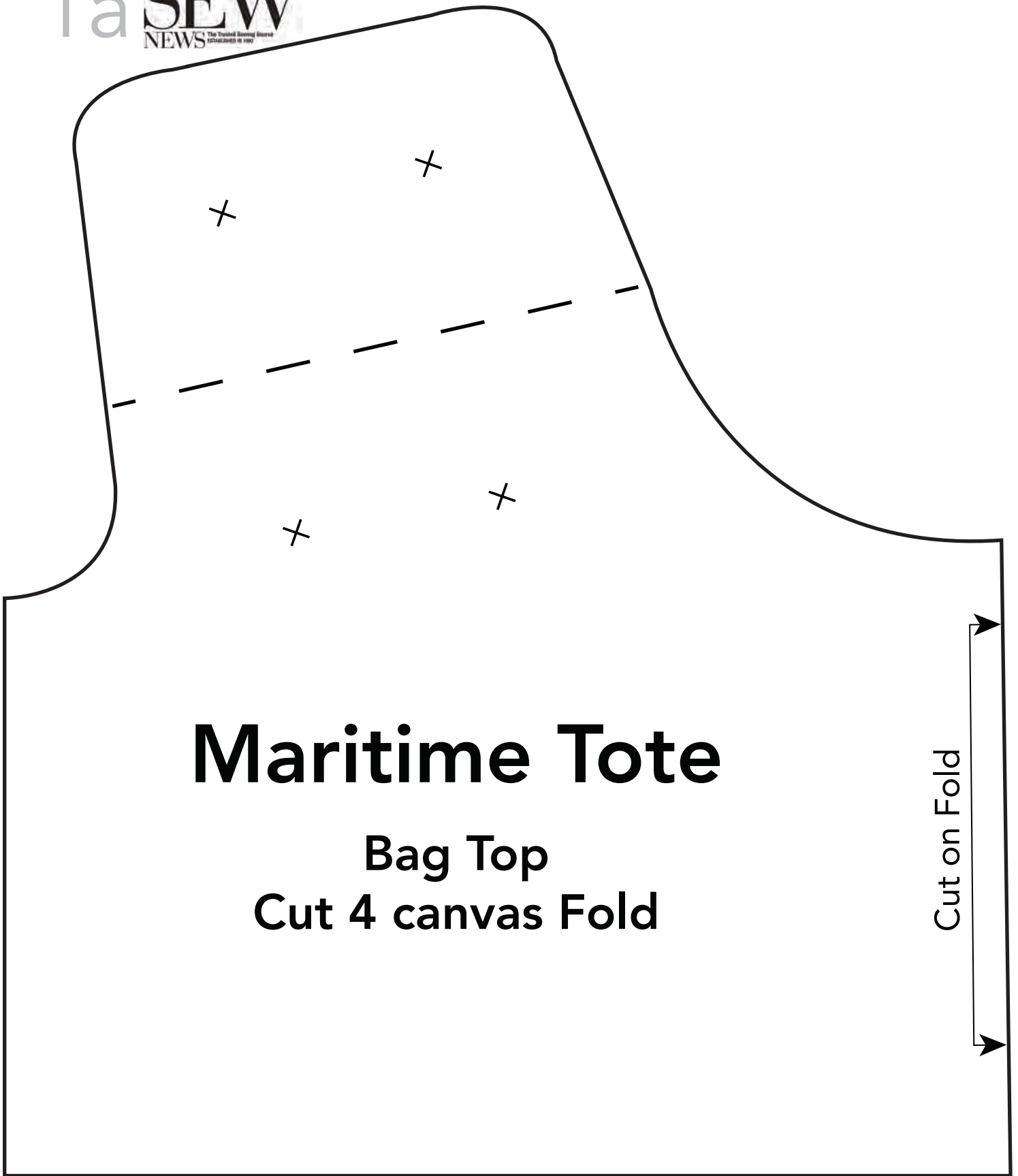
Using the standard zipper foot and beginning $\frac{1}{2}$ " from the edge, stitch a pocket piece to either side of the zipper seam allowance.

Stitch along the pocket rectangles open edges using a $\frac{1}{2}$ " seam allowance.

With the tote top and red canvas right sides together, stitch to complete the seam on either side of the zipper. Press open the seam open.

Maritime Tote e2a22e2a 2a2222
 2e2en 2a2e22 1a21c, 2a22d
 22in2 22i2 2a2e 2i222 a2 1002,
 22en 2ea222e 2e22 222a2 2e222e
 22in2in2 2222 2a22e2





Maritime Tote

Bag Top
Cut 4 canvas Fold

Cut on Fold

1 ?

Maritime Tote

Lining Strip

Cut 2 lining

1c

2a

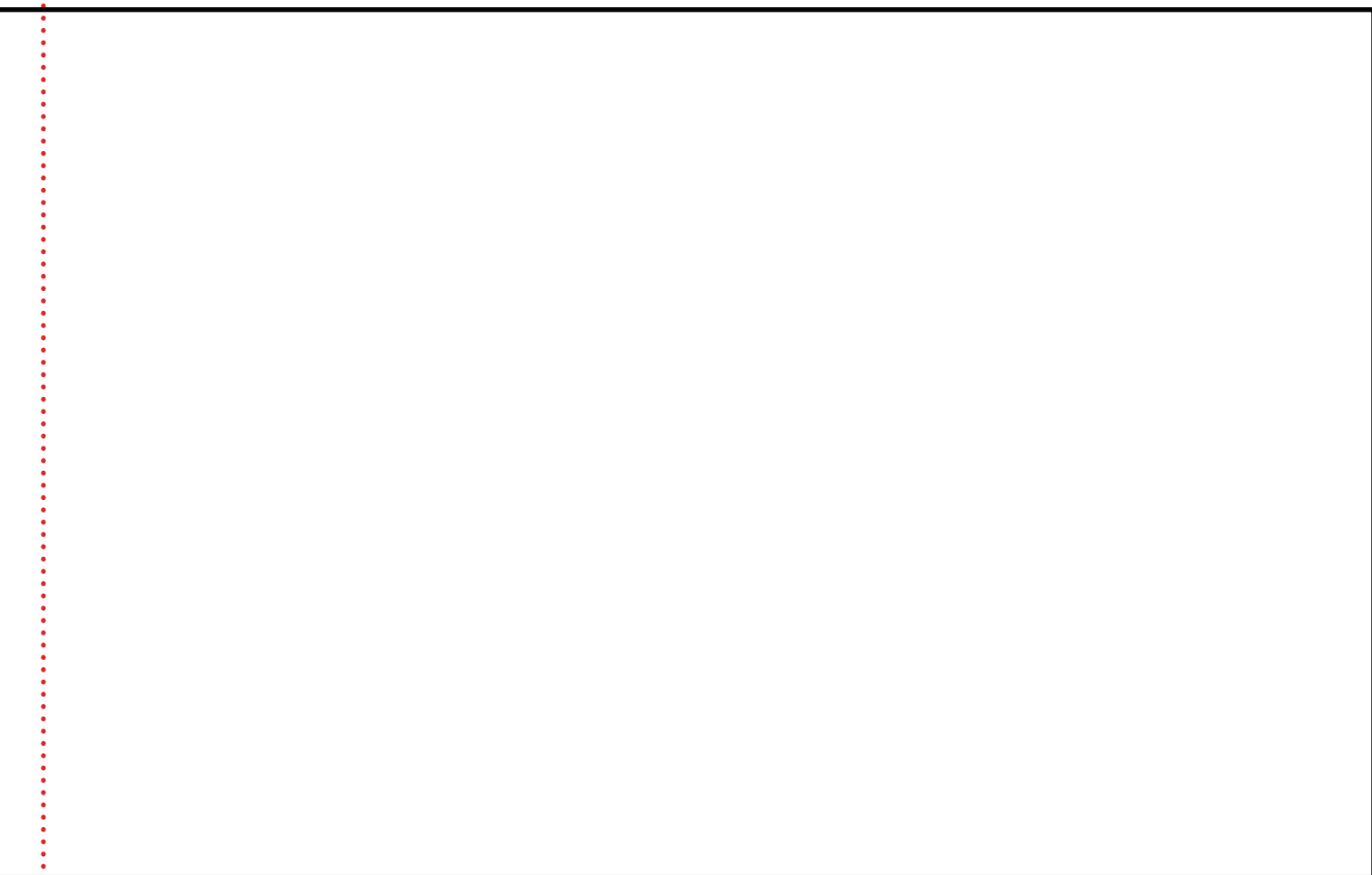
Maritime Tote

Exterior Strip

Cut 2 from red canvas

2 from blue canvas

2?



2c

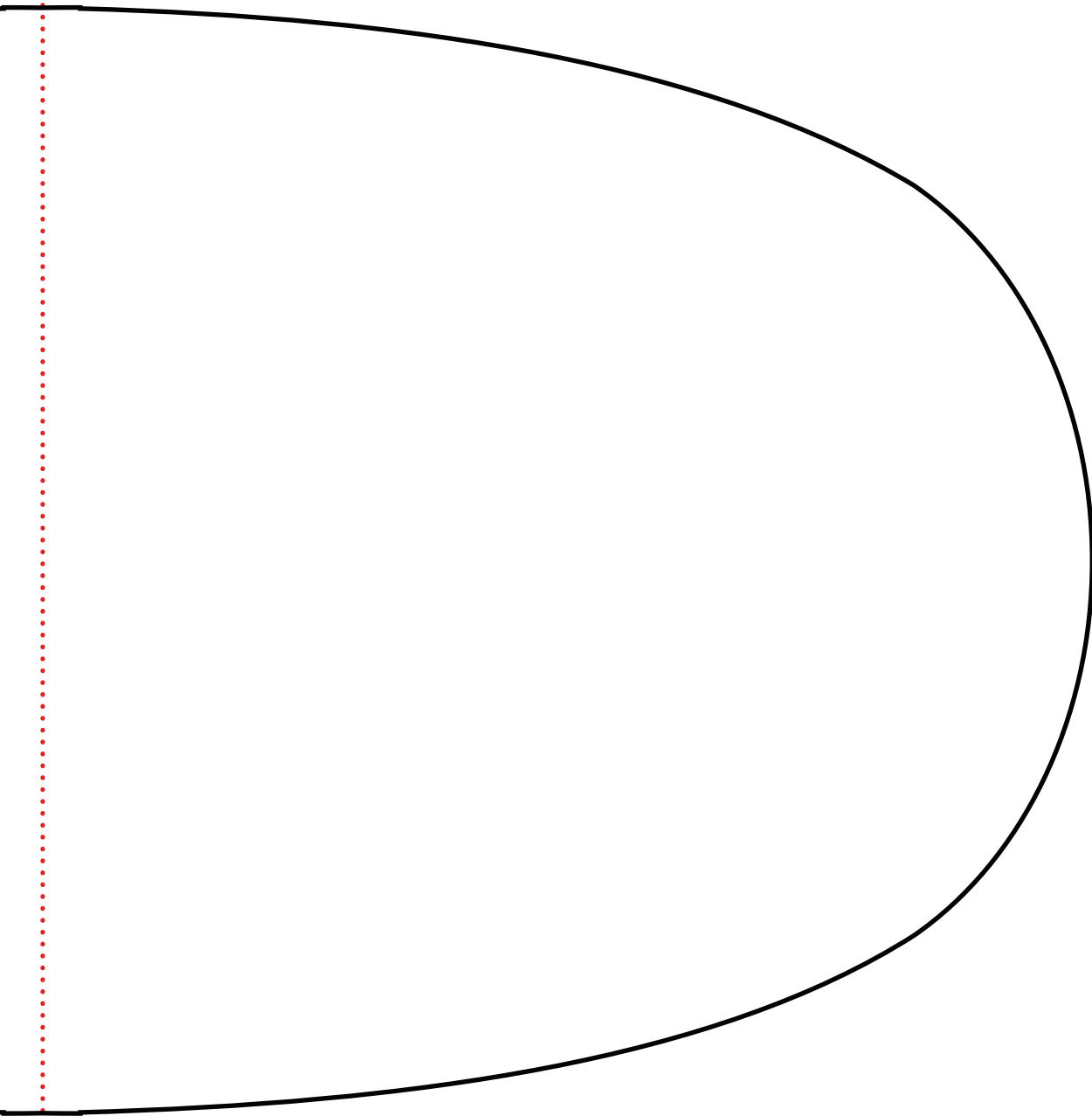
Maritime Tote

Bag Bottom

Cut 1 canvas

1 lining

2d



SEW NEWS PATTERN

SEW IT ALL

Do The
DUFFLE



sewnews.com | shopsewitall.com

Do The DUFFLE

by Ashley Briggs, courtesy of American & Efird

Bright fabrics add flair to a spacious duffel bag that's ideal for overnight or weekend excursions. Numerous zippered pockets inside and out keep your necessities well organized.



Watch Ashley make this bag on "Do The Duffle," episode 803 of *Sew it All*. Visit sew.tv or sewitall.com for more information.

SUPPLIES

1 1/2 yards each of 60"-wide print cotton fabric & solid color cotton fabric (lining)

Matching all-purpose thread (See "Source.")

Zippers: 26" separating, 9" invisible & 9" standard (See "Source.")

Removable fabric marker

Hand sewing needle

10"x21" rectangle of heavyweight fusible interfacing (optional)

PREP IT

Download the **Do The Duffle pattern** at sewitallmag.com; cut out.

From the print cotton fabric, cut one base, two front and back panels, two sides, two upper panels and two handles.

From the lining fabric, cut one base, two front and back panels, two sides, two upper panels, two handles, four pockets and four tabs.

SEW IT

Use 1/2" seam allowances.

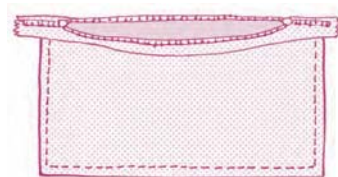
Set the machine to a 4mm straight stitch. With right sides together, align two pocket rectangles. Stitch one long edge, leaving a long thread tail at the end. Press open the seam.

Center the invisible zipper right side down over the pocket-seam wrong side; pin. Using a zipper foot, stitch close to the teeth along each zipper tape. Remove the basting stitches.

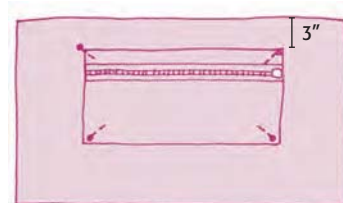
Open the zipper 3". With right sides together, align the pocket sides. Align one pocket lower edge 1" above the other. Stitch the sides and lower edge; press open the seams. Turn the pocket right side out through the zipper (1).

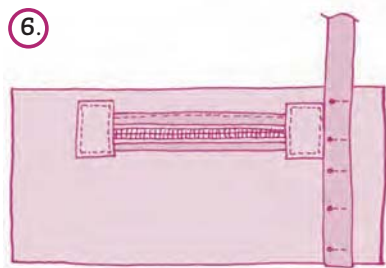
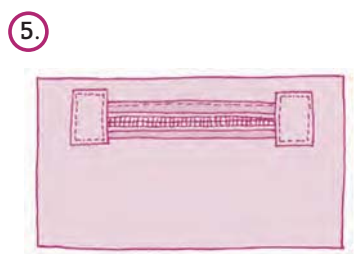
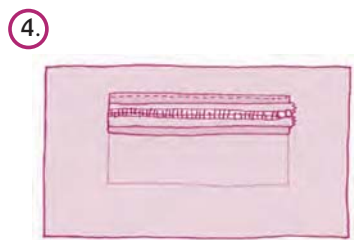
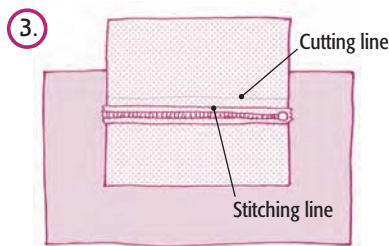
Center the zipper pocket over one lining-front panel right side 3" from the upper edge; pin (2). Edgestitch the perimeter.

1.



2.





Place the outer-fabric front panel right side up. Draw a centered 10" line 3" from the upper edge. Draw a second line $\frac{1}{2}$ " below the first. Mark the upper line as the cutting line and the lower line as the stitching line.

With right sides together, center the standard zipper along one pocket-rectangle long edge. Using a zipper foot, stitch close to the zipper teeth. Repeat to attach the opposite zipper tape side to the remaining pocket rectangle. Press the seams toward the pockets.

With right sides together, align the upper zipper tape edge with the stitching line; pin (3). Stitch over the stitching line, just above the zipper tape edge. Using scissors or a rotary cutter, cut along the cutting line.

Push both pocket pieces through the opening, leaving the zipper and $\frac{1}{2}$ " of fabric on either side exposed; press.

Edgestitch the pocket upper fold, using a decorative stitch, if desired (4).

With wrong sides together, stitch the pocket sides and lower edge. Trim the pocket lower edges even.

Align two tabs with right sides together. Stitch the perimeter, leaving a centered 1" opening for turning. Clip the corners, and then turn the tab right side out, folding the opening seam allowances $\frac{1}{2}$ " toward the wrong side; press. Repeat to construct the remaining tab.

On the bag front, center one tab over each pocket-zipper end, covering the raw edges; pin. Edgestitch each tab perimeter (5).

Trim the 26" zipper to 20 $\frac{1}{2}$ ", trimming from the zipper end. With right sides together, align one zipper straight edge with one outer-fabric upper-panel long edge. Align the trimmed zipper edge with the fabric raw edge and the remaining zipper end $\frac{1}{2}$ " from the edge; pin. Using a zipper foot, stitch close to the zipper teeth.

Repeat to attach the opposite zipper tape to the remaining upper panel. Press the seams toward the upper panels.

Repeat to attach the remaining upper panel to the back panel.

With right sides together, align one bag strap with one lining strap. Stitch each long edge, leaving the short edges open for turning. Turn the strap right side out; press. Repeat to stitch the remaining strap.

With the lining fabric side up, align one strap end with the outer-front lower edge and the strap long edge with the tab edge; pin (6).

Repeat for the opposite strap end, ensuring the strap isn't twisted.

Select a blanket stitch on the machine. Edgestitch each strap long edge, beginning at the lower edge and ending at the front/upper panel seam.



Repeat to attach the remaining strap to the back, ensuring the straps are the same distance from the outer raw edges as on the front.

With right sides together, align one outer-side panel with each outer-base short end; pin. Stitch the sides to the base, beginning and ending stitching $\frac{1}{2}$ " from each edge; press the seams toward the base (7).

With right sides together, align one outer-fabric upper panel with each front and back upper edge; pin. Stitch, beginning and ending $\frac{1}{2}$ " from each edge; press the seams toward the front and back.

With right sides together, align the front long raw edge with one base long edge; pin. Stitch, beginning and ending $\frac{1}{2}$ " from each edge; press the seams toward the base. Repeat to attach the back to the opposite base long edge.

With right sides together, align each side panel edge with the front and back short edges; pin. Stitching, beginning and ending $\frac{1}{2}$ " from each edge; press open the seams (8).

Repeat to construct the lining.

Turn the outer bag wrong side out. With right sides together, insert the lining into the outer bag, match-

ing all seams, corners and edges. Align the side-panel upper edges; pin.

Align the upper-panel short edges; pin. Beginning along the upper-panel, stitch along the pinned edges, beginning and ending $\frac{1}{2}$ " from each zipper and pivoting at the upper/side panel corner (9).

Repeat to stitch the opposite side, and then turn the bag right side out.

If adding stiff interfacing to the bag base, insert the rectangle between and the bag lining. If needed, hand tack the interfacing to the base at the corners to secure.

FINISH IT

Fold each lining upper-panel raw edge $\frac{1}{2}$ " toward the wrong side. Align the folded edge with the zipper tape wrong side next to the zipper teeth; pin.

With the outer bag facing up, topstitch each upper panel $\frac{1}{8}$ " from the edge, catching the lining fold in the stitching. Press the stitched sides and upper edges.

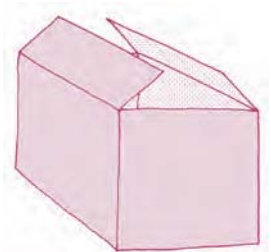
Using a hand sewing needle, tack the lining and outer-bag lower corners together. ✚

SOURCE
American & Efird provided the sewing thread and zippers:
amefird.com.

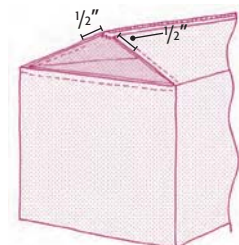
7.



8.



9.



Do the Duffle
Base
Cut 1 from fabric.
Cut 1 from lining.

Cut on the fold.

Do the Duffle
Front & Back
Cut 2 from fabric.
Cut 2 from lining.

Cut on the fold.

Place on fold.

Do the Duffle
Strap
Cut 2 from fabric.
Cut 2 from lining.

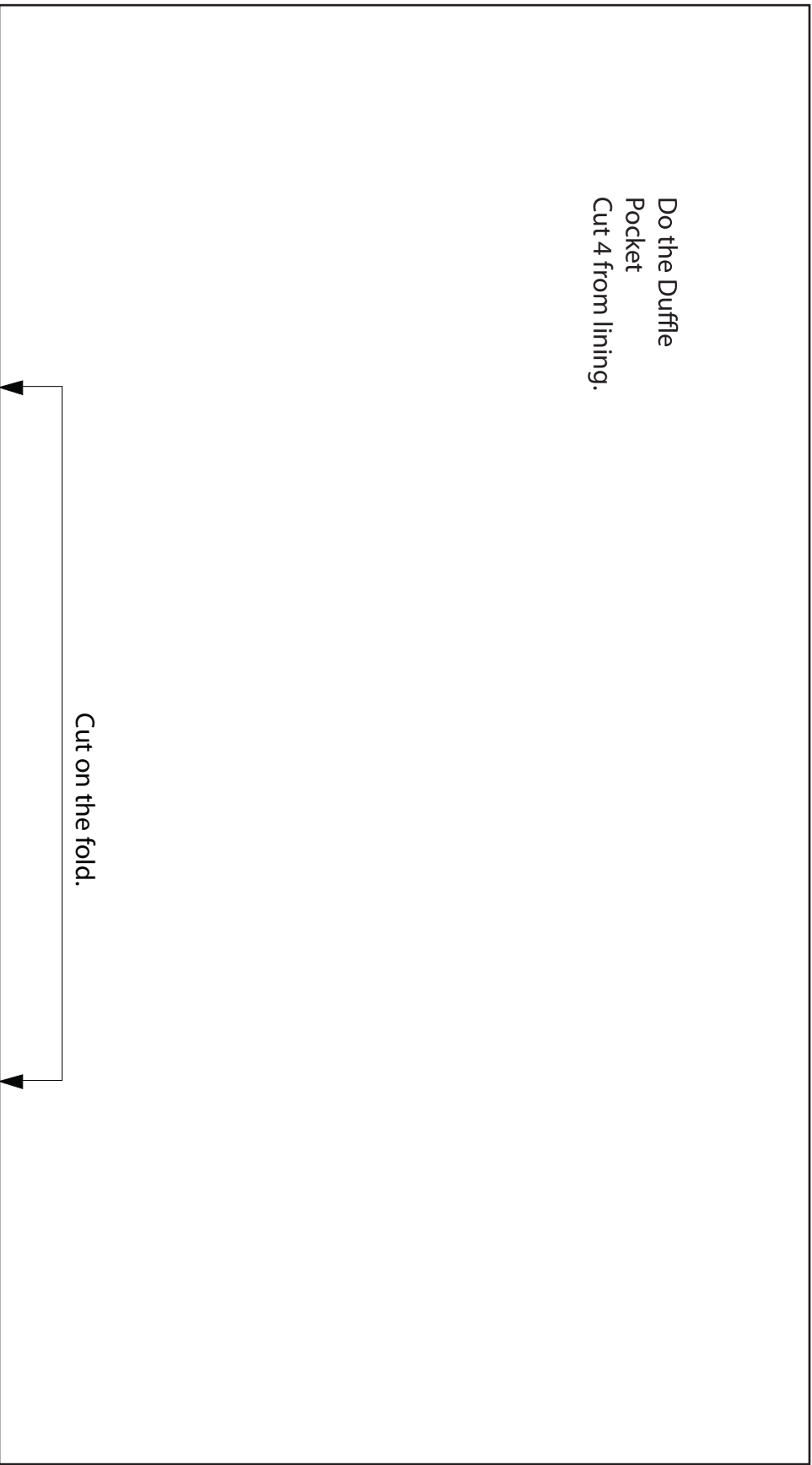
Do the Duffle
Upper Panel
Cut 2 from fabric.
Cut 2 from lining.

Cut on the fold.



Do the Duffle
Pocket
Cut 4 from lining.

Cut on the fold.



Do the Duffle
Side
Cut 2 from fabric.
Cut 2 from lining.

Cut on the fold.

Do the Duffle
Tab
Cut 4 from lining.

sewNEWS PATTERN

SEW IT ALL

BELT

Bag

Fanny Pack

sewnews.com

|

shopsewitall.com



BELT Bag

by Nicki LaFolle

Free up your hands and still carry all your essentials in a stylish hip bag.

SUPPLIES

½ yard of canvas

¼ yard of coordinating cotton lining fabric

Matching all-purpose thread

12"-long all-purpose zipper

1"-wide D-ring set

Hand sewing needle

CUT IT

Download the Belt Bag pattern from sewitallmag.com; cut out. Cut out the fabric pieces according to the pattern.

Measure your hip circumference where the bag will be worn; record.

From the canvas, cut one strap rectangle measuring 4" x the hip measurement.

SEW IT

Use ½" seam allowances unless noted otherwise.

Fold the pocket in half lengthwise with right sides together. Stitch the sides and lower edge, leaving a centered opening along the lower edge for turning. Clip the corners, and then turn the pocket right side out. Press the opening seam allowances ½" toward the wrong side.

With right sides together, align the flaps; pin. Stitch the sides and upper edges using a $\frac{1}{4}$ " seam allowance. Clip the corners, and then turn the flap right side out through the long open edge; set aside.

Fold the tab and strap in half lengthwise with wrong sides together; press, and then unfold. Fold each long edge to meet at the center fold; press. Fold one strap short edge $\frac{1}{2}$ " toward the wrong side; press. Refold the tab and strap along the center foldline; edgestitch the open edges.

Wrap the tab around the D-ring set, aligning the raw edges; pin. Stitch as close as possible to the D-rings. Install a zipper foot onto the machine if necessary.

With the right sides facing up, center the zipper over the lining upper pocket, aligning the upper edges. Place the main upper pocket wrong side down over the zipper, sandwiching it; pin.

Install a zipper foot onto the machine. Move the zipper pull to the zipper center. Stitch through all layers as close as possible to the zipper teeth. When you reach the zipper pull, end stitching and remove

the fabric from the machine. Move the zipper pull out of the way and continue stitching. Press the fabric upward.

With the right sides facing up, center the zipper over the lining lower pocket, aligning the edges. Place the main upper pocket wrong side down over the zipper, sandwiching it (1).

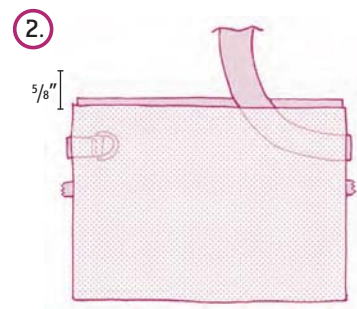
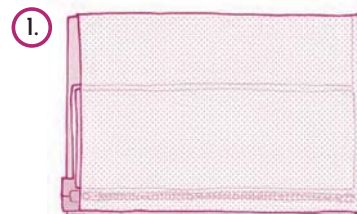
Stitch through all layers as close as possible to the zipper teeth, moving the zipper pull per the previous instructions. Press the fabric downward.

With right sides facing up, align the zipper pocket over the lining body panel; pin.

With right sides facing up, center the pocket over one canvas body panel $2\frac{1}{2}$ " from the upper edge; pin. Edgestitch the pocket sides and lower edge, backstitching at the pocket upper edges to secure and closing the opening with the stitching. Topstitch the pocket vertical centerline from the upper edge, backstitching to secure.

With right sides together, align the inner-pocket panel with one canvas body panel. Stitch the sides and lower edge; press open the seams.

With right sides together, align the zipper-pocket panel with the remaining canvas body panel. Sandwich the tab and strap along opposite sides between the layers and $\frac{5}{8}$ " from the upper edge, aligning the raw edges (2).

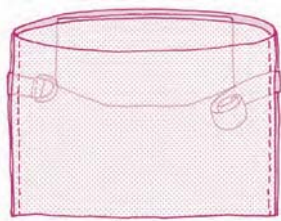




(TIP)

Use quilting cotton instead of canvas to create a lighter-weight bag.

3.



Stitch the sides and lower edge; press open the seams. Trim the zipper tape even with the seam allowances.

Flatten each lower corner, aligning the side and lower seams. Measure $\frac{1}{2}$ " along the seam; mark. Draw a line across the corner perpendicular to the seam at the mark; stitch along the line. Trim $\frac{1}{4}$ " from the stitching line. Repeat to box the remaining lower corner and the each inner-bag lower corner.

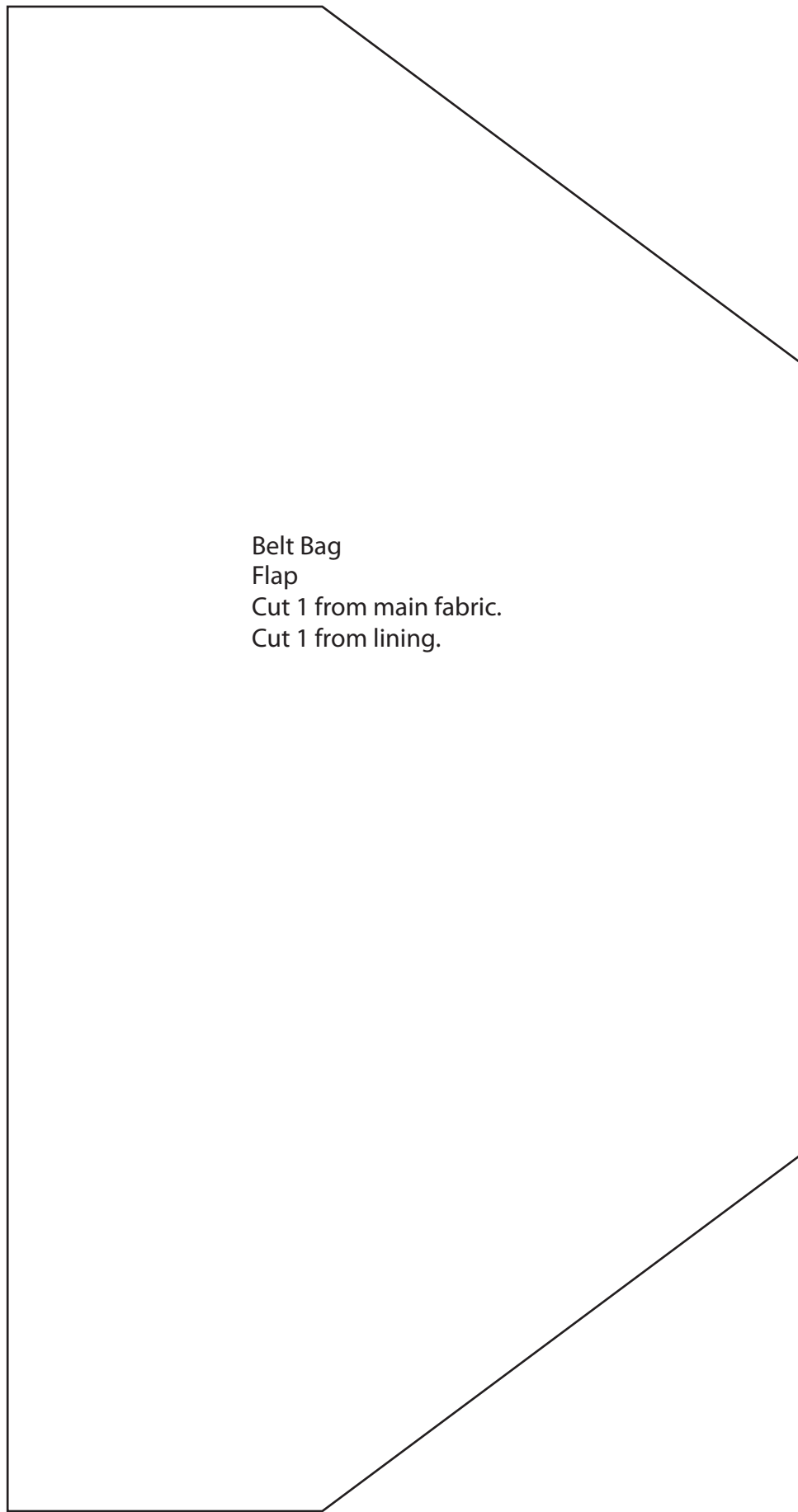
With right sides together, insert the inner bag into the outer bag, matching the side seams and upper edges. Roll up

the strap to ensure it doesn't get caught in the stitching. With the flap lining facing the inner bag, sandwich the flap between the bag layers, aligning all raw edges; pin (3).

Stitch the bag upper edge, leaving a 5" centered opening along the bag front.

Turn the bag right side out. Insert the inner bag into the outer bag. Press the upper edge, folding the opening seam allowances toward the wrong side.

Slipstitch the opening closed. ☘



Belt Bag
Flap
Cut 1 from main fabric.
Cut 1 from lining.

Belt Bag
Pocket
Cut 1 from lining.

Belt Bag
Upper Pocket
Cut 1 from main fabric.
Cut 1 from lining.

Belt Bag
Lower Pocket
Cut 1 from main fabric.
Cut 1 from lining.

Belt Bag
Body
Cut 3 from main fabric.
Cut 1 from lining.

SEW
NEWS

SEW iT ALL
PATTERN

Towel Toter Bag



sewnews.com | shopsewitall.com



Towel Toter

by Linda Permann;
sample sewn by Ellen March

Create this roomy tote to hold all of your beach necessities, including your towel.

SUPPLIES

1 ¼ yards each of heavyweight canvas, mediumweight lining fabric & mediumweight fusible interfacing.

Pair of 8"-wide bamboo oval or circular handles

Matching all-purpose thread

Hand sewing needle

PREP IT

Download the Towel Toter pattern at sewitallmag.com; cut out and tape together, following the grid lines.

Cut two bags each from the canvas, lining and interfacing. Trim the interfacing bags ½" from the perimeter.

Center one interfacing bag over one canvas bag wrong side; fuse, following the manufacturer's instructions. Repeat to add interfacing to the remaining canvas bag.

SEW IT

Use ½" seam allowances.

With right sides together, pin the canvas bags along the sides and lower edge; stitch (1). Repeat to pin and stitch the lining bags along the sides and lower edge.

Clip the lining lower-edge curve. Turn the lining right side out; press.

With right sides together, place the lining inside the bag. Align the bag and lining upper edges; pin. Stitch the upper edge, leaving an opening between one handle edge and the opposite handle edge (2).

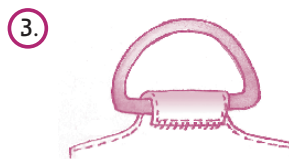
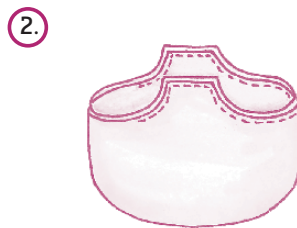
Turn the bag right side out through the opening; press. Press the opening edges $\frac{1}{2}$ " toward the wrong side; press.

Topstitch the bag upper edge, closing the opening with the stitches.

Fold one handle tab around one handle with lining sides together, folding

the tab $\frac{1}{2}$ " toward the lining side; pin. Hand stitch the handle-tab edge to the lining fabric only (3). Repeat to attach the remaining handle to the opposite handle tab.

Turn the bag inside out. Hand stitch the lining corners to the canvas corners along the seam allowance. ⚡



Flower Power

Stitch a cute flower pin to adorn the bag or your beach cover-up.

Supplies

3"x45" strip of light- to mediumweight fabric

1"-diameter button

Coordinating embroidery floss

Hand embroider needle

Safety pin or pin back

Sew It

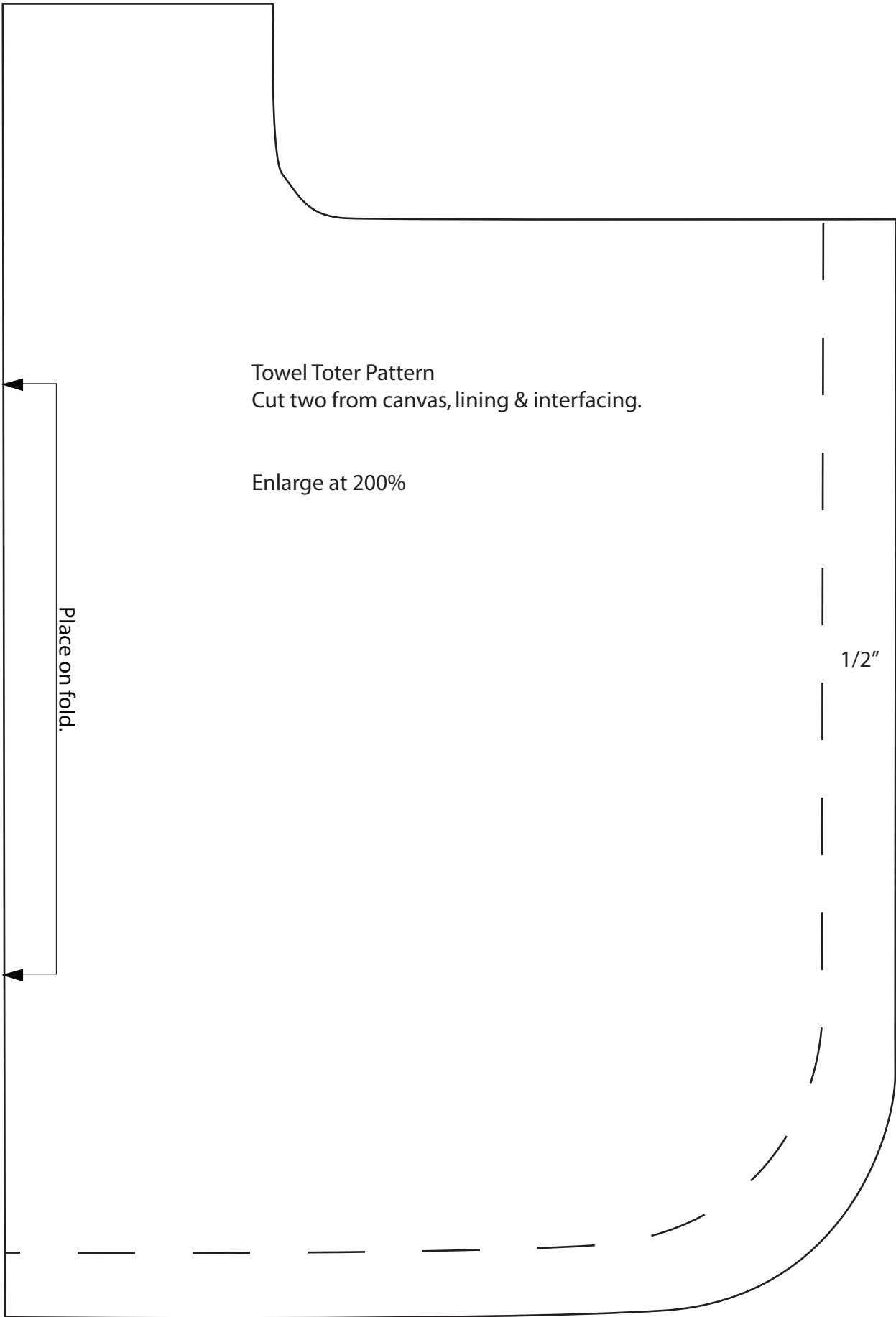
Freehand cut large scallops along one strip long edge. Stitch a long gathering or basting stitch along the opposite long edge, leaving long thread tails.

Gently pull the thread tails to gather the strip, coiling it into a flower shape.

Thread the embroidery needle with three strands of embroidery floss. Hand stitch the fabric layers together along the flower center.

Position the button at the flower center. Hand stitch the button in place. Knot the floss ends along the flower back.

Use a safety pin or pin back to attach the flower to the bag.



Towel Toter Pattern
Cut two from canvas, lining & interfacing.

Enlarge at 200%

Place on fold.

1/2"