



**Make It You** brings the excitement and fun of sewing to the newest generation.

A QUICK PROJECT

# techno tote

SHANNON MULLEN

Your laptop is headed for the lap of luxury when tucked away in this padded and embellished carrying case.





## WHAT YOU'LL NEED

### Fabric

- ½ yard of solid-color wool
- ¾ yard of 45"-wide print fabric
- Scraps of silk doupioni

### Other

- Yarn remnants
- ½ yard of fusible fleece
- Needle-punching machine or hand-felting tools
- Thread: all-purpose, gold metallic
- Rotary-cutting tools

## Cutting

**From the wool** cut one 15"x23" rectangle (body) and one 14"x15½" rectangle (flap).

**From the print fabric** cut four 3"x10" rectangles (sides), one 6"x44" rectangle (strap), one 15"x23" rectangle (lining) and one 14"x15½" rectangle (flap lining).

**From the fusible fleece** cut one 15"x23" rectangle (body), one 15"x16½" rectangle (flap) and two 3"x10" rectangles (sides).

## Construction

**Use a steam iron to fuse** the fusible fleece to the wrong side of the corresponding body, side and flap pieces (not the lining pieces).

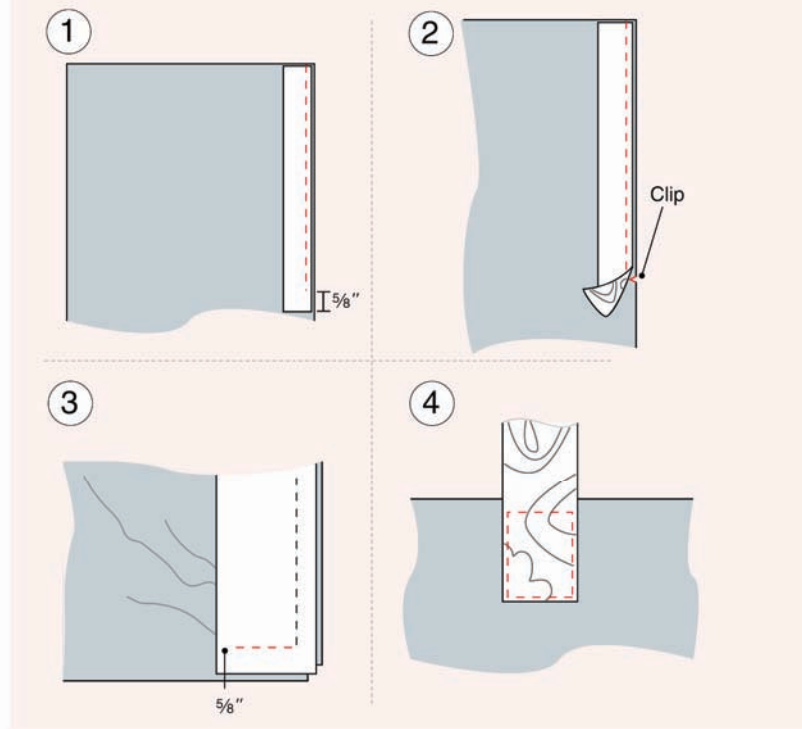
**To embellish the bag flap**, arrange silk and yarn pieces on the flap right side. Use a needle-punching machine or hand-felting tools to felt the silk and yarn into the wool. Add decorative stitching as desired (see photo for placement ideas).

**Trim the flap** and any excess fleece to 14"x15½". Place the flap and flap lining pieces right sides together. Designate one long edge as the upper edge. Using a ⅝" seam, stitch around the flap sides and lower edge leaving the upper edge open. Clip the corners and turn the flap right side out; press. Topstitch ¼" from the side and lower edges.

**With right sides together** and the upper edges aligned, place one fused side piece along one body side edge. Stitch, stopping ⅝" from the side piece lower corner (1). Keep the needle in the fabric.

**Clip a scant ½"** into the body piece where the stitching ended (2). This allows the body fabric to pivot easier at the corner.

**Pivot the body fabric** to align the short edge of the side piece with the body raw edge; stitch to within ⅝" of the next corner (3).



**Clip and pivot** again to stitch the second side piece long edge to the body. Repeat to attach the second fused side piece to the body.

**Repeat** to attach the lining side pieces to the lining body.

**Wrong sides together**, fold the 6"-wide strap in half lengthwise. Press the fold. Unfold the strap and fold both long edges toward the center crease; press. Refold the strap, encasing the raw edges. Topstitch ¼" from each long edge.

**Center the flap** unsewn edge along the body upper edge with right sides together; baste. Pin the strap ends on the body back approximately 2" in from each side and at least 1" below where the flap attaches to the bag. Adjust the strap position so it fits comfortably.

Tuck under each strap raw end ½". Secure the strap to the bag by stitching a box shape on each end (4).

**Turn the lining inside out** and pin it to the body; align all the seams and raw edges.

Stitch, leaving a 5" opening along one edge for turning.

**Turn the bag right side out**; press. Slipstitch the opening closed. ≈



Shannon Mullen, author of *Sew Hip*, is the face of MIY. She's the Youth Development Coordinator for Husqvarna Viking, and is on a mission to spread creativity through sewing. She loves making trendy and fashionable projects that express her individuality. For more information, visit [makeitu.com](http://makeitu.com).